

A decorative graphic consisting of a series of small, grey, oval shapes arranged in a horizontal line, followed by three curved lines that sweep upwards and to the right.

**SCRIBE<sub>EC</sub>**

**LX1 Quick Connect Guide  
3704/3706 Series**

[www.mfdigital.com](http://www.mfdigital.com)

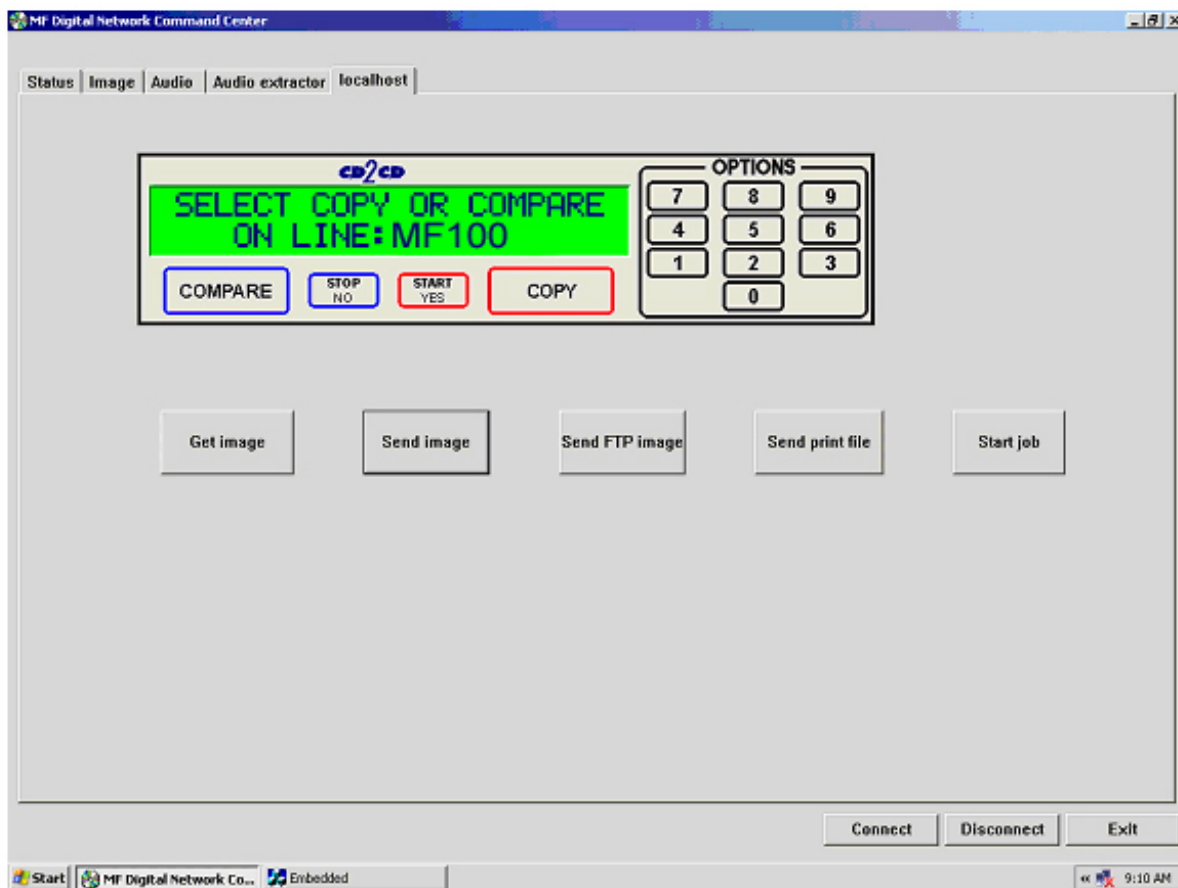
## Connection

Using a cross-over cable and ethernet ports from each machine, connect the LX1 to the MFDigital unit with the cross-over cable.



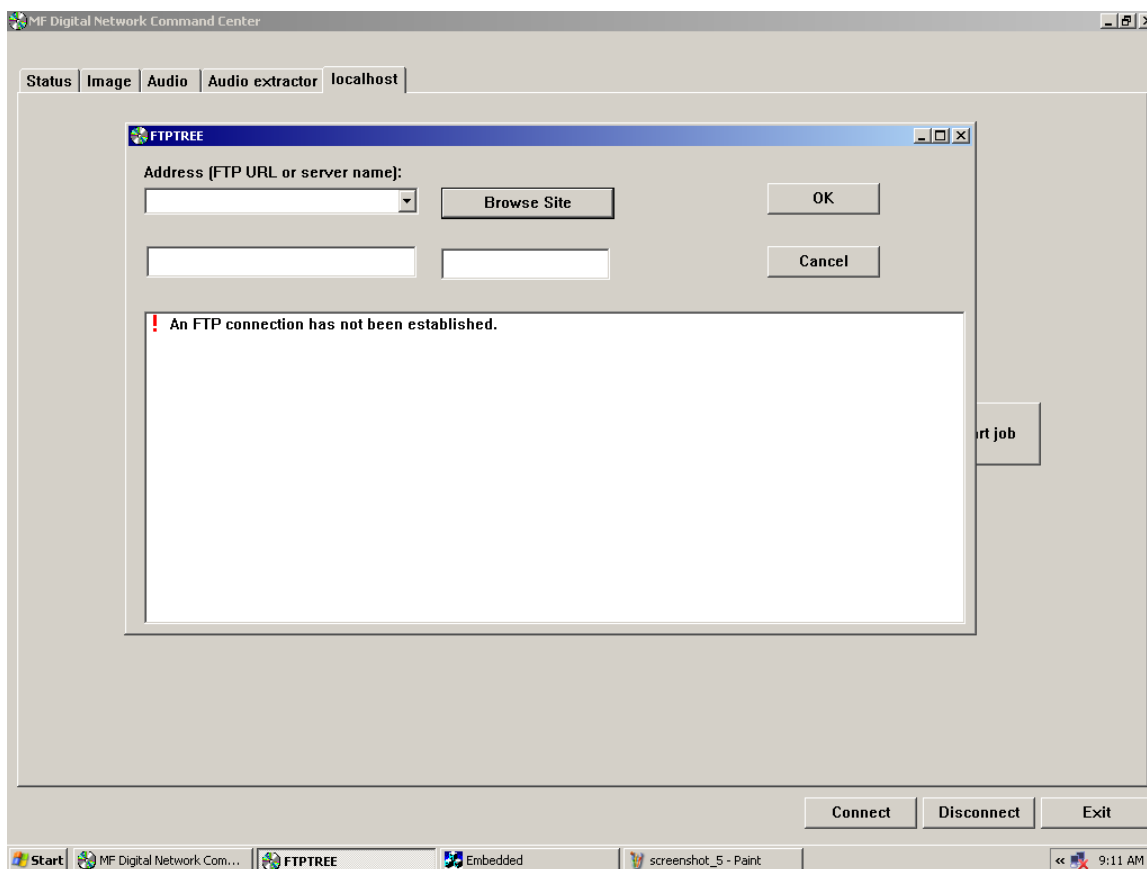
# Operation

1. Power up PRV-LX1 and MFDigital unit
2. Once MFD unit is powered up, click on "localhost



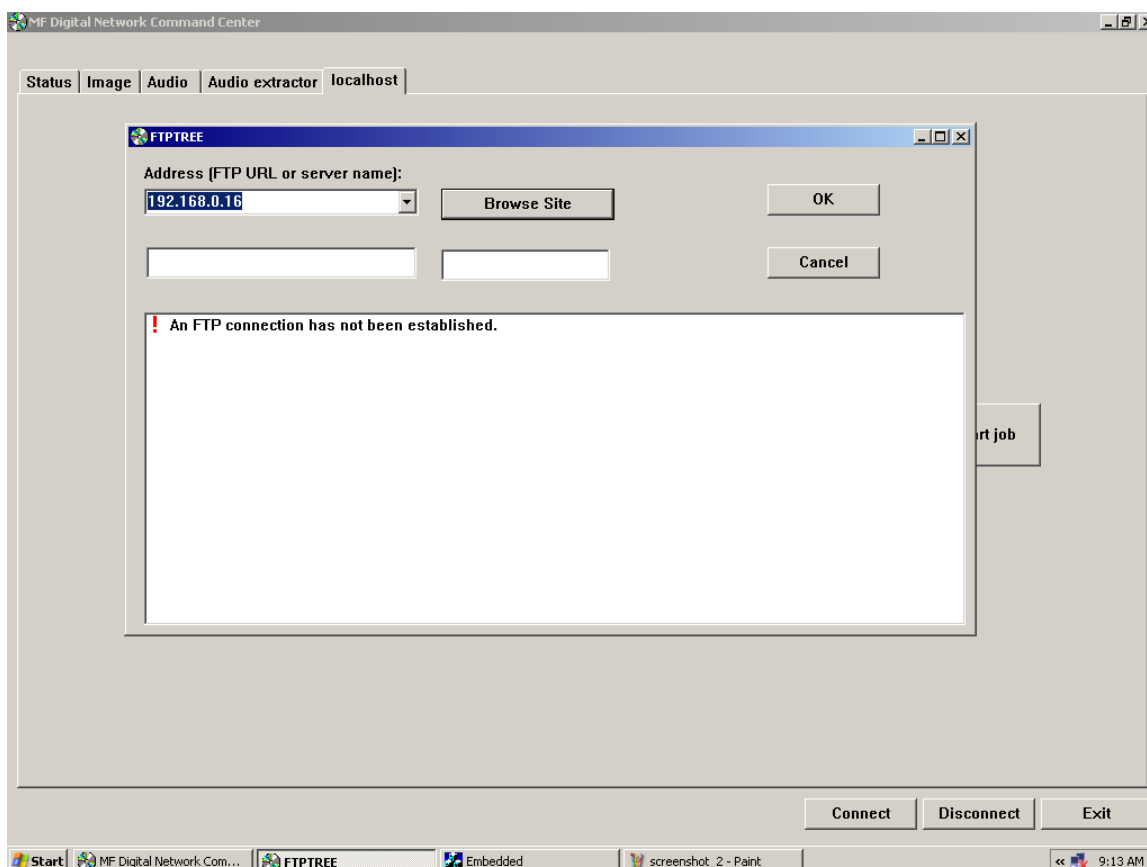
In "localhost" click "send FTP image"

The FTPTREE dialog box will pop up.

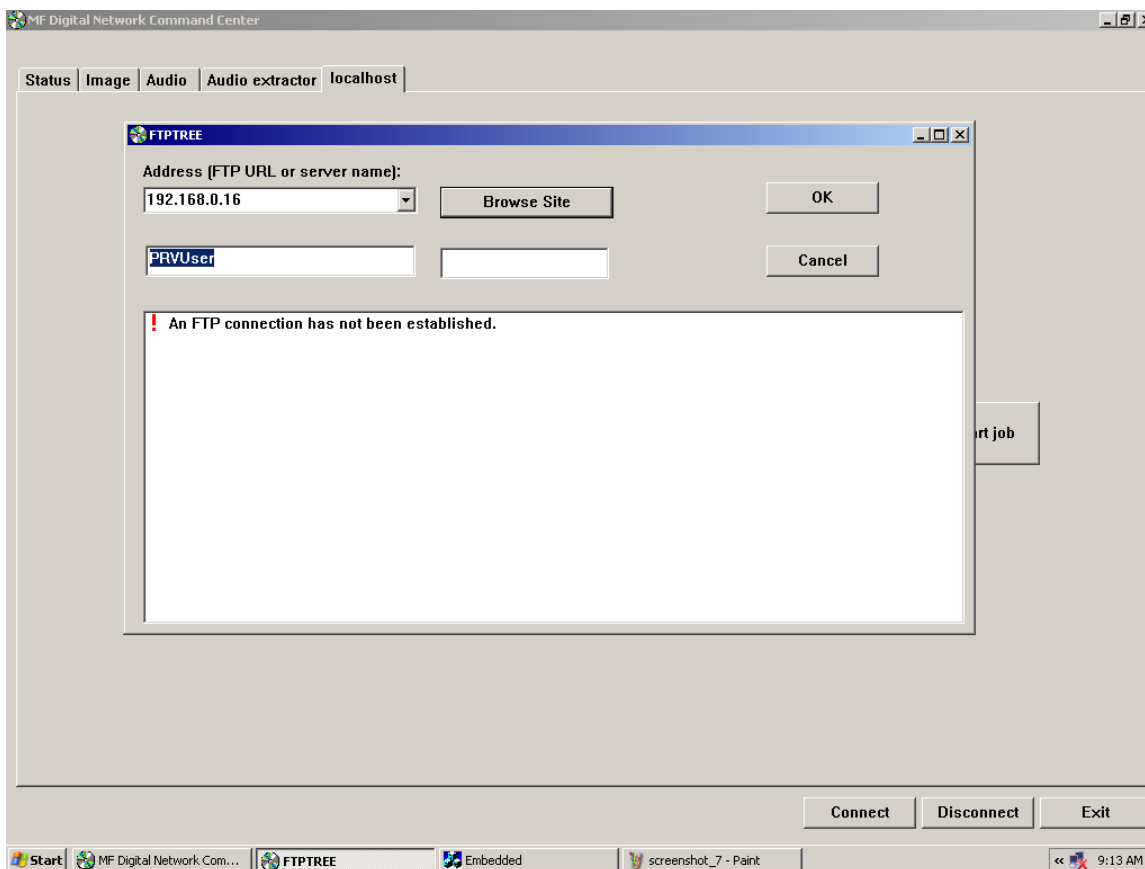


Here you enter the IP address, username and password of the LX1 unit

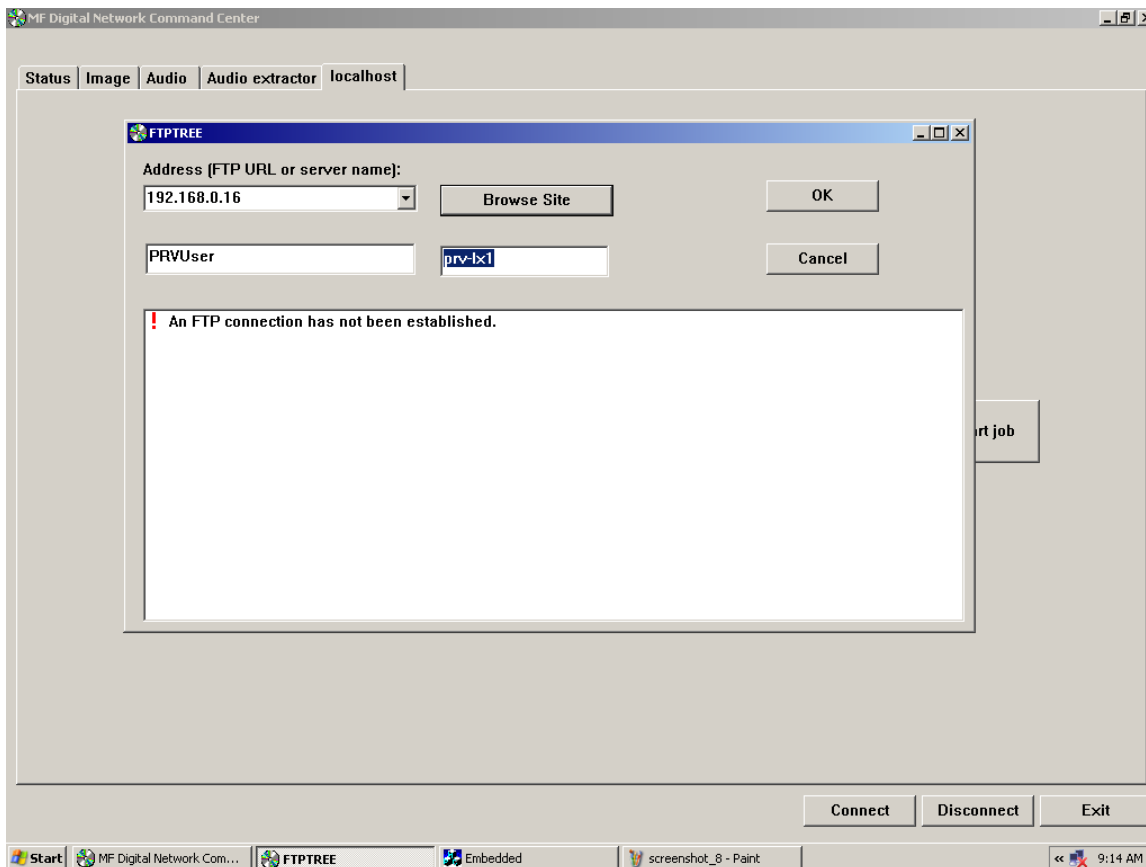
Enter the IP address of the LX1. The default IP address set by Pioneer is **192.168.0.16**



Enter the User Name for the LX1. The default User Name set by Pioneer is **PRVUser** [case sensitive]

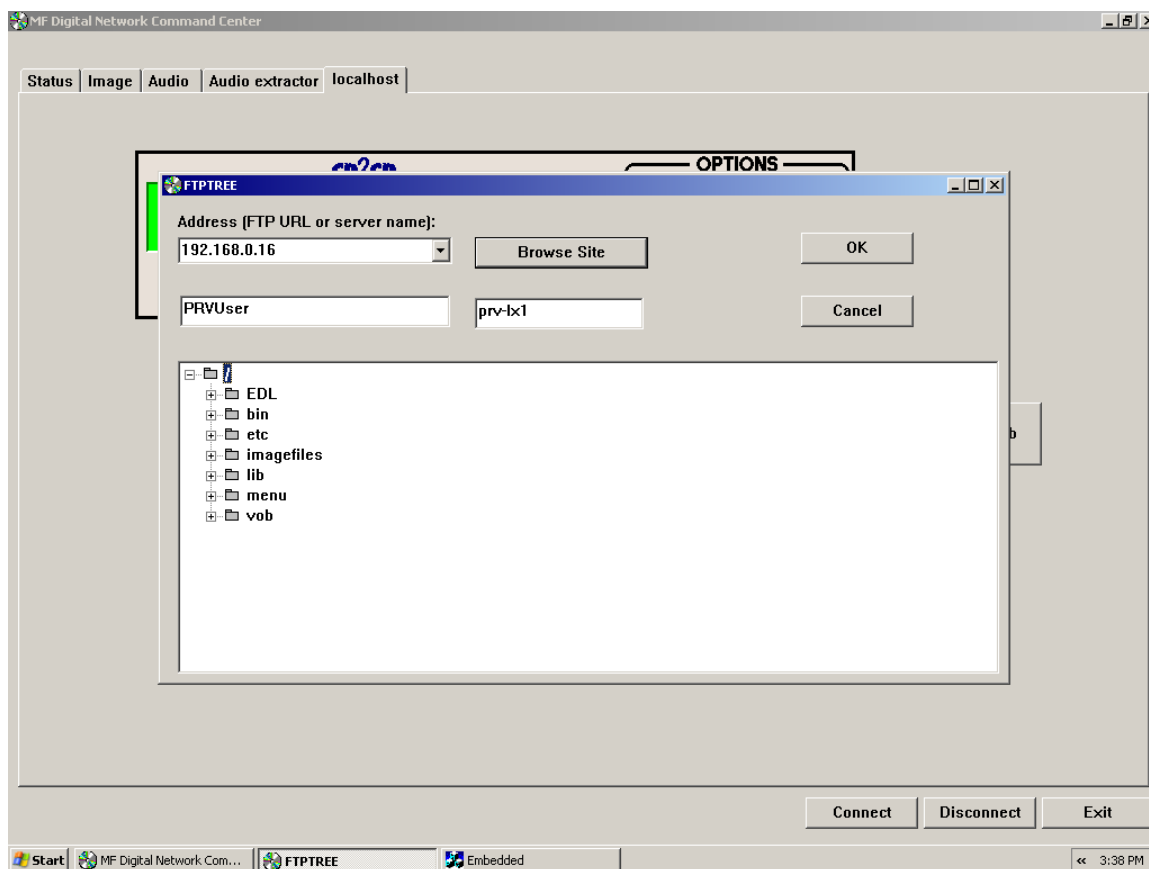


Enter the Password for the LX1. The default Password set by Pioneer is **prv-lx1**, [case sensitive]



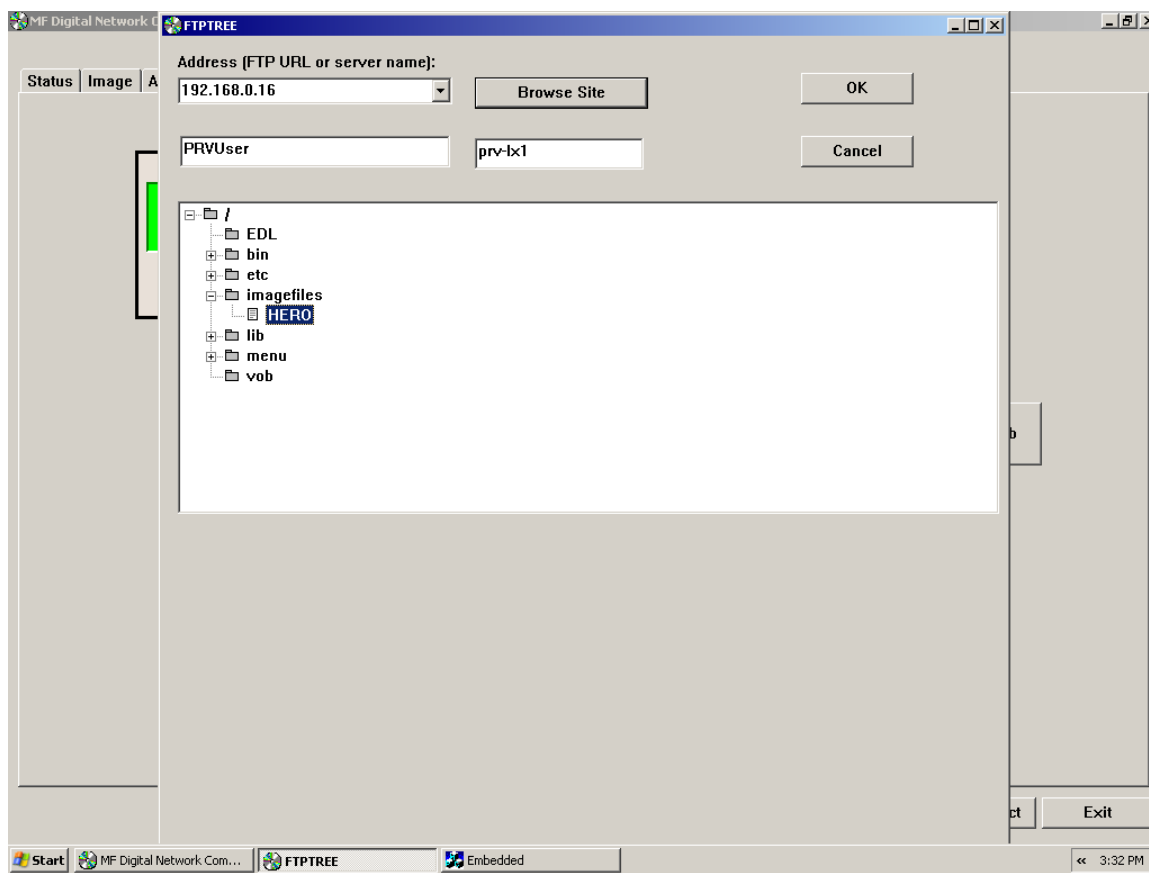
\*\*Note, the Pioneer factory settings can change, refer to the PRV-LX1 manual for IP Address, Username and Password configurations

Click "Browse Site" and the LX1 directory will appear



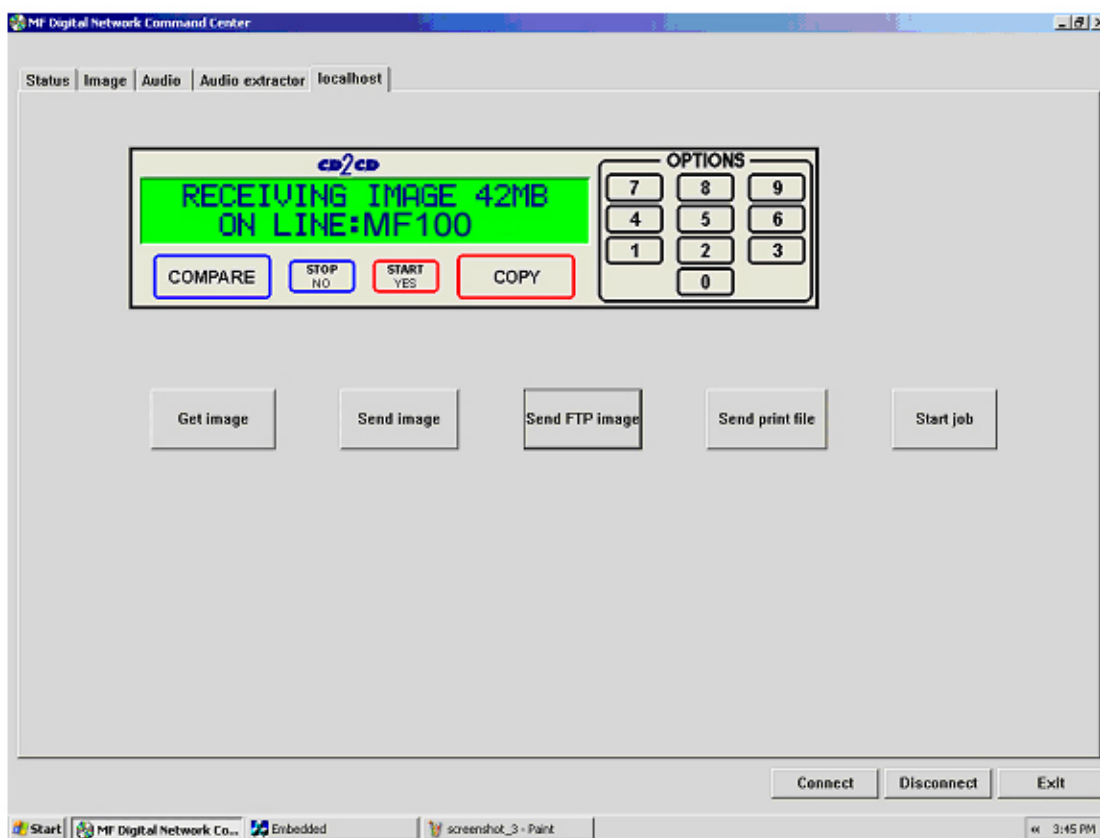


Click "imagefiles" on the PRV-LX1 directory to retrieve DVD image



Once the DVD image is selected/highlighted click "OK"

The FTPTREE dialog box will automatically close and the LCD simulation display will show "receiving image XXX MBs" on the "localhost" tab of the MF Digital software



This indicates the DVD image selected is now being transferred to the MF Digital unit.