



**Director EC Office Publisher with OptiEC PRO PRINTER
INSTALLATION GUIDE**

www.mfdigital.com



Table Of Contents

Subject	Page
Minimum System Requirements.....	3
Installing the Firewire Adapter & Software Identifiers.....	4
Installing the Driver for the DK1001-0107 Card.....	5
Making the Connection.....	6
Installing the Director EC Office Publisher Software	7
Installing the OptiEC PRO Printer Driver.....	8
Adjusting the OptiEC PRO Printer Driver Settings.....	10
Selecting system drives and the OptiEC PRO printer for the Director..	11
Turning OFF Auto RUN on a CD-ROM drive.....	12
Installing the Director EC Publisher Alignment Utility.....	13
Aligning the Drive Tower.....	14
Aligning the OptiEC PRO printer.....	15
Using the DClient Application.....	16
Troubleshooting Section.....	17



DIRECTOR EC OFFICE PUBLISHER WITH OptiEC PRO PRINTER INSTALLATION GUIDE

DIRECTOR EC OFFICE PUBLISHER -- PC MINIMUM REQUIREMENTS

- A Pentium® 4 or compatible personal computer @ 2 GHz or faster.
- Windows 2000 Professional (service pack 4.0 or higher) or Windows XP (service pack 1.0a or higher)
- 1GB RAM
- One (1) Hard Disk Controller Adaptec BRAND Ultra 29160
- One (1) 18 GB SCSI 15,000rpm Ultra 160 SCSI Hard Drive (formatted NTFS) as follows:
 - One (1) Basic Partition for System (C:)
 - Two (2) 9GB NTFS Partitions (D:)(E:) – Temp folder in root on each partition
- One (1) Free PCI slot
- One (1) internal USB port for the Software Identifier Card (DKI-011-0107)
- One (1) external USB port for OptiEC PRO printer
- One (1) PCI Firewire B Card, IEEE-1394B, (supplied by MF DIGITAL)
- One (1) DKI011-0107 (supplied by MF DIGITAL) PC needs a free 3.5" floppy drive power cable for DKI card.
- One (1) External COM port (COM1 or COM2)
- Network 10/100Mbs on Board
- Video 1024 x 768

THE DIRECTOR EC SOFTWARE MUST BE INSTALLED in "C:\" DIRECTORY

MF DIGITAL
121 Carolyn Blvd.
Farmingdale, NY 11735
001 631 249 9393
www.mfdigital.com

Installing the Firewire Adapter & Software Identifier Cards (DKI001-0107)

Note: You should never attempt to service a unit without ensuring proper anti-static protection. The use of a grounding strap, or other such grounding device, is advised. In addition, the internal configuration of your computer may be different from the computer pictured below.

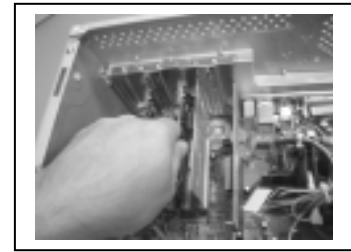
Installing the Firewire Card

The DirectorEC Office Publisher requires one IEEE-1394B card.

1. Shut down the PC.
2. Turn the PC's power off.
3. Unplug the PC's power cord.
4. Remove the PC's cover as indicated in the PC's manual.
5. Locate an empty PCI slot, as seen in **(fig.1)**.
6. Install the firewire adapter card **(fig. 2)**.



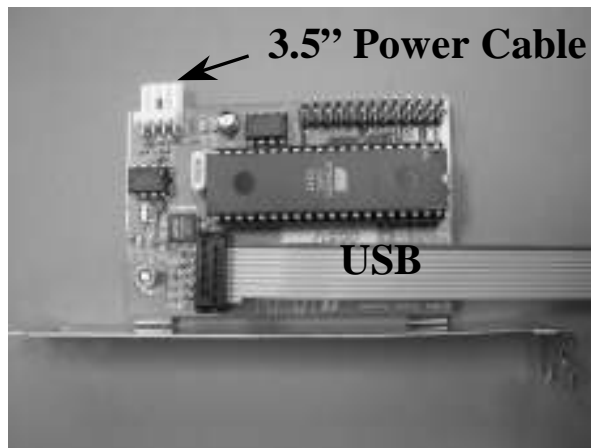
(fig. 1)



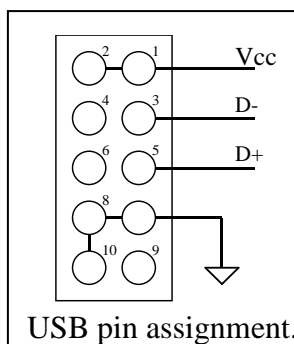
(fig. 2)

Installing the Software Identifier Card (DKI001-0107)

1. If your PC is not OFF, perform the Windows shutdown now.
2. Turn-off powers switch and unplug AC power from the wall.
3. If the PC's cover has been re-installed, remove it now.
4. Locate an empty slot to mount the Software Identifier Card **(fig. 3)**.
5. Connect the 3.5" floppy type power cable.
6. Using 9-pin ribbon, connect the card to an open internal USB on a PC motherboard.



(fig. 3)

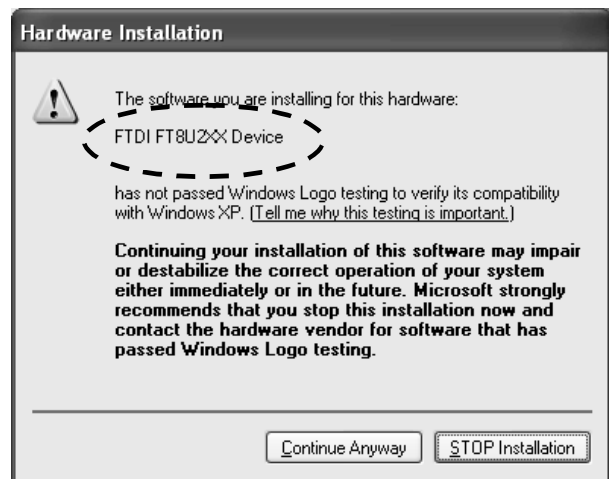


Installing the Driver for the Software Identifier Card (DKI001-0107)

1. Once the Software Identifier card is installed and PC is turned ON the “Found New Hardware Wizard” window will popup.
2. Insert the Director EC Publisher software CD in a CD-ROM then choose the “Install the software automatically (Recommended)” option and click *Next* (fig. 1).
3. Click on *Continue Anyway* on the next windows (fig. 2).
4. Driver files will be copied and installed on a host PC (fig. 3).
5. Click the *Finish* button on the final window (fig. 4).
6. Congratulations you have successfully installed the driver for the Software Identifier Card.



(fig. 1)



(fig. 2)



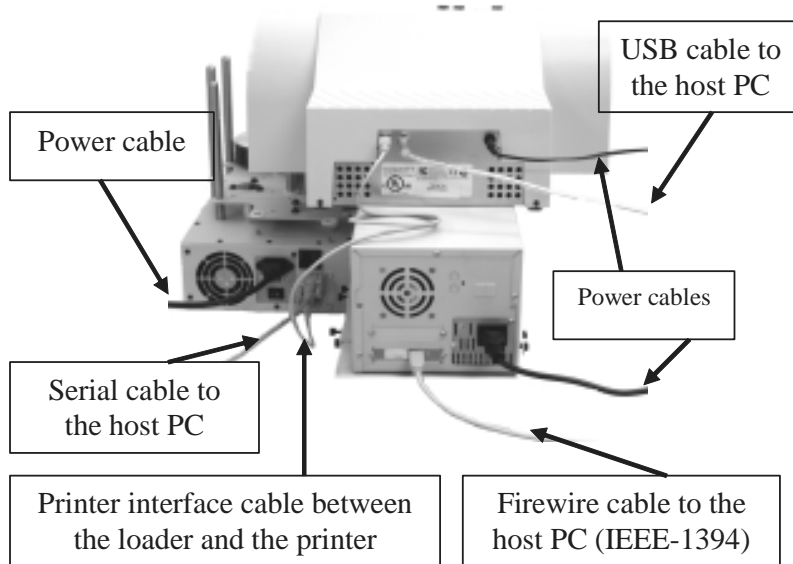
(fig. 4)



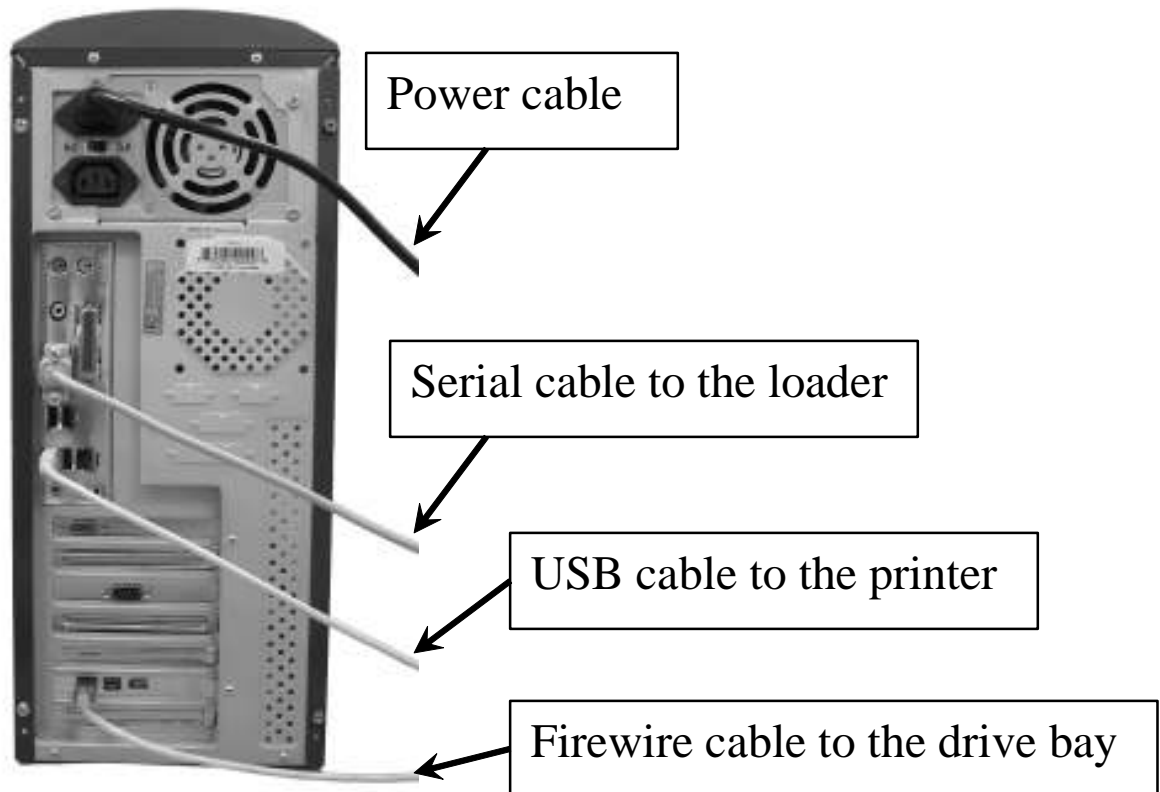
(fig. 3)

Making the Connection

1 & 2 Drive Systems have one firewire B cable connection (IEEE-1394B).



PC Connection



Installing the Director EC Office Publisher Software

Note:

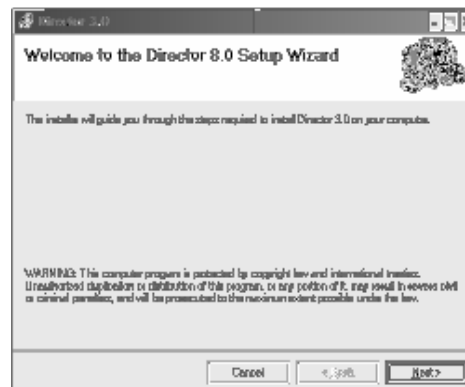
When installing the Director EC software on Windows XP system the “*ODBC FoxPro*” drivers **MUST** be installed. (step # 7)

1. Insert the Director EC Publisher software CD.
2. From the CD ROM drive of the computer, click *Director 3.0*
3. Click *Next* (**fig. 1**).
4. You **MUST** accept default folder and click *Next* (**fig. 2**).
5. Confirm Installation and click *Next* (**fig. 3**).
6. Installation completed click *Close* (**fig. 4**).

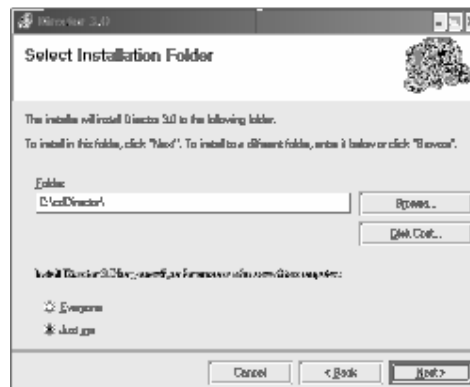
Note:

Before running Director 3.0 on a Windows XP system the “*ODBC FoxPro*” drivers **MUST be installed (step # 7)**

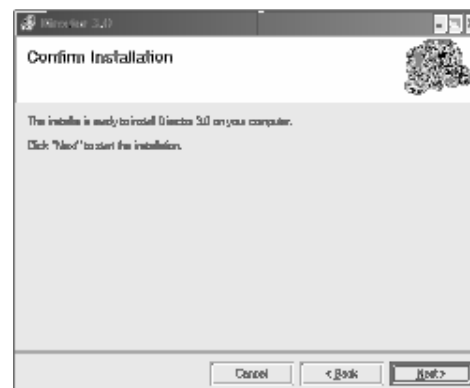
7. (*Windows XP systems ONLY*) After installation of the Director EC software Double click the *VFPODBC* file located on the Director EC Publisher software CD.
8. Congratulations you have successfully installed Director EC Office Publisher software.



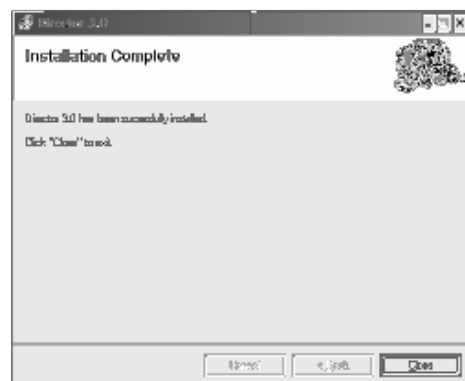
(fig. 1)



(fig. 2)



(fig. 3)



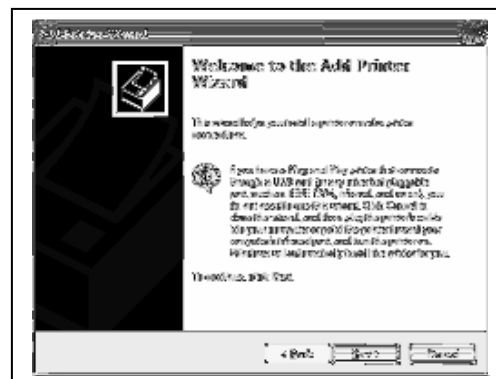
(fig. 4)

Installing the OptiEC PRO Printer Driver

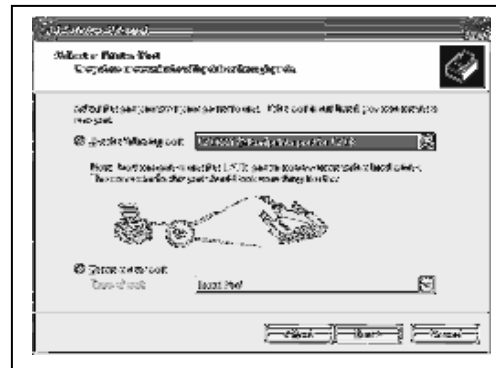
1. Click Start-> Settings-> Printers
2. Click Add New Printer
3. The “Welcome to the Add Printer Wizard” window will appear (**fig. 1**). Click *Next* button.
4. In the “Local or Network Printer” window, uncheck the “Automatically detect installed printer” option, leaving the “Local printer attached to computer” option (**fig. 2**) and click *Next* button.
5. In the “Select a Printer Port” window, select *USB001* port (**fig. 3**) then click *Next* button.
6. In the “Install Printer Software” window, click the “Have Disk” button (**fig. 4**). You will be then prompted to “Install from Disk”, click the “Browse” button (**fig. 5**). Browse the location of the printer driver on a CD (**fig. 6**).



(fig. 1)



(fig. 2)



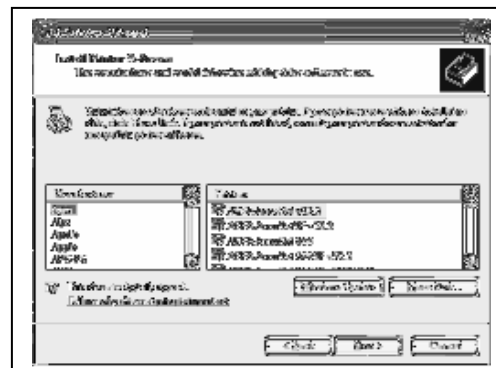
(fig. 3)



(fig. 5)



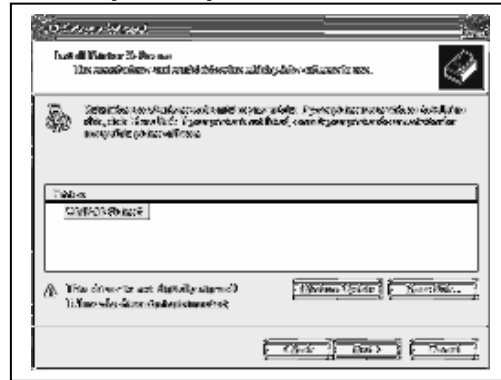
(fig. 6)



(fig. 4)

Installing the OptiEC PRO Printer Driver (cont.)

7. After specifying location of a driver for the OptiEC PRO printer, the printer “*CD/DVD Printer 6*” will appear in the “Add Printer Window” (fig. 7). Click Next to continue.
8. In the “Name your Printer” window, leave the printer as the default name, and select the printer to be the default printer name (fig. 8) and click Next.
9. In the “Printer Sharing” window, select “*Do Not Share the Printer*” (fig. 9) and click Next.
10. Choose *No* for “Print Test Page” (fig. 10) then click *Next*.
11. The “Completing the Add Printer Wizard” window will appear (fig. 11). Click *Finish*.
12. Click on *Continue Anyway* button to proceed (fig. 12).
13. You have now successfully installed the printer driver for OptiEC PRO printer.



(fig. 7)



(fig. 8)



(fig. 9)



(fig. 11)



(fig. 12)



(fig. 10)

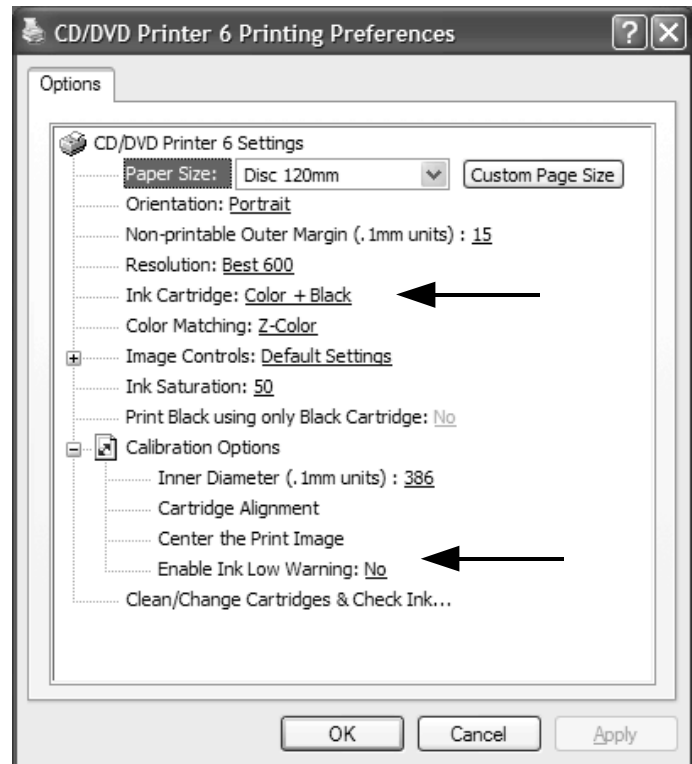
Adjusting the OptiEC PRO Printer Driver Settings

Printing Preferences

To change the printing preferences for the OptiEC PRO printer, please do the following:

1. Go to Start-> Settings -> Printers
2. Right-click on the CD/DVD Printer 6 in the Printers Folder
3. Go to Printing Preferences
4. For the Scribe Program to use the printer effectively, please match the settings of your printer driver to the example on the right-side of this page.
 - a. Ink Cartridge setting depends on installed cartridge.
5. To save settings, click Apply and OK to exit.

*****NOTE: Any changes made to the printer driver settings, require a NEW PRN file to be made. If you change one of the settings, be sure to create a NEW PRN file.*****

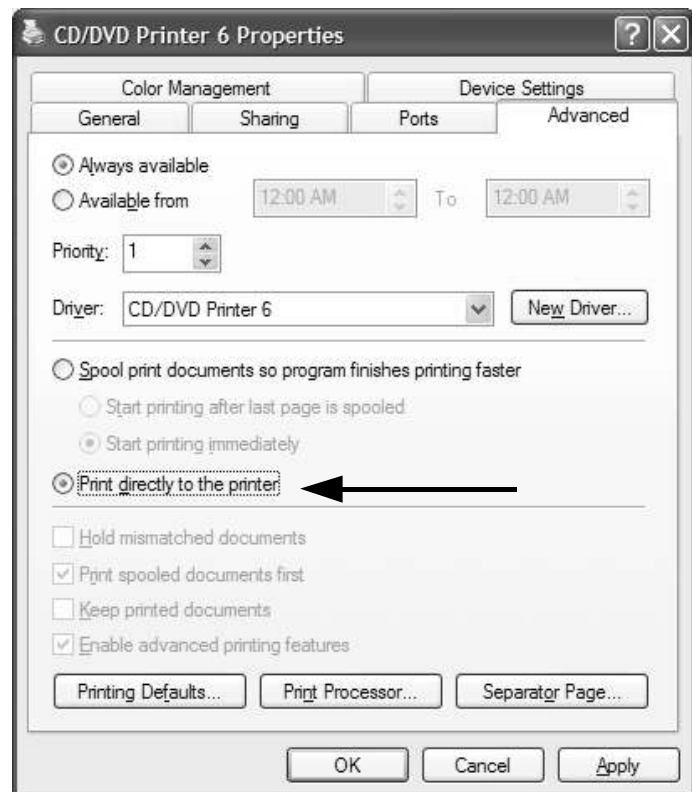


Printer Spooling

It is important to disable printer spooling on the OptiEC PRO printer. To do so, please follow the steps below:

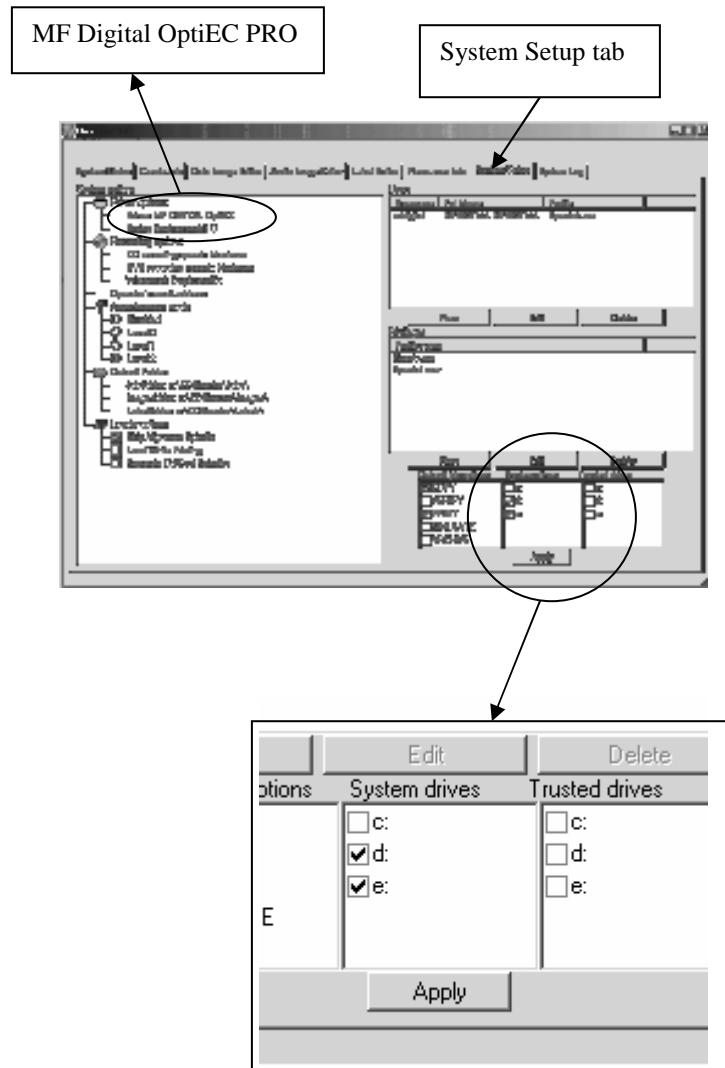
1. Go to Start-> Settings -> Printers
2. Right-click on the CD/DVD Printer 6 printer in the Printers Folder
3. Go to Properties
4. Go to the Advanced Tab
5. For the Scribe Program to use the printer effectively, please match the settings of your printer driver to the example on the right-side of this page.
6. To save settings, Click Apply and OK to exit.

*****NOTE: Any changes made to the printer driver settings, require a NEW PRN file to be made. If you change one of the settings, be sure to create a NEW PRN file.*****



Selecting system drives and OptiEC PRO printer for Director EC

1. Execute the Director EC 3.00 program.
2. When the Director EC software is executed for the first time it might prompt the “*System Drives Missing*” message. Click *OK* to proceed.
3. Next, go to “*System Setup*” tab and select system drives “*D and E*” Depending on systems configuration system drive letters might differ. (fig. 1)
4. Select the *MF Digital OptiEC PRO* printer.
5. Make sure the *Skip Alignment Spindle* option is checked.
6. Finally, click the *Apply* button and restart the Director EC program.



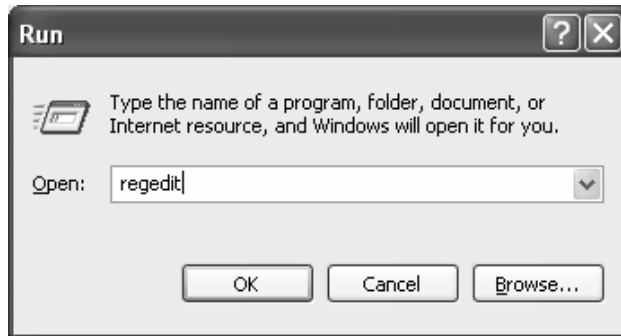
(fig. 1)

Note:

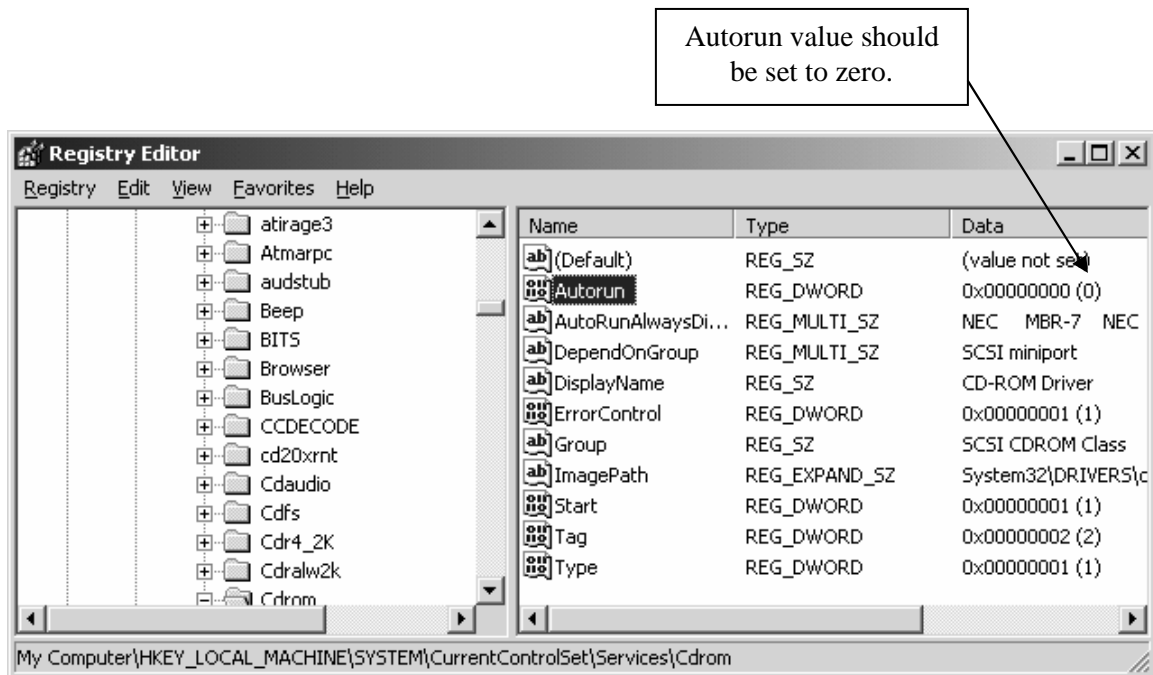
Do not select drive C: as a system drive

Turning OFF Auto RUN on a CD-ROM drive.

1. Go to “Start”.
2. Go to “Run”
3. Type in “*regedit*” then click **OK** (**fig.1**)
4. Navigate to “Autorun” registry following the path
MyComputer\HKEY_LOCAL_MACHINE\SYSTEM\CurrentControlSet\Services\Cdrom
(**fig. 2**)
5. Set value in “Autorun” registry to zero if different.



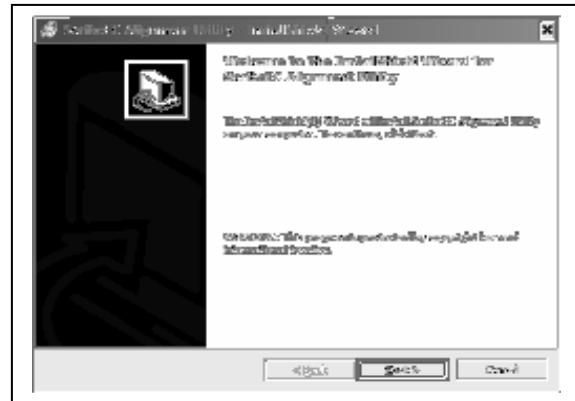
(fig. 1)



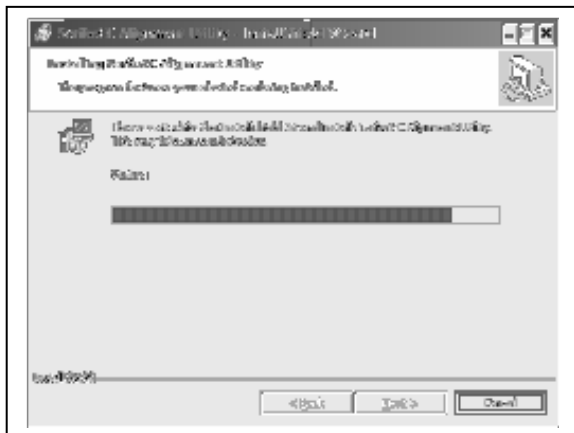
(fig. 2)

Installing the Director EC Publisher Alignment Utility for aligning the Drive Tower and Printer

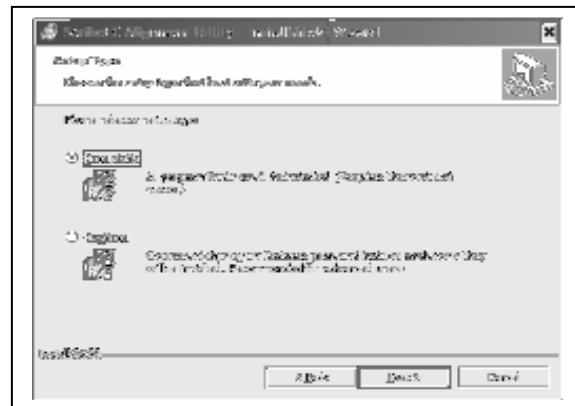
1. Insert the Director EC Office Publisher CD into the CD-ROM drive of your PC.
2. Click on **Alignment Utility setup.exe** and Click **OK** (fig. 1).
3. Click **Next** button to install complete version (fig. 2).
4. Click **Install** to start installation (fig. 3)
5. A progress bar will appear (fig. 4).
6. Click **Finish** to complete installation (fig. 5)



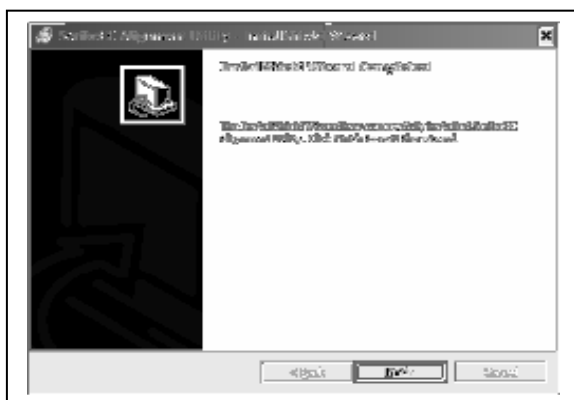
(fig. 1)



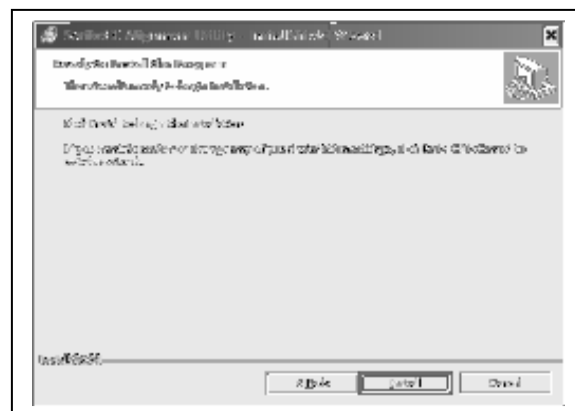
(fig. 4)



(fig. 2)



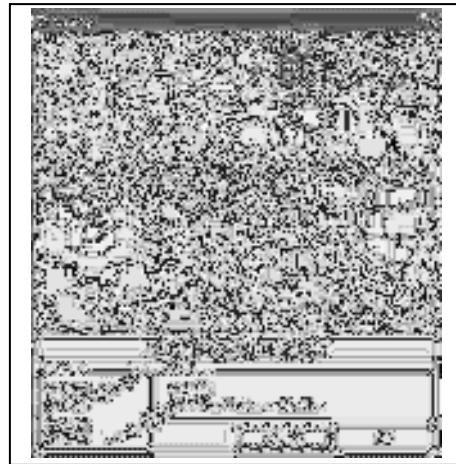
(fig. 5)



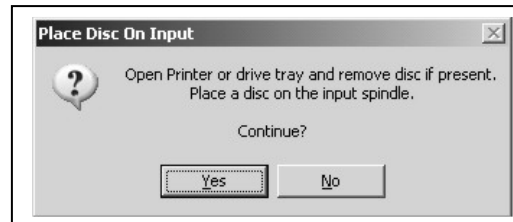
(fig. 3)

Aligning the Drive Tower

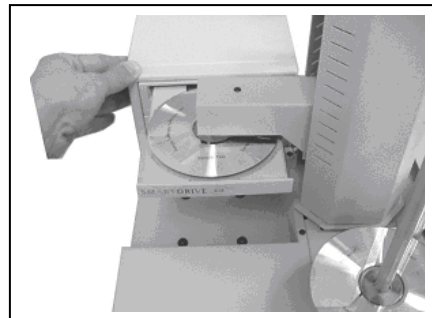
1. From your Start Menu Open the *SCRIBE EC Alignment Utility* (fig. 1). It will be located in the folder designated when you installed the alignment utility. Choose the appropriate COM Port which the Scribe EC loader is installed on. Then choose the “*All other printer types or drive’s bay*” and click the *Start Test* button (fig. 1).
2. Follow the onscreen instructions by opening the top CD/DVD drive tray, and clicking the *Yes* button (fig. 2). The picker arm will hover the disc over the drive tray, observe the discs position and make the appropriate adjustments to the drive tower (fig. 3).
3. Click the *Yes* button when you are satisfied with your adjustment (fig. 4).
4. The picker arm will then place the disc onto the drive tray. Follow the on screen instructions and click the *OK* button (fig. 5).
5. Once you are satisfied with the drive tower alignment, tighten the thumb-screws located on **both** sides of the drive tower (fig. 6).



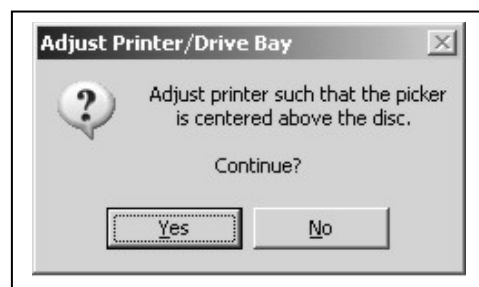
(fig. 1)



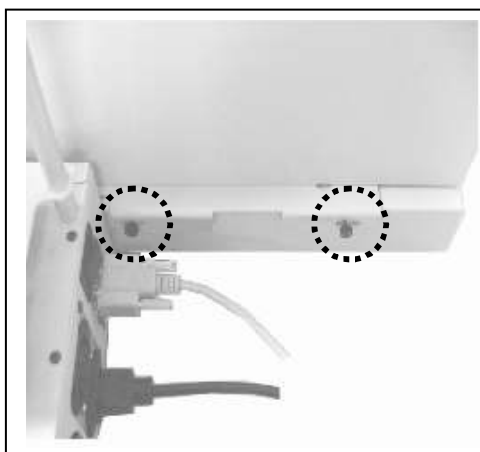
(fig. 2)



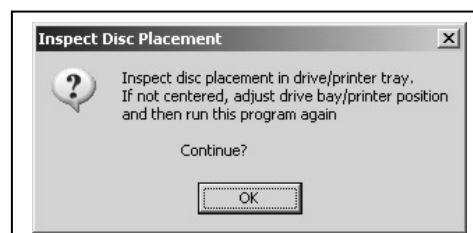
(fig. 3)



(fig. 4)



(fig. 6)



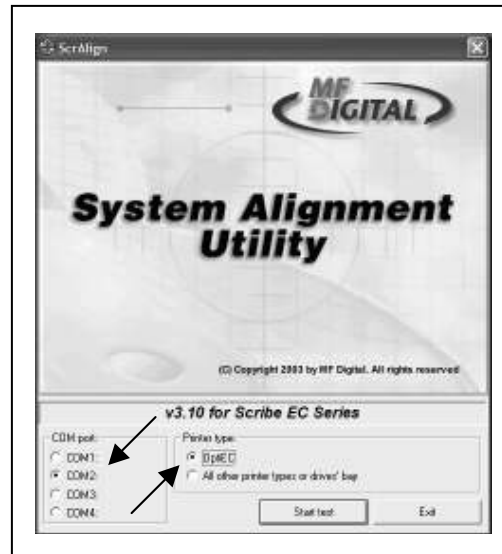
(fig. 5)

Aligning the OptiEC PRO Printer

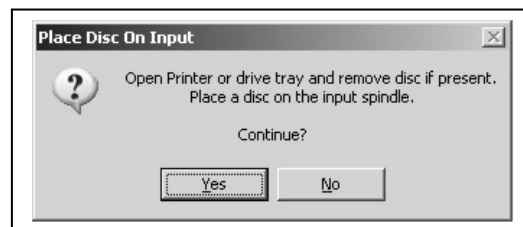
Alert:

Before starting the Alignment Utility, position the back end of the inkjet printer in line with the dotted line on the top of the drive bay.

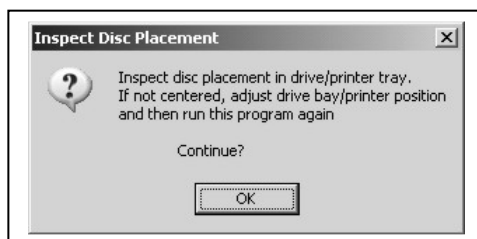
1. From the Start Menu Open the *SCRIBE EC Alignment Utility*. It will be located in the folder designated when you installed the alignment utility. Choose the appropriate COM Port Number, which the Scribe EC Loader is connected on. Then choose the *OptiEC* and click the *Start Test* button (fig. 1).
2. Follow the onscreen instructions then click the *Yes* button (fig. 2). The picker arm will then hover the disc over the open printer tray. Observe disc's position and make the appropriate adjustments to the printer (fig. 3).
3. Click the *Yes* button when you are satisfied with your adjustment (fig. 4).
4. The picker arm will then place the disc onto the printer tray. Follow the on screen instructions and click the *OK* button (fig. 5).
5. Once you are satisfied with the printer's alignment, tighten the thumbscrews located on **both** side of the printer (fig. 6).



(fig. 1)



(fig. 2)



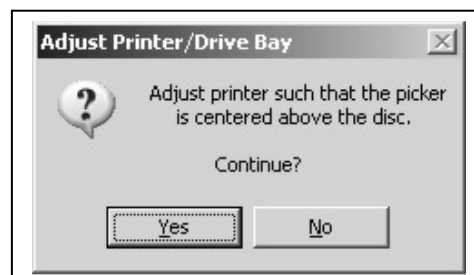
(fig. 5)



(fig. 3)



(fig. 6)



(fig. 4)

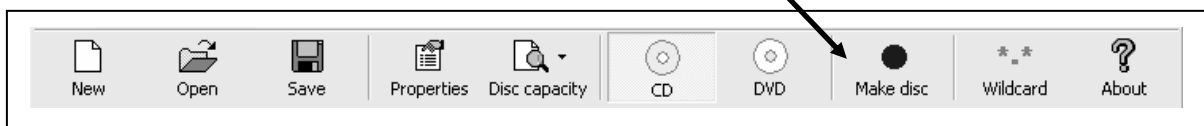
Using the DClient Application to submit a job request from the local PC to the DirectorEC

NOTE: It is **not** required to install the DirectorEC Office Publisher Software on each networked PC but does require the Dclient.exe file to be copied onto each local PC on the network.

After installing the DirectorEC Office Publisher Software (page 5) copy the DClient.exe application to the PCs on the local network. The DClient.exe file is located at *C:/cdDirector/DClient/DClient.exe*

Submitting a Job request

- Execute the DClient application.
- Create an image using the *Data Image Editor* tab or load an existing IMG file.
- Create a label using the *Label Editor* tab or load an existing PRN file.
- Click the *Make disc* icon at the *Data Image Editor* toolbar.



The popup window will now show the *Connect to server* where a job can be submitted for production. The *Connect to server* window requires DirectorEC's host PC information.

Server address: is the IP address of the DirectorEC's host PC.

User name: User's name submitting a job.

Password: User's password.

Image: Image to be submitted.

Label: Image to be submitted.

JobID: Any name describing a job.

Quantity: Number of discs to be produced.

Press **OK** to submit a job.



Note: ***The cdDirector program **MUST** be running on the host PC for the DClient application to be able send a job request ***



Troubleshooting

1. Director EC program failed to initialize.

- a. Check if the Software Identifier Card (DKI011-0107) is installed correctly (*page # 4*).
- b. Check the power connection to the Software Identifier Card (*page # 4*).
- c. Check if the Software Identifier Card's driver is installed correctly (*page # 5*).

2. Director EC program did not recognize the loader.

- a. Check the power cable on the back of a Director EC loader.
- b. Make sure the power switch on the power supply of the loader is in the ON position (the I is pressed in).
- c. Make sure the power switch on Director EC loader is turned ON.
- d. Check the serial cable (RS232) connection between the Director EC loader and the host PC (*page #6*).

3. The Director EC fails to execute the jobs.

- a. Check the **Resource Info** tab in the cdDirector software for the list of drives recognized by the cdDirector software.
- b. The drives are not recognized by the Director software; go to the next step # 4.
- c. Wrong printer is selected in the **System Setup** tab (*page # 11*).
- d. The printer's status is **Offline**. Make sure the power to the printer is turned ON, the printer is connected to the host PC and the printer's status is **Ready**.

4. The Director EC program did not recognize any drives.

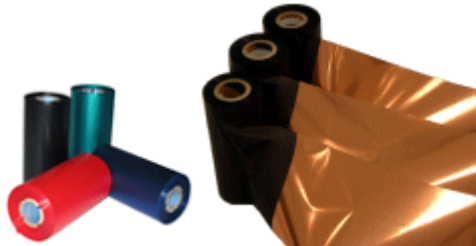
- a. Press the eject button on the drive to check for power.
- b. Check the power cable connection on the back of the drive bay.
- c. Turn the power button on the drive bay. The power button is located on the front of the tower.
- d. Check the firewire cable connection between the drive bay and the host PC.
- e. Check the Device Manager for the **IEEE-1394 Bus host** controllers which is the firewire PCI controller card installed in the host PC.
- f. Check if the Windows operating system recognized the drives by going to My Computer or Device Manager. Windows operating system must initialize the drives prior to executing the cdDirector program

5. Director EC program did not recognize the OptiEC PRO printer.

- a. Make sure power to the printer is turned ON.
- b. Make sure the Director EC program is set for **MF Digital OptiEC PRO** printer (*page # 11*).
- c. Check the USB printer cable connection between the printer and the host PC (*page # 6*).
- d. Check the **printer interface cable** connection between the printer and the Director EC loader (*page # 6*).

Genuine MF Digital Consumables

Thermal Printer Supplies



Thermal CD/DVD Printer Ribbons The Gold Standard

Part#	Product Description
CDP-PRN-BK	750' Black Ribbon for Prism Plus (Fine Line Print)
CDP-PRN-BLK	850' Black Ribbon for Spectrum 2 Printers
CDP-PRN-RED	656' Red Ribbon for Prism Plus & Spectrum 2 Printers
CDP-PRN-BLUE	656' Blue Ribbon for Prism Plus & Spectrum 2 Printers
CDP-PRN-GRN	656' Green Ribbon for Prism Plus & Spectrum 2 Printers
CDP-PRN-MULTI	656' Multi Ribbon for Prism Plus

Ink Jet Printer Supplies



Inkjet CD/DVD Printer Cartridges

Part#	Product Description
CDP-OPTI-EC-C	Color Ink Cartridge for OptiEC Inkjet Printer
CDP-OPTI-EC-CX	Large Color Ink Cartridge for OptiEC Inkjet Printer
CDP-OPTI-EC-BLK	Black Ink Cartridge for OptiEC Inkjet Printer
CDP-SIG4IC-BLK	Black Ink Cartridge for Sig IV, Sig Pro, & OptiEC PRO Printers
CDP-SIG4IC-C	Color Ink Cartridge for Signature IV Inkjet Printer ONLY
CDP-SIGPROIC-C	Color Ink Cartridge for Sig Pro & OptiEC PRO Printers
CDP-OPTI-EC-PROC-C	Photo Ink Cartridge for OptiEC PRO Printer ONLY

www.mfdigital.com