

P-55 Printer Setup

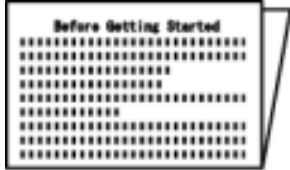

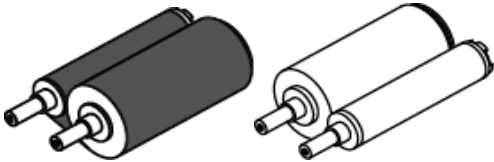

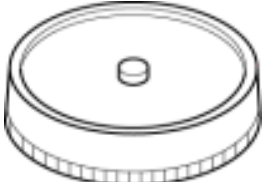


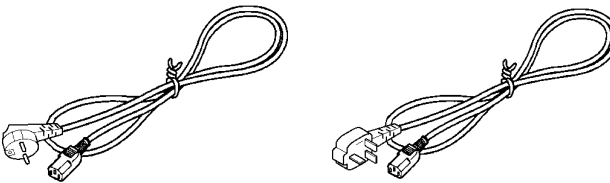


P-55 SETUP GUIDE



Unpacking and Inspection

The packing-case contains the following items, as well as the P-55 itself. Please make certain that all the items are present.

Accessories for P-55	
<p>"Before Getting Started" x1</p> 	<p>Utility Software CD-ROM x1 (including Operation Manual, Printer Driver and Disc Label Editor)</p>  <p>Printed by P-55 (PHOTO)</p>
<p>Ribbon set x1 (Set of ink ribbon and re-transfer ribbon)</p> 	<p>Label print sample printed by P-55</p>  <p>Printed by P-55 (COLOR)</p>
<p>Blank media (CD-R) 10-pack of discs x1</p> 	<p>Printer cable x1, USB cable x1</p> 
AC power cable	
<p>(For U.S.A. and Canada)</p> 	<p>(For Europe)</p> 

Unpacking and Inspection

To prevent the product from being damaged in shipment, cushioning materials and fixing metal are used to secure the internal parts to the unit. Make sure all those protection materials are removed before use. For the future shipment, keep the fixing metal and packing (3 types) in the packaging box along with packing materials.

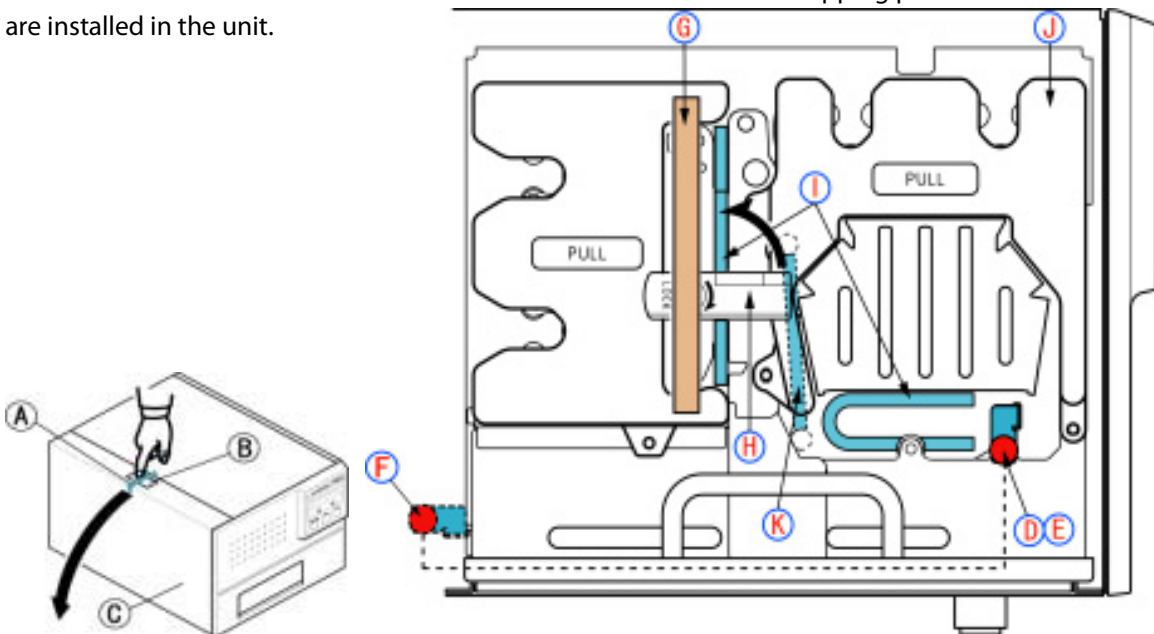
To prevent the product from being damaged in shipment, install the shipping protection materials in reverse order to the removal procedure.



The P-55 is a precision machine. Be careful not to drop or subject the unit to severe impact (it weighs more than 22 kg).

This product internally reaches a high temperature when in use. Before installing the shipping materials in the unit, leave it turned off for a while (1 hour) to cool it off completely.

Make sure the ink ribbon and transfer ribbon are removed when the shipping protection materials are installed in the unit.

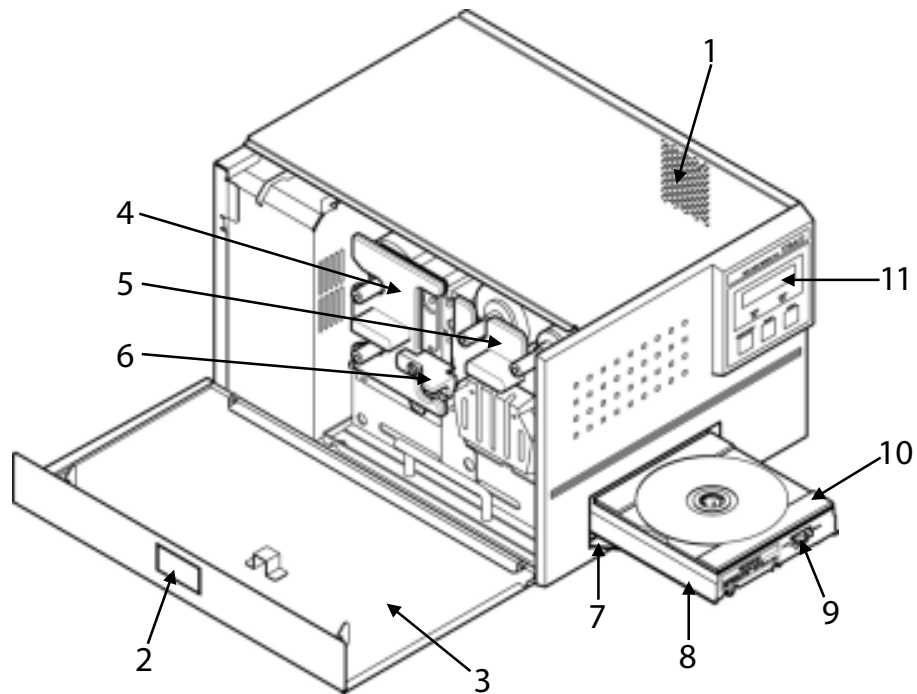


1. Peel off adhesive tape A from the top left of the unit and press unlock button B to open side door C.
2. Loosen the screw D and pull out the metallic bar E. Insert the removed metallic bar into position marked F to keep it for future use.
3. Peel off adhesive tape G, flip up lock lever H to unlock the ribbon cartridge and remove two cushions I by pulling them toward you.
4. Pull out ribbon cartridge J, remove cushion K and then put back the ribbon cartridge to its place for the moment.
5. Flip down lock lever H to lock the ribbon cartridge in place and lift up the side door until it locks.



Do not try to forcibly close the side door without flipping down the lock lever, or the side door may be damaged.

Identifying the Parts



1 Exhaust Fan (on the right side)

This is an air outlet for dropping the temperature inside the unit. Do not let foreign objects get in through this opening, or the results may be damage to the unit and could hazardous to the operator. Place the unit in an adequate location.

2 Side Door Unlocking Button

Pressing this button opens the side door. The side door is locked when the unit is turned on

3 Side Door

You need to open this door when changing ink cartridges.
Keep this door closed when the unit is functioning.

4 Ink Ribbon Cartridge

This is a cartridge for ink ribbon.

(As shipped from the factory, the cartridge does not contain ink ribbon.)

5 Re-transfer Ribbon Cartridge

This is a cartridge for re-transfer ribbon.

(As shipped from the factory, the cartridge does not contain re-transfer ribbon.)

6 Lock Lever

This is for locking the ribbon cartridge in place.

7 Tray Door

The tray slides out. Do not place any objects in front of this door.

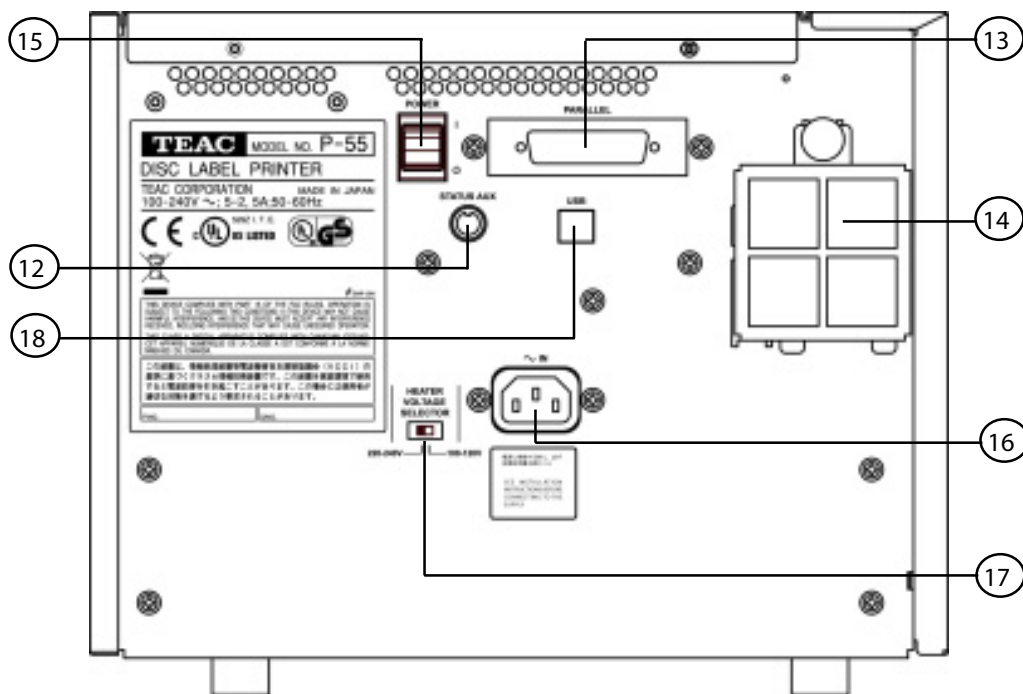
8 Tray


9 Tray Adapter Lock Switch

10 Tray Adapter

11 Control Panel

Identifying the Parts



- 12 STATUS AUX Connector (optional)
This connector allows connection of the P-55 to an external device for the combined use with the robotics system.
*Please contact us before use.
- 13 Parallel Port Multi-connector
This provides a parallel interface between your PC's printer port and the P-55 over the supplied printer cable.
- 14 Intake Fan (with filter)
This opening is for dropping the temperature inside the unit. Obstructing this opening may result in failures. Place the unit in an adequate location.
- 15 Power Switch
This rocker switch turns power to the unit on and off.
end of the switch, and powers down when pressing "  " end.
(The internal cooling fan stops only in about 10-20 minutes after the unit switches into the Standby ode.)
- 16 AC Power Input Socket
Plug in here the power cable. (To drop the tem perature inside the unit, the fan continues to rotate for about 10 to 20 minutes after switching off the power. For this interval of time, do not unplug the power cable.)

Connections .

- 17 Heater Voltage Selector Switch
This selects the voltage to supply to the internal heater.
For U.S.A. and Canada
The Heater Voltage Selector Switch is preset to "100-120V" at the factory.
Selecting a wrong voltage may cause the printer to malfunction.
For Europe
The Heater Voltage Selector Switch is preset to "220-240V" at the factory.
Selecting a wrong voltage may cause the printer to malfunction.
- 18 USB 2.0 Compatible Connector (Hi-Speed support)

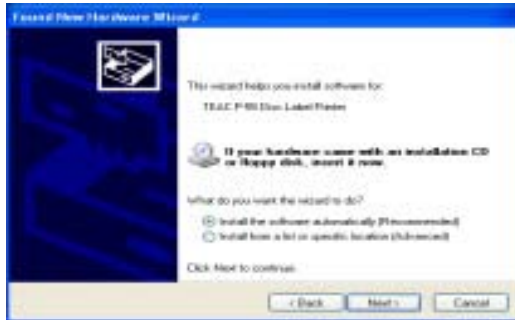
SECTION 10 : Installing the Printer Driver

If both the PC and P-55 are on before installing the driver, turn off the PC first and then the P-55,
Then, turn on the P-55 first and then the PC again.

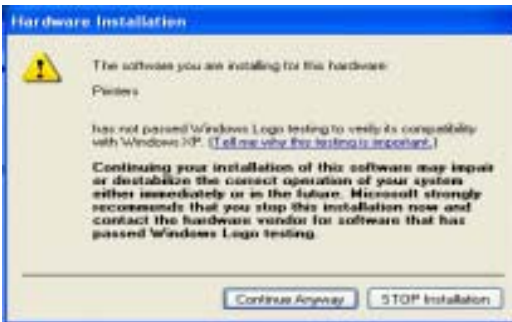


The window Found New Hardware Wizard appears on the screen.

If you are asked, "Can Windows connect to Windows update to search for software?" select No, not at this time and then click Next .



Select Install the software automatically (Recommended) and click Next .



The window Hardware Installation appears on the screen. Click Continue Anyway .



The window Please wait while the wizard installs the software appears on the screen. Wait until the window appears indicating the wizard is completed.



SECTION 10 : Installing the Printer Driver



The message indicates the software has been installed successfully. Click **Finish** .

*In Windows, click **Start** , select **Printers and Faxes** , and make sure the icon representing TEAC P-55 Disc Label Printer is displayed on the screen.

To restart the computer, in Windows, click **Start** and then **Shut Down** . Select **Restart** from the pull-down menu, and click **OK** .

NOTE

[Printer driver operation modes]

The P-55 printer driver has the two modes.

1. [Standard Mode]

Allows the P-55 to print when the P-55 is online or connected to your Windows computer.

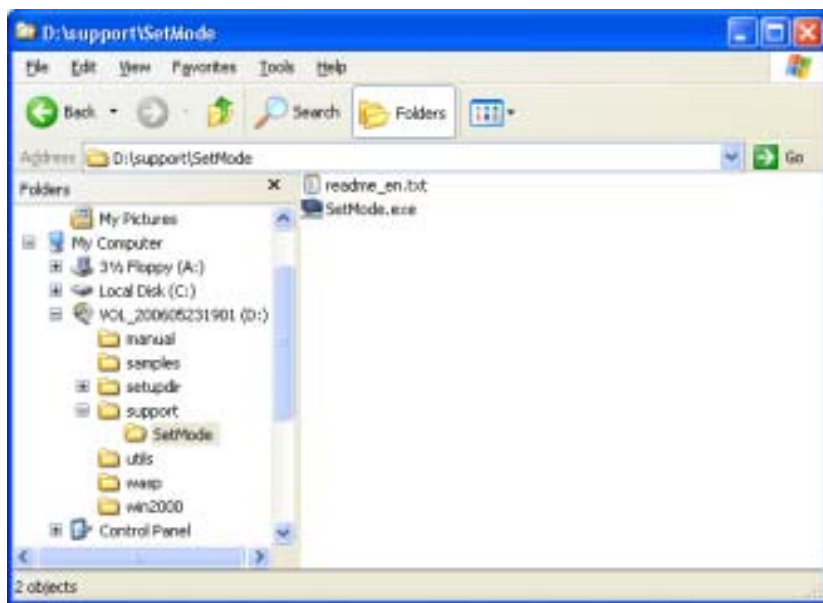
The computer communicates with the P-55 to obtain the information such as ribbon type, remaining ribbon amount and operation status.

2. [Remote Mode]

Allows the P-55 to create PRN files (*Note1) when the P-55 is offline or not connected to your Windows computer.

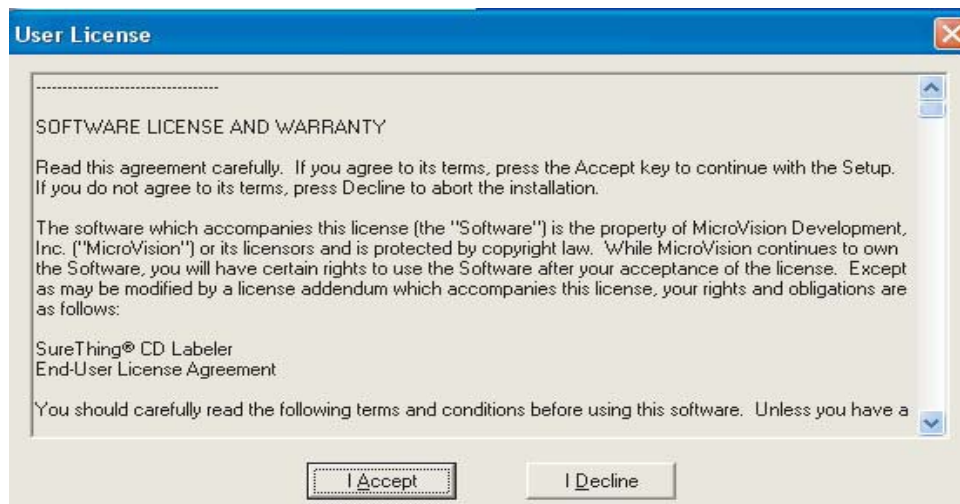
You need to specify the ribbon type you want to use in Printing Preferences as the P-55 does not communicate directly with your PC for the information.

To switch the P-55 printer driver between standard mode and remote mode, execute the application tool setmode.exe. To locate the tool, double-click the icon for the attached CD-ROM "P-55 UTILITY SOFTWARE" to open. Double-click the folder "Support" and then "SetMode."



When The P-55 and Duplicator Are Purchased Together
The SureThing Software Is Pre-Installed At The Factory*
*2000 & 9000 Series Only

1. Place CD in Drive. Installation will start automatically.



2. Click "I Accept" to the licensing and warranty information.



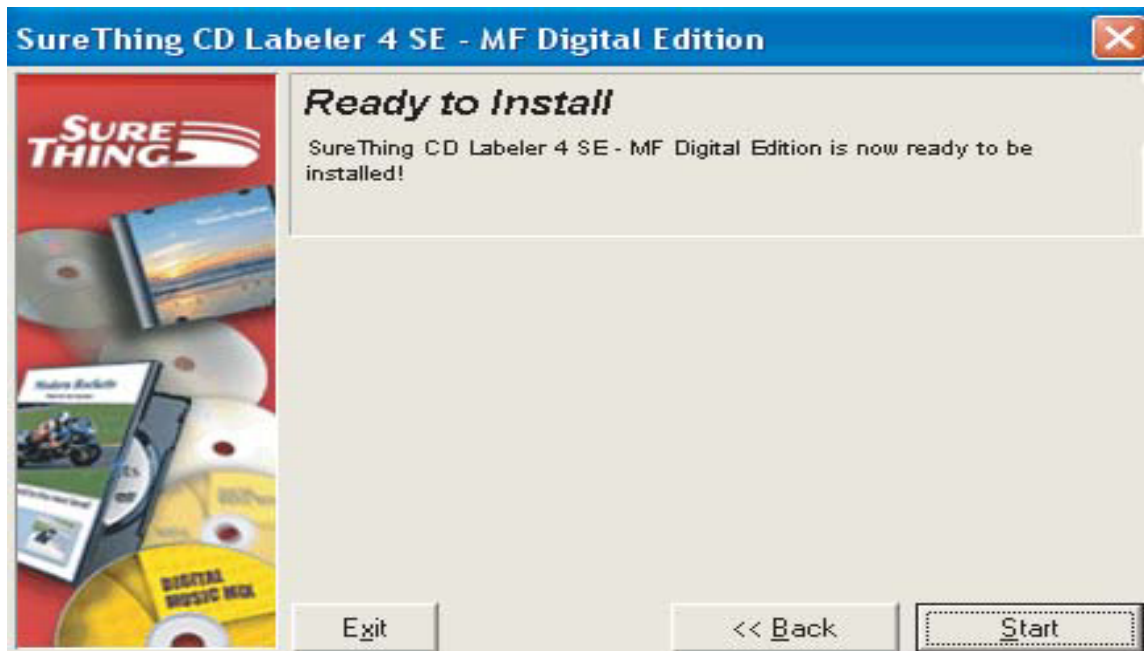
3. Click "Next" to begin software installation.



4. Click "Next" to add a shortcut to your desktop and start menu.



5. Click "Next" to Complete the software installation.



6. When installation is complete, click "Finish" to exit, and Double Click the Sure Thing icon on your desktop.



Important Notes



Note:

The maximum resolution for a .STD file is 600 dpi. If print image exceeds 600 dpi, a .PRN file must be used.



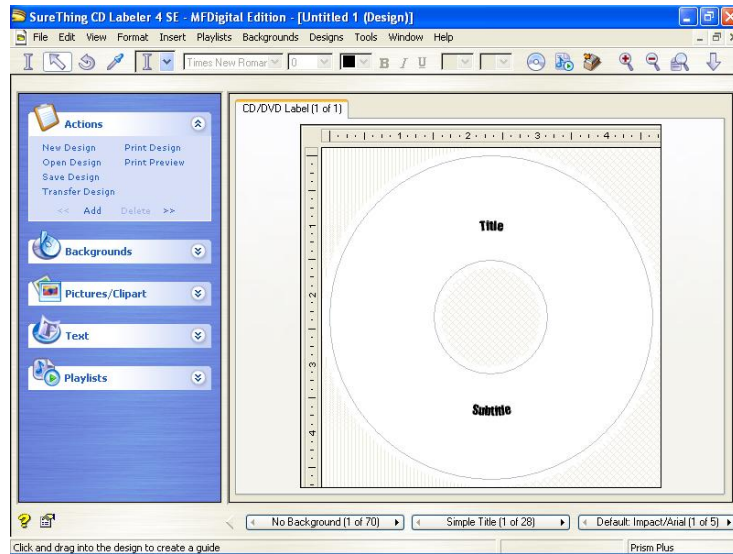
Note:

When submitting the PDF file to print, please make sure the Default printer is the P-55.
(For Example If printing to P55 - P55 must be the default printer)

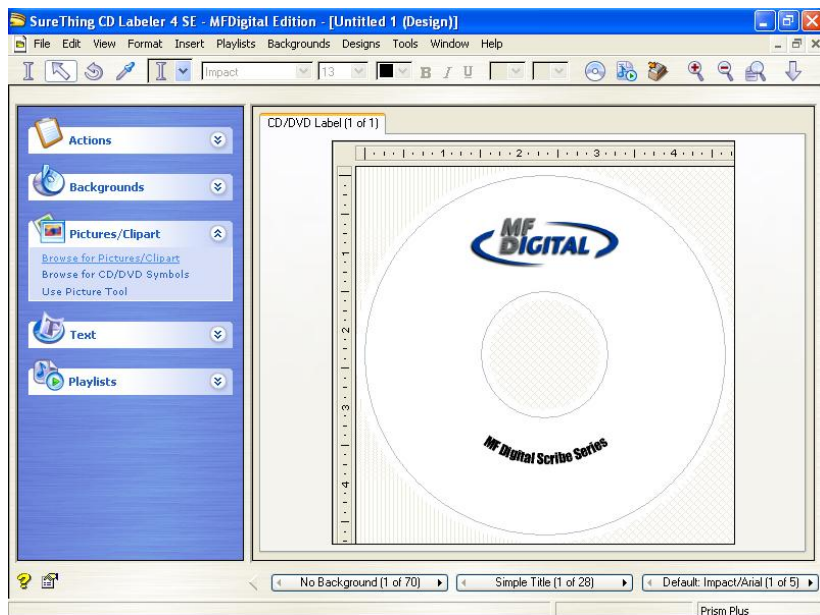
Any Questions Please Contact
Technical Support
631 249-9393 ext 310

Creating an STD file

1. Open SureThing CD Label Software as shown in Fig. 1.



2. Add text and images to your label.



3. Save the STD file that you just created and you are ready to go!

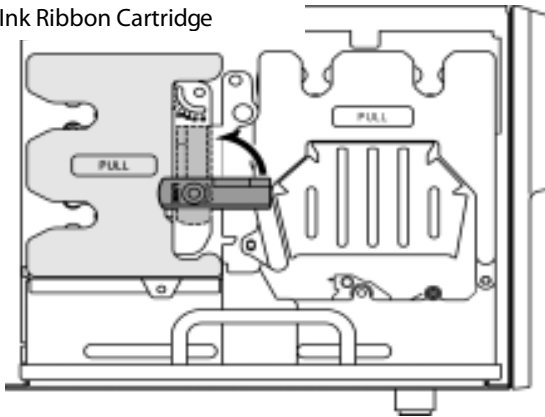
Note:

For information on creating .PRN files, Please see your user manual. The user manual is located on the User Manual CD that came with your MF Digital Duplicator.

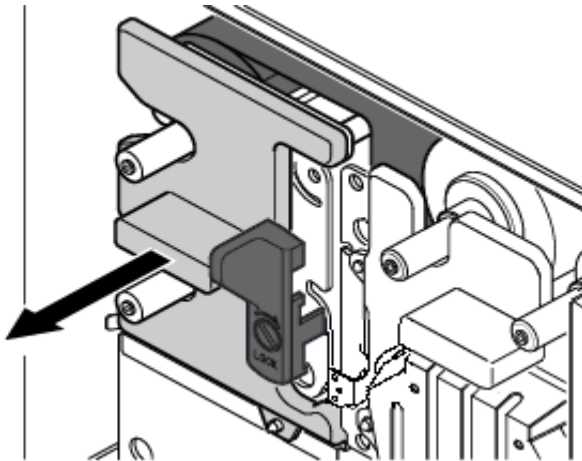
Loading Ribbons

2. Loading Ink Ribbon

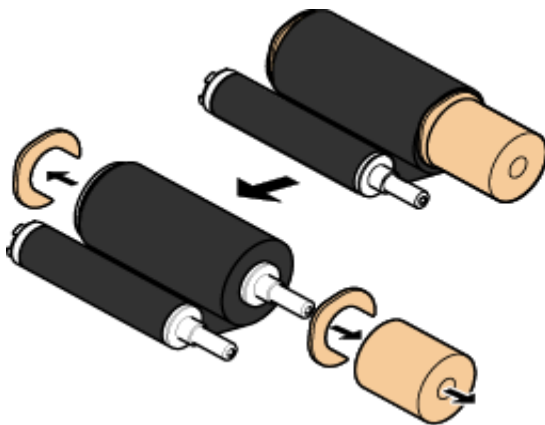
Ink Ribbon Cartridge



- 1) Flip up the lock lever that holds the Ink ribbon cartridge in place.



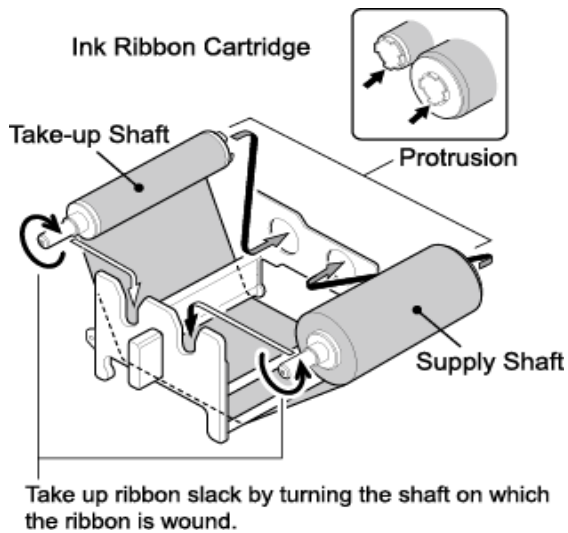
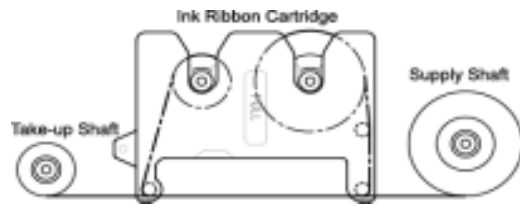
- 2) Take out the ink ribbon cartridge by Pulling it toward you.



- 3) Take the ink ribbon out from the package And remove all the pads from the ribbon as Shown on the left.

*Ribbon specifications and appearance Are subject to Change for Improvement without notice.

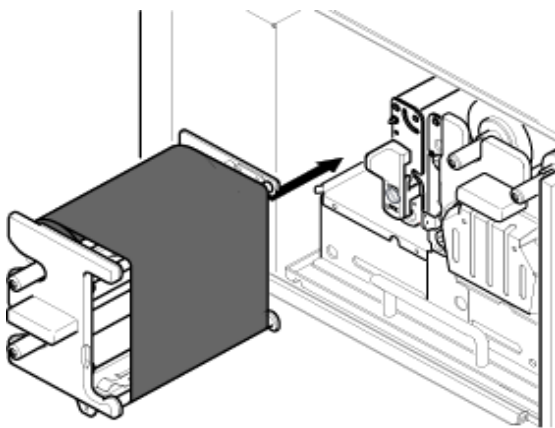
Loading Ribbons



- 4) Place the ink ribbon with the take-up shaft on the left and the supply shaft on the right, and their protrusions facing you and their openings facing away from you.
- 5) Insert the open end of the take-up shaft into the hole provided in the cartridge (for ease of work, we recommend holding the shaft by inserting your index finger into its open end), and snap the protrusion at the other end of the shaft into the cut-off in the cartridge.
- 6) In a similar way, put the supply shaft into the ink ribbon cartridge.
- 7) Turn the take-up shaft clockwise to take up ribbon slack.

NOTE

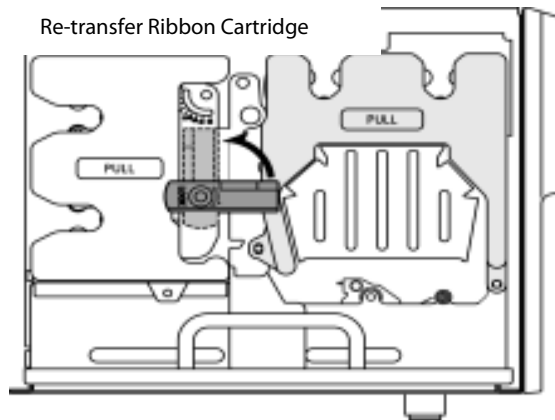
If you perform the next step without taking up ribbon slack, there is a chance that the ribbon might be broken.



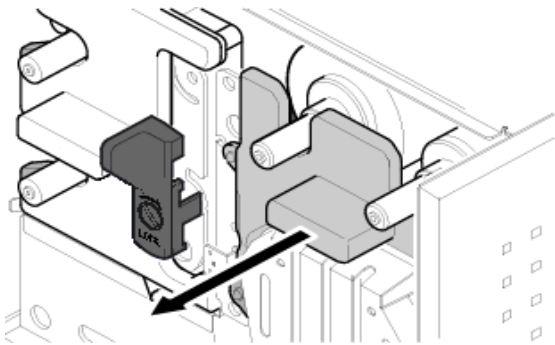
- 8) Mount the ink ribbon cartridge in the P-55 itself.

When mounting the ribbon cartridge, push it directly and slowly. If you try to force it in slantwise, there is a chance that the ribbon might be broken. If the ribbon clogs somewhere, take out the cartridge, take up ribbon slack again, and slowly re-insert the cartridge.

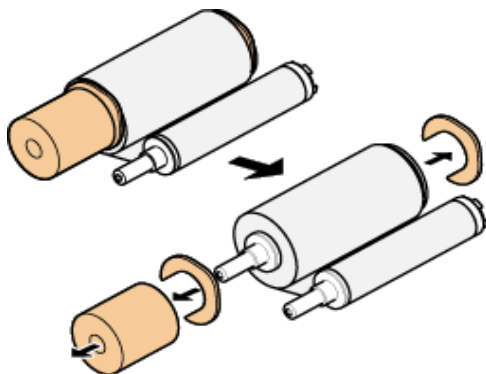
3. Loading Re-transfer Ribbon



- 1) Flip up the lock lever that holds the re-transfer ribbon cartridge in place.



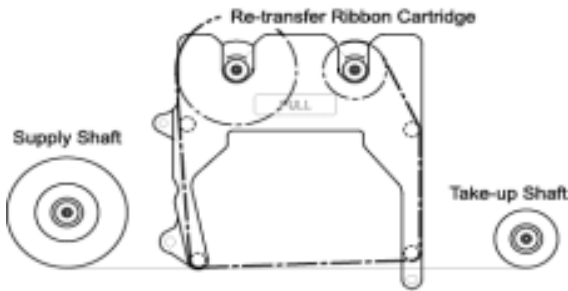
- 2) Take out the re-transfer ribbon cartridge by pulling it toward you



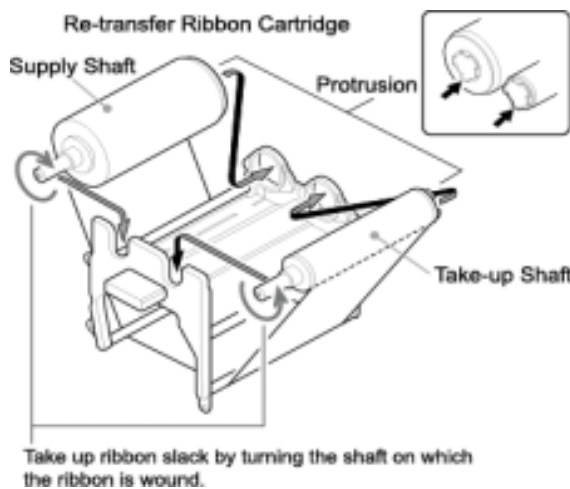
- 3) Take the transfer ribbon out from the package and remove all the pads from the ribbon as shown on the left.

*Ribbon specifications and appearance are subject to change for improvement without notice.

Loading Ribbons



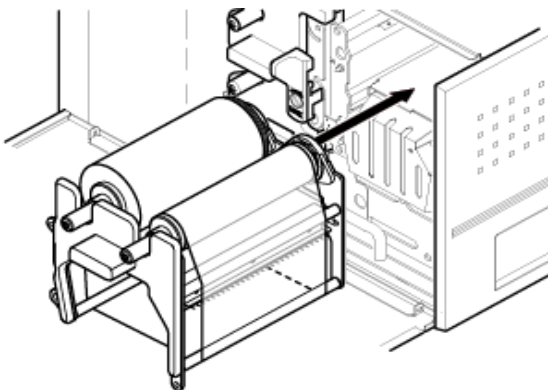
- 4) Place the re-transfer ribbon with the supply shaft on the left and the take-up shaft on the right, and their protrusions facing you and their openings facing away from you.



- 5) Insert the open end of the take-up shaft into the hole provided in the cartridge (for ease of work, we recommend holding the shaft by inserting your index finger into its open end), and snap the protrusion at the other end of the shaft into the cut-off in the cartridge.
- 6) In a similar way, put the supply shaft into the re-transfer ribbon cartridge.
- 7) Turn the take-up shaft clockwise to take up ribbon slack.

NOTE

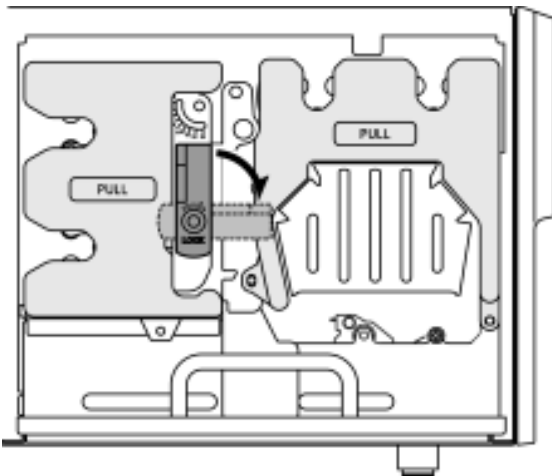
If you perform the next step without taking up ribbon slack, there is a chance that the ribbon might be broken.



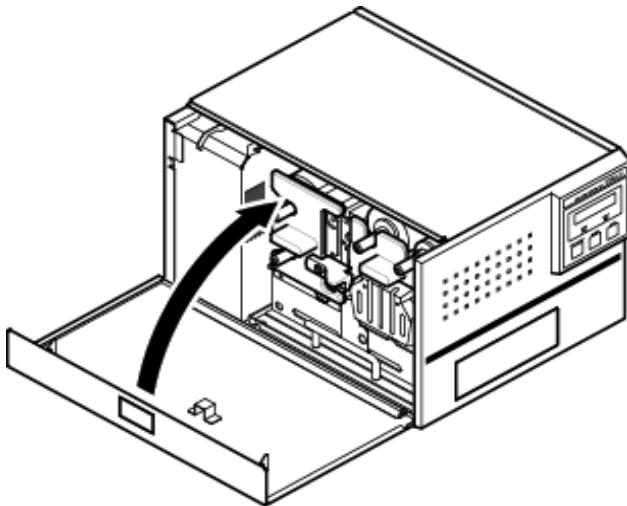
- 8) Mount the re-transfer ribbon cartridge in the P-55 itself.

When mounting the ribbon cartridge, push it directly and slowly. If you try to force it in slantwise, there is a chance that the ribbon might be broken. If the ribbon clogs somewhere, take out the cartridge, take up ribbon slack again, and slowly re-insert the cartridge.

Loading Ribbons



9) Once both the ink ribbon cartridge and the re-transfer ribbon cartridge have been mounted, lock them in place by flipping down the lock lever.



10) After locking the ribbon cartridge in place, make sure that ribbon slack has been removed before closing the side door.

NOTE

- The side door is designed so as not to close unless you lock the ribbon cartridges in place with the lock lever. If you try to forcibly close the side door, there is a chance that the side door might be damaged.
- Caution in ribbon replacement: It is imperative to take out the cartridge from the P-55. If you try to force the ribbon replacement with the cartridge mounted, there is a chance that the ribbon or components involved might be damaged.
- Be sure to change the ink ribbon when it is fully consumed, which yields the error message "No INK Ribbon" or "No TFR Ribbon". (If you open and close the side door without changing a fully consumed ribbon, a tape that holds the ribbon shaft and the ribbon itself in place may be peeled off and thus the ribbon may get stuck in the mechanism, likely causing the printer to go out of order).
- Avoid dust to store the ribbon installed in the ribbon cartridge.

4. Checking the Remaining Ribbon Amount

3	I	n	k	R	e	m	a	i	n		○
---	---	---	---	---	---	---	---	---	---	--	---



3	T	R	F			9	9	%		○
	I	N	K			9	9	%		

When the P-55 is Ready as the LCD indicates, press the SELECT button as many times as necessary for "Ink Remain" to appear on the LCD, and then press the ENTER button.

The re-transfer ribbon's remaining amount is indicated on the upper line and the ink ribbon's remaining amount on the lower line, expressed as a percentage.

(The remaining ribbon amount shown on the LCD is not absolute but just a rough "barometer".)

*The P-55 displays the remaining ink level for the ink ribbon as "INK FF%" if no single print operation is performed after the P-55 is turned on.

Once a print operation is performed, the display changes to a numerical value "INK nn%" indicating an estimate of the remaining ink in the ribbon.



Re-Order Information



P55 Dye Sublimation Re-Transfer Printer Supplies

- P55-CRS -- Color Ribbon Set 500 - 1 color (500) & 1 transfer (500)
- P55-PRS -- Photo Ribbon Set 500 - 1 photo (500) & 1 transfer (500)
- P55-BR -- Black Ribbon 2000 - NO transfer (order 2 P55-TR)
- P55-TR -- Transfer Ribbons 1000 - 2 ea. Transfers (500)
- P55-CK -- P55 Cleaning Kit
- P55-CINK -- Ribbon Rack for Color & Photo Ribbon
- P55-CIBK -- Ribbon Rack for Black Ribbon
- P55-CTRFR -- Ribbon Rack for Transfer Ribbon