

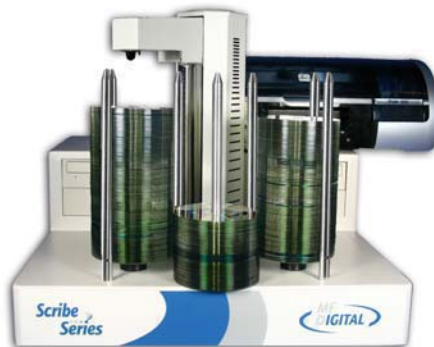
9000  
Series

MF  
DIGITAL

# QUICK CONNECT GUIDE

## Scribe 9600

Series



For a complete guide of instructions, see the manual located on the Manual CD that was shipped with your system.

[www.mfdigital.com](http://www.mfdigital.com)

MF  
DIGITAL

Rev 2-6-09

Software Manual is  
located on Manuals CD  
packaged with your  
system.

# CARTON CONTENTS

9000 Series Loader (9602 or 9604)

Power Cable

LAN Connection Guide

LAN Cable

Quick Connect Guide

User's Manual CD

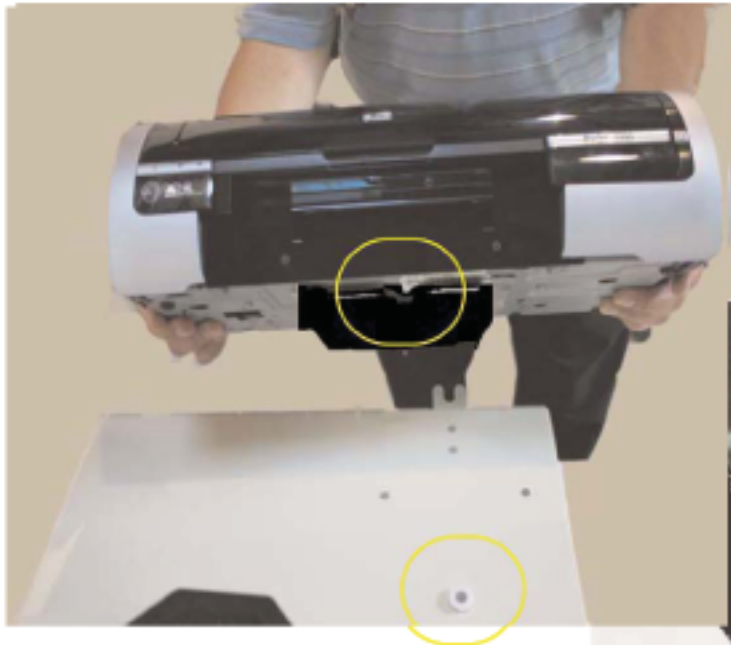
System Backup Software CD

## PC Cabling with no Printer and Hoppers



1. Attach a Monitor Keyboard and Mouse as shown above (not included from MF Digital).
2. Then plug your Scribe into AC Wall Receptacle.

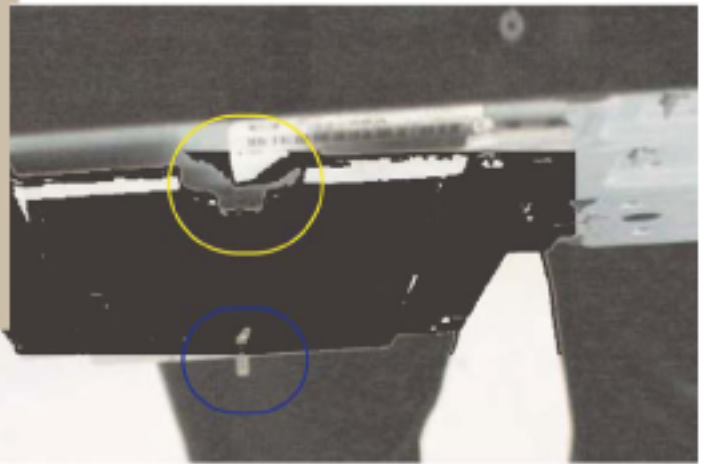
# Mounting & Connecting Your PicoJet 6000 Printer with the MF Digital Scribe.



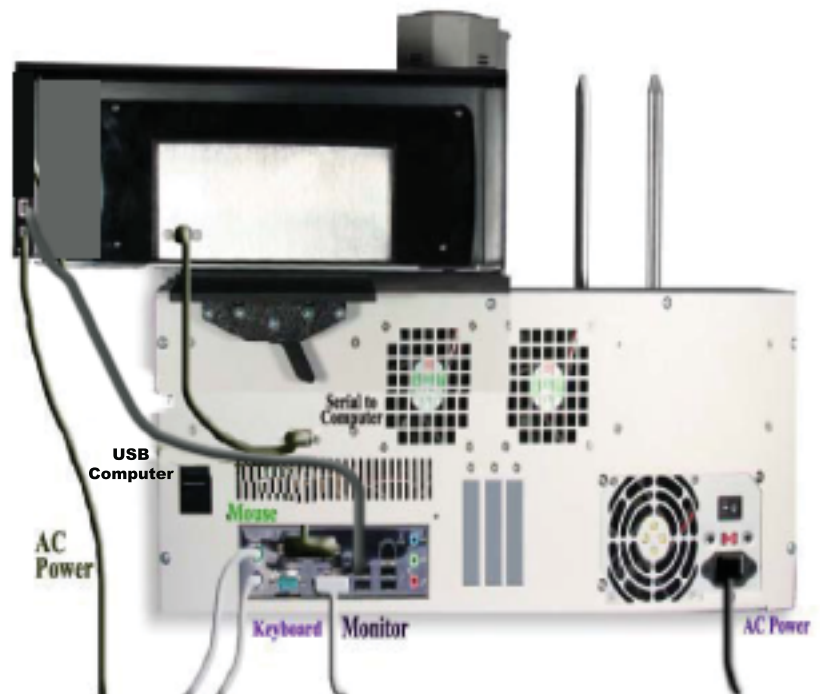
K  
E  
Y

Front

Rear



1. Locate the front of the mounting plate as indicated by the yellow circle to the right.
2. Slip the groove of the mounting plate around the white plastic knob. See picture above (yellow circle).
3. The latch located at the rear of the mounting plate will line up with the "U" shaped housing located on the rear of the MF Digital Scribe Unit. See picture above (blue circle).
4. After mounting the Printer, be sure to push the printer all the way forward then use the latch to secure the printer to the MF Digital Scribe Unit.
5. To wire your printer to MF Digital Scribe, please follow the wiring diagram to the right.



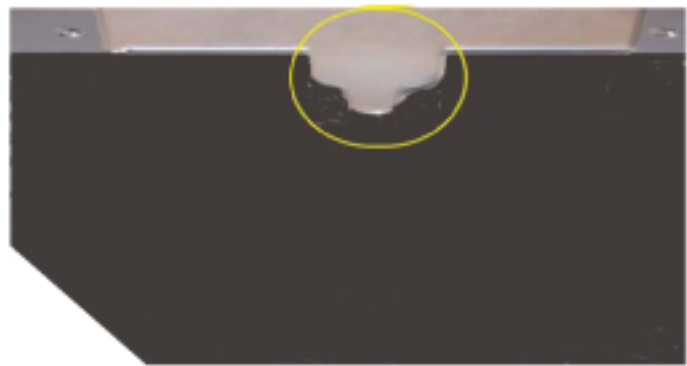
# Mounting & Connecting Your Prism Plus Printer with the MF Digital Scribe.



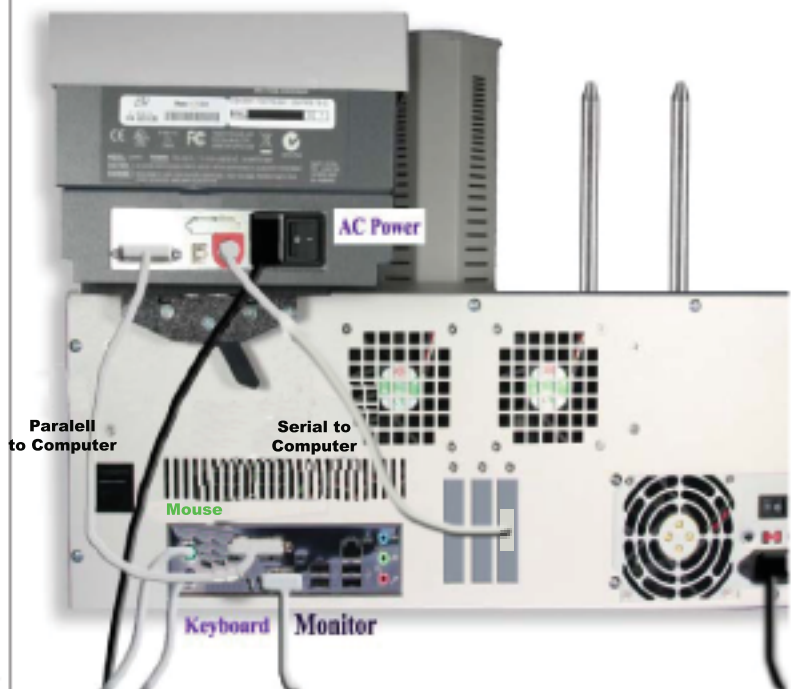
K  
E  
Y

Front

Rear



1. Locate the front of the mounting plate as indicated by the yellow circle to the right.
2. Slip the groove of the mounting plate around the white plastic knob. See picture above (yellow circle).
3. The latch located at the rear of the mounting plate will line up with the "U" shaped housing located on the rear of the MF Digital Series Unit. See picture above (blue circle).
4. After mounting the Printer, be sure to push the printer all the way forward then use the latch to secure the printer to the MF Digital Scribe.
5. To wire your printer to MF Digital Scribe, please follow the wiring diagram to the right.





# Installing P55 Printer

---

Slide mounting bracket and printer on Scribe (Do not lock down lever yet)



Install all Cables as shown above (ttl, usb, power)

---

Electronically align through hyper-terminal – Please contact a MFD technical support representative for this process.

# Installing P55 Printer

---

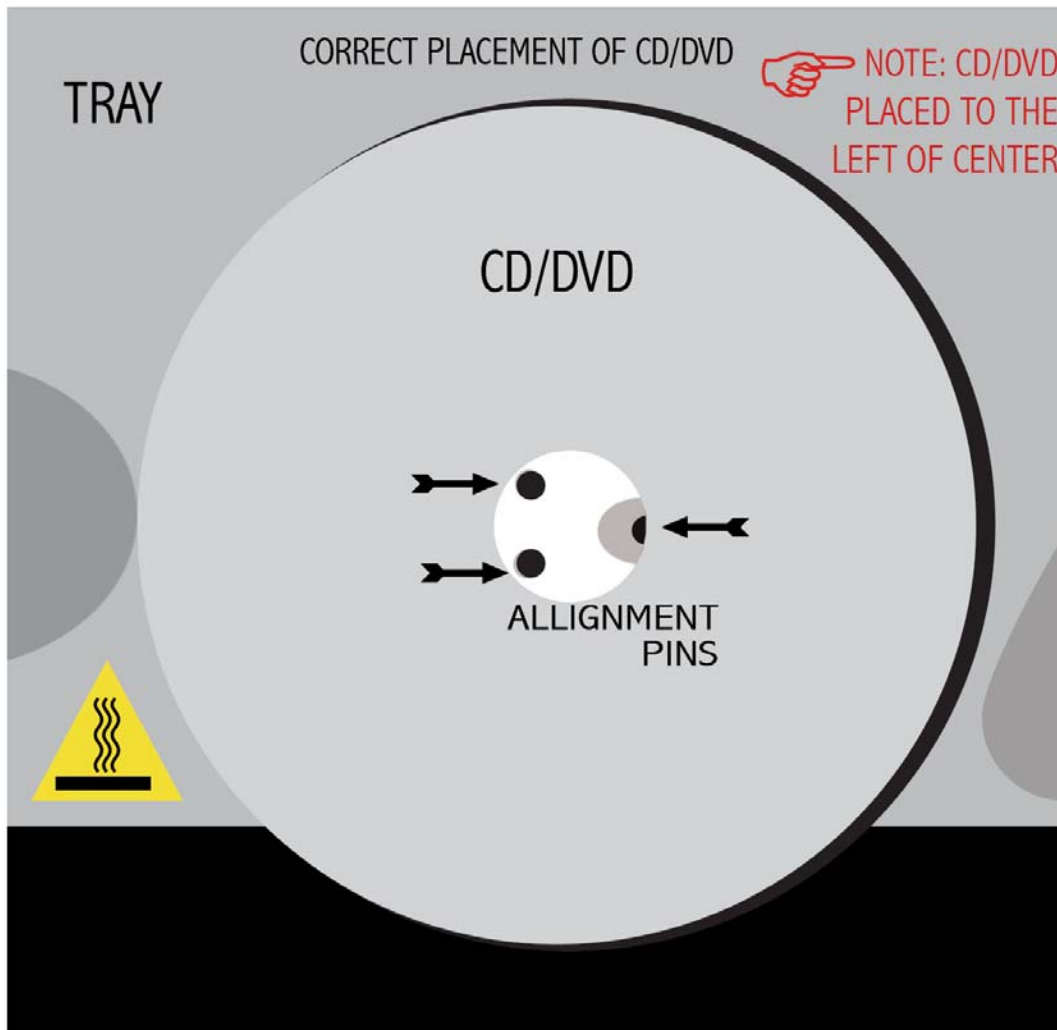
Lock down printer with locking lever.

---

Start Scribe and Go!



The CD/DVD should be placed on the Teac Printer Tray as shown in the diagram below.

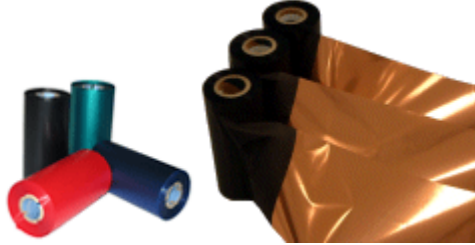


This page left blank intentionally.

This page left blank intentionally.

# Genuine MF Digital Consumables

## Thermal Printer Supplies



Thermal CD/DVD Printer Ribbons  
The Gold Standard

Part#	Product Description
CDP-PRN-BK	750' Black Ribbon for Prism Plus (Fine Line Print)
CDP-PRN-BLK	850' Black Ribbon for Spectrum 2 Printers
CDP-PRN-RED	656' Red Ribbon for Prism Plus & Spectrum 2 Printers
CDP-PRN-BLUE	656' Blue Ribbon for Prism Plus & Spectrum 2 Printers
CDP-PRN-GRN	656' Green Ribbon for Prism Plus & Spectrum 2 Printers
CDP-PRN-MULTI	656' Multi Ribbon for Prism Plus

## Ink Jet Printer Supplies



Inkjet CD/DVD Printer Cartridges

Part#	Product Description
M56B	Black 19ml Ink Cartridge for PicoJet Inkjet Printer
M57C	Color 17ml Ink Cartridge for PicoJet Inkjet Printer