

9000
Series



QUICK CONNECT GUIDE

Scribe 9100

Series



For a complete guide of instructions, see the manual located on the Manual CD that was shipped with your system.

www.mfdigital.com



CARTON CONTENTS

9000 Series Loader

Power Cable

LAN Connection Guide

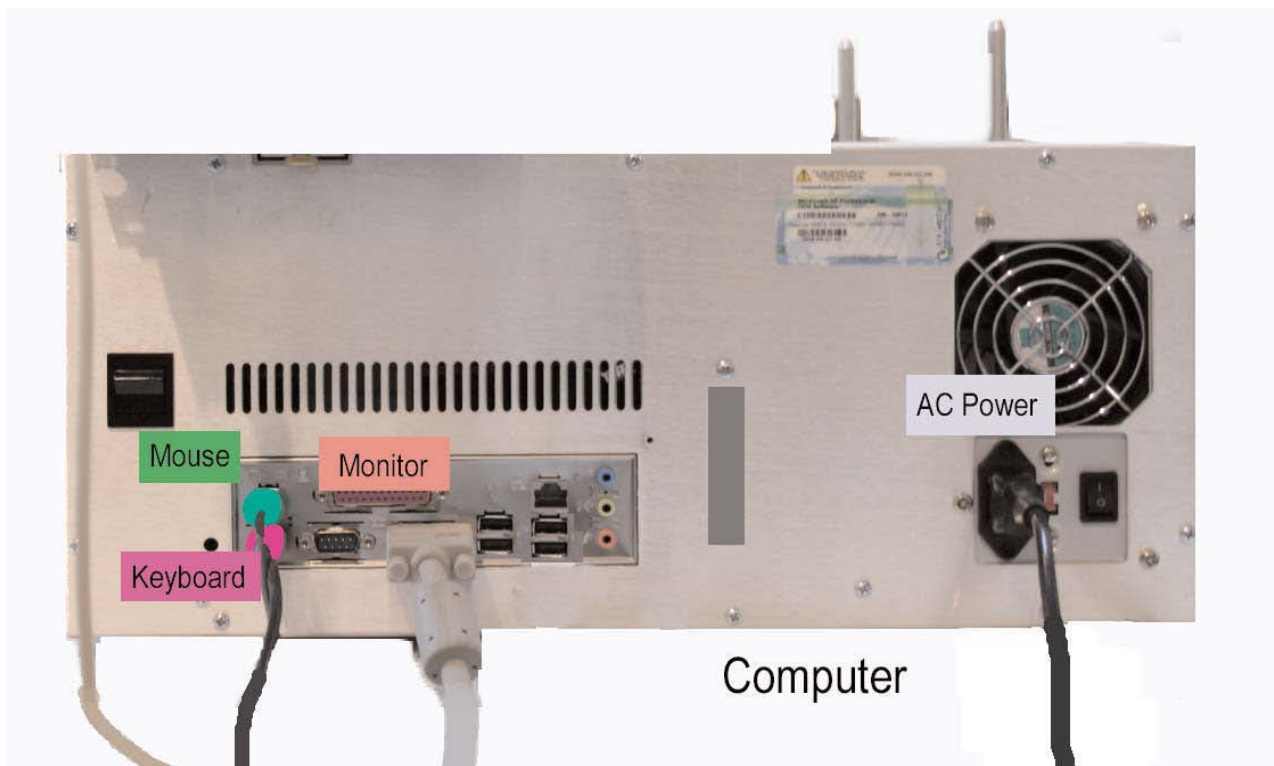
LAN Cable

Quick Connect Guide

User's Manual CD

System Backup Software CD

PC Cabling with no Printer



1. Attach a Monitor, Keyboard and Mouse as shown above (not included from MF Digital).
2. Then plug your 9000 Series into AC Wall Receptacle.

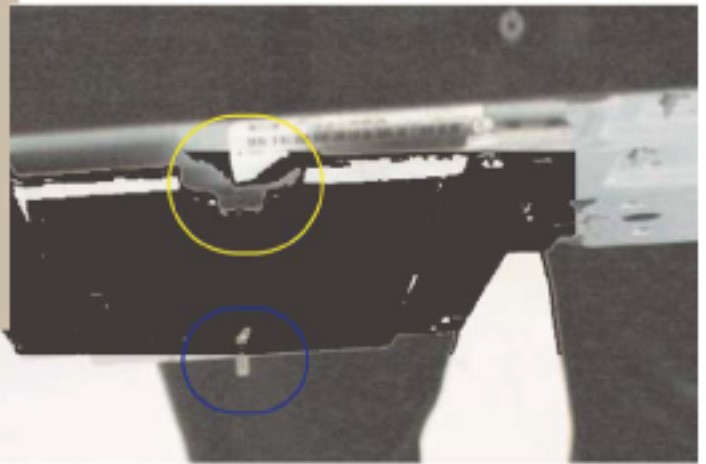
Mounting & Connecting Your PicoJet 6000 Printer with the MF Digital Scribe.



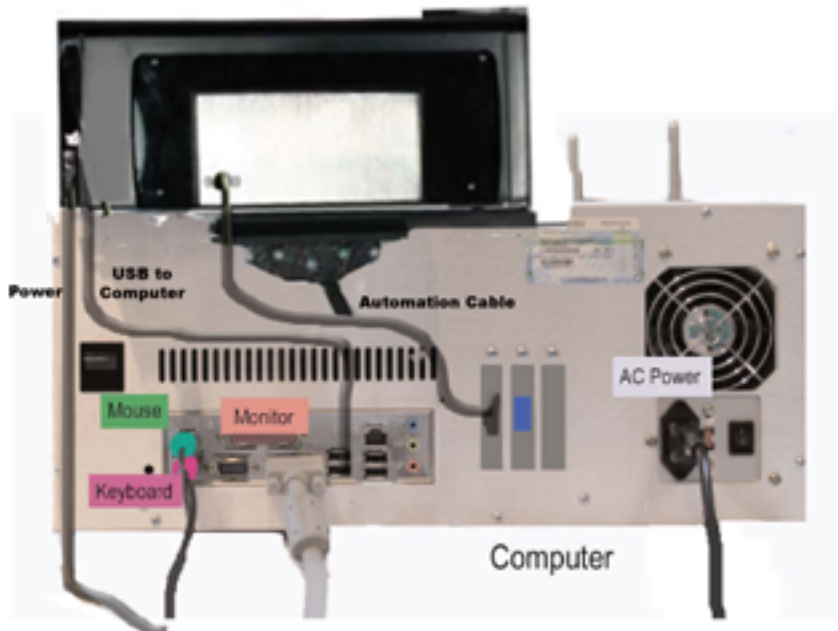
K
E
Y

Front

Rear



1. Locate the front of the mounting plate as indicated by the yellow circle to the right.
2. Slip the groove of the mounting plate around the white plastic knob. See picture above (yellow circle).
3. The latch located at the rear of the mounting plate will line up with the "U" shaped housing located on the rear of the MF Digital Scribe Unit. See picture above (blue circle).
4. After mounting the Printer, be sure to push the printer all the way forward then use the latch to secure the printer to the MF Digital Scribe Unit.
5. To wire your printer to MF Digital Scribe, please follow the wiring diagram to the right.



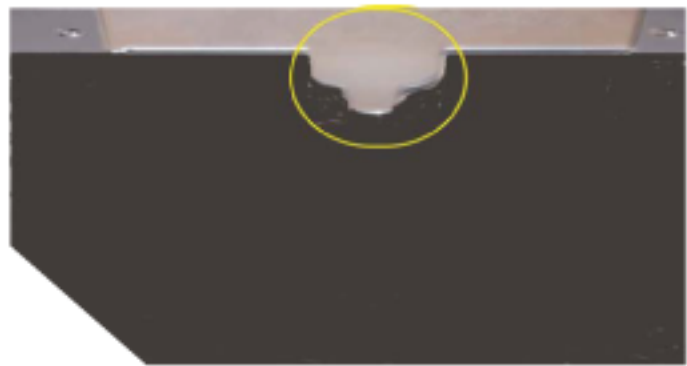
Mounting & Connecting Your Prism Plus Printer with the MF Digital Scribe.



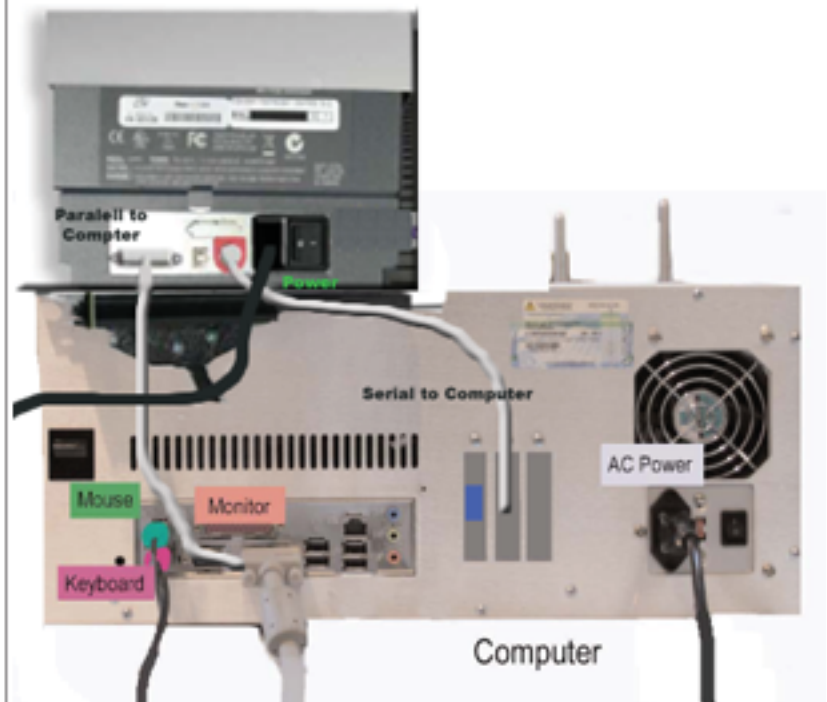
K
E
Y

Front

Rear



1. Locate the front of the mounting plate as indicated by the yellow circle to the right.
2. Slip the groove of the mounting plate around the white plastic knob. See picture above (yellow circle).
3. The latch located at the rear of the mounting plate will line up with the "U" shaped housing located on the rear of the MF Digital Series Unit. See picture above (blue circle).
4. After mounting the Printer, be sure to push the printer all the way forward then use the latch to secure the printer to the MF Digital Scribe.
5. To wire your printer to MF Digital Scribe, please follow the wiring diagram to the right.



Installing P55 Printer

Slide mounting bracket and printer on Scribe (Do not lock down lever yet)



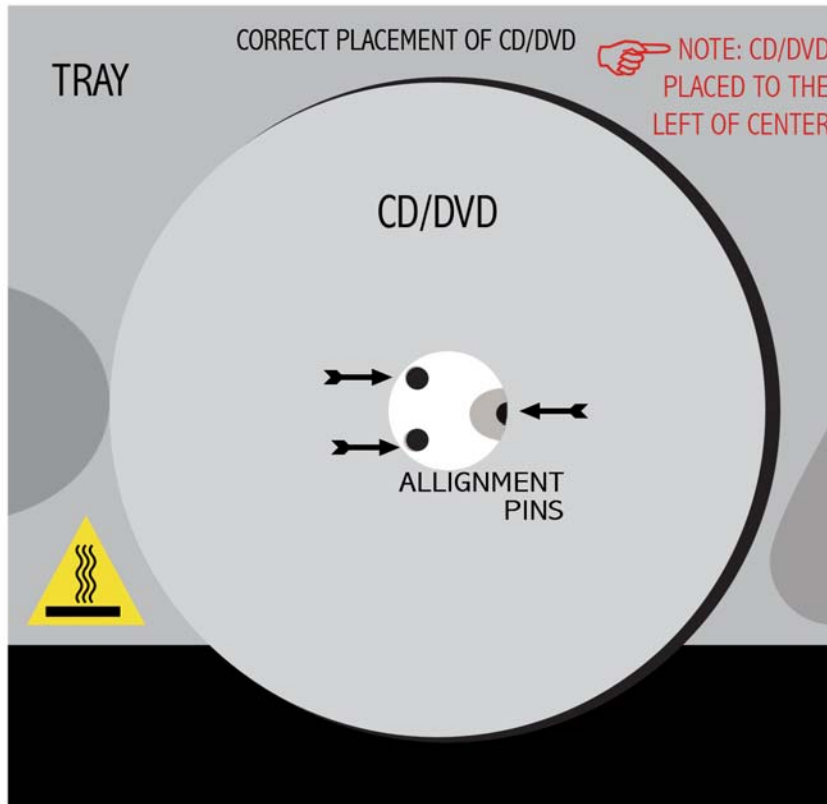
Install all Cables as shown above (ttl, usb, power)

Electronically align through hyper-terminal – Please contact a MFD technical support representative for this process.

Lock down printer with locking lever.

Start Scribe and Go!

The CD/DVD should be placed on the Teac Printer Tray as shown in the diagram below.



Genuine MF Digital Consumables

Thermal Printer Supplies



Thermal CD/DVD Printer Ribbons
The Gold Standard

Part#	Product Description
CDP-PRN-BK	750' Black Ribbon for Prism Plus (Fine Line Print)
CDP-PRN-BLK	850' Black Ribbon for Spectrum 2 Printers
CDP-PRN-RED	656' Red Ribbon for Prism Plus & Spectrum 2 Printers
CDP-PRN-BLUE	656' Blue Ribbon for Prism Plus & Spectrum 2 Printers
CDP-PRN-GRN	656' Green Ribbon for Prism Plus & Spectrum 2 Printers
CDP-PRN-MULTI	656' Multi Ribbon for Prism Plus

Ink Jet Printer Supplies



Inkjet CD/DVD Printer Cartridges

Part#	Product Description
M56B	Black 19ml Ink Cartridge for PicoJet Inkjet Printer
M57C	Color 17ml Ink Cartridge for PicoJet Inkjet Printer



Teac P55 Dye-Sublimation Consumables

Part#	Product Description
P55-VMS	-- Versamax Ribbon Set - 1 color (500) & 1 transfer (500)
P55-CRS	-- Color Ribbon Set 500 - 1 color (500) & 1 transfer (500)
P55-PRS	-- Photo Ribbon Set 500 - 1 photo (500) & 1 transfer (500)
P55-BR	-- Black Ribbon 2000 - NO transfer (order 2 P55-TR)
P55-TR	-- Transfer Ribbons 1000 - 2 ea. Transfers (500)
P55-CK	-- P55 Cleaning Kit
P55-UNIV	-- Ribbon Rack for Versamax
P55-CINK	-- Ribbon Rack for Color & Photo Ribbon
P55-CIBK	-- Ribbon Rack for Black Ribbon
P55-CTFR	-- Ribbon Rack for Transfer Ribbon