

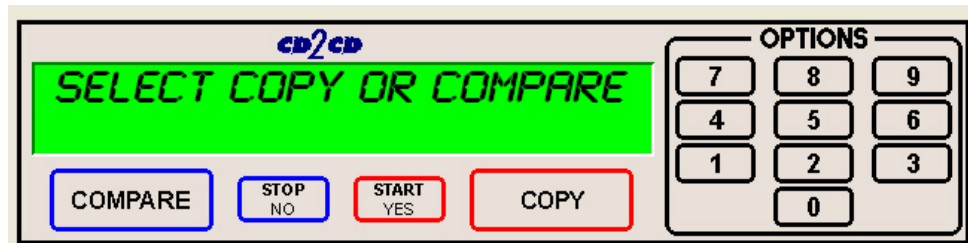
Quick Setup Guide for the Scribe SA Standalone Series Client Application

Utilizing the Scribe SA Standalone Series Client

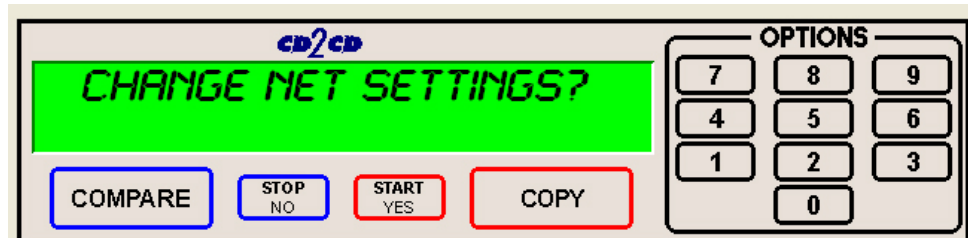
The Scribe SA Standalone series has a client feature which enables a remote user.

Configuring the Scribe SA Standalone Series

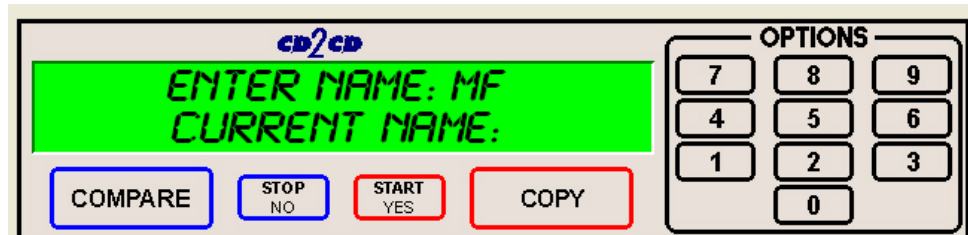
- Connect the Scribe SA Standalone Series to your network using the RJ-45 connector on the back of the system.
- Turn on the Scribe SA Standalone Series
- Wait for the Scribe SA Standalone Series to boot up, you will see:



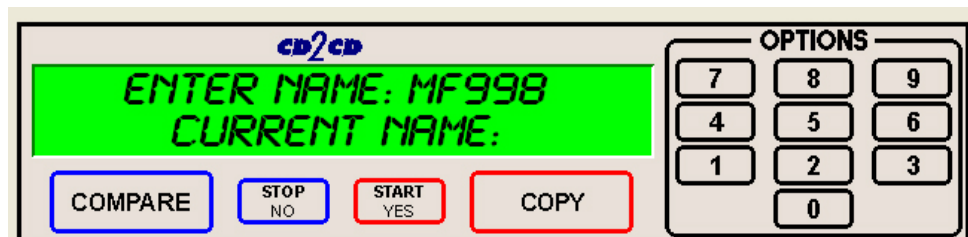
- Press the "7" key, you will see:



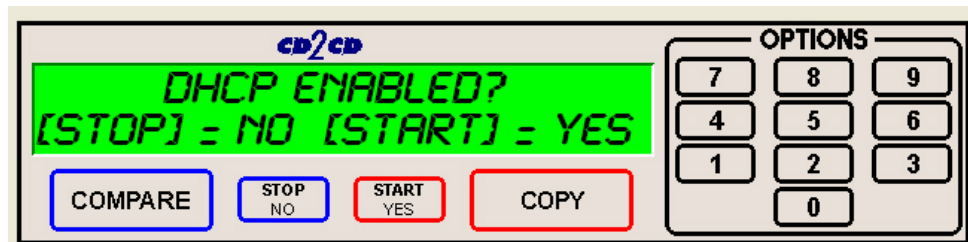
- Press the "START/YES" key, you will see:



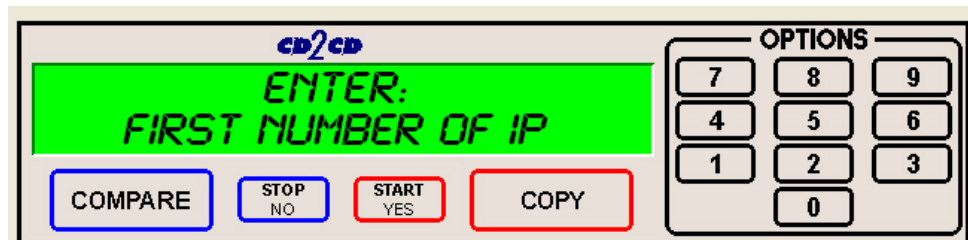
- You must leave "MF" at the front of the name. You should name it "MF001" for example.



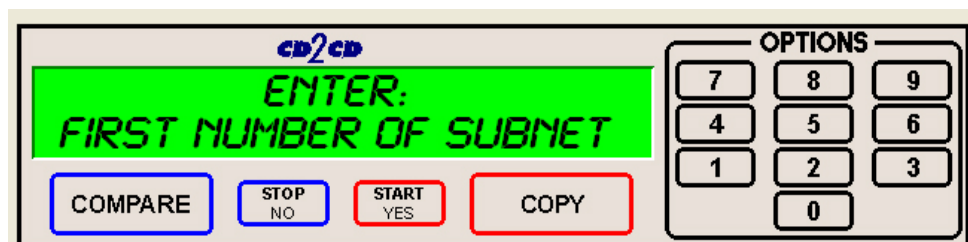
- Press the "START/YES" key, you will see:



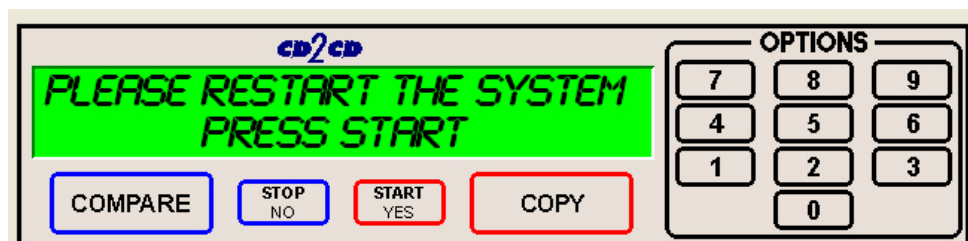
- Press the “Stop No” key if the network does not use DHCP or press the “START/YES” key if the network does use DHCP. If you press the “START/YES” key you will be prompted to Restart the system, if you press the “Stop No” key you will see:



- Enter the 4 sets of numbers of the IP address, one set at a time. After each octet press the “START/YES” key. Do not enter an IP address of a machine that is already on the network. When you have entered in the entire IP address, you will see:



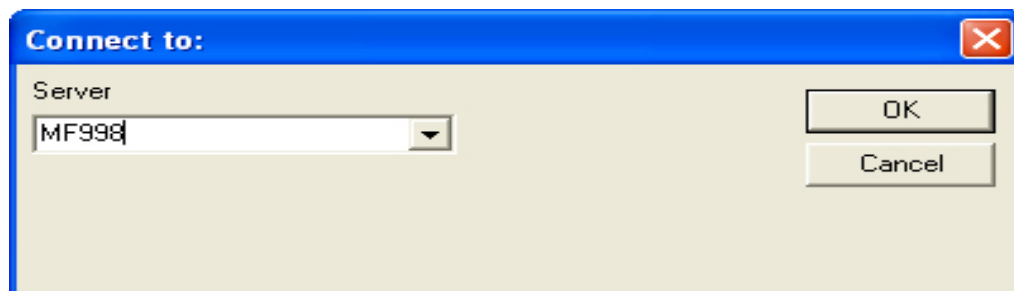
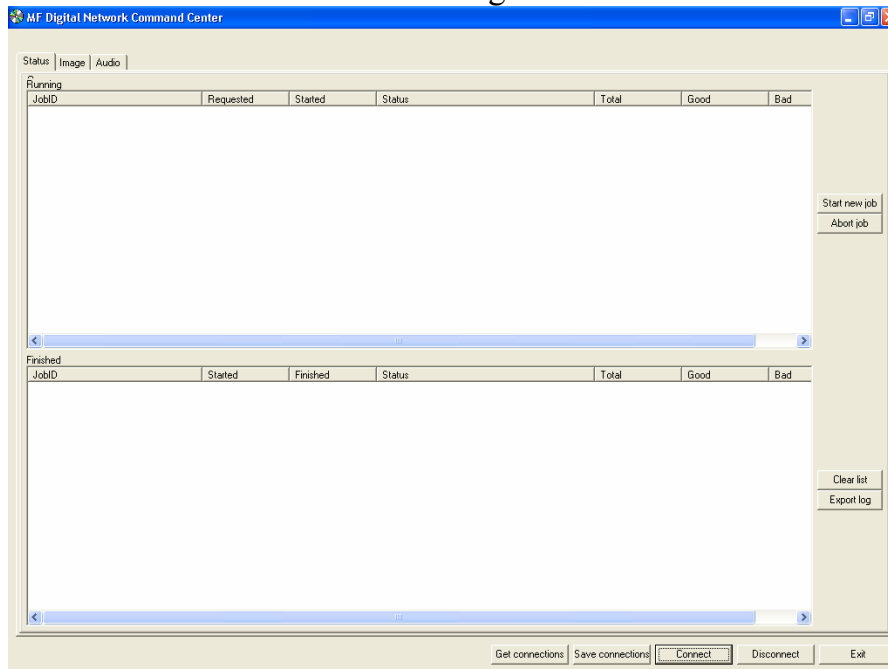
- Enter the 4 sets of numbers of the subnet. Pressing “START/YES” after each set. You will then see:



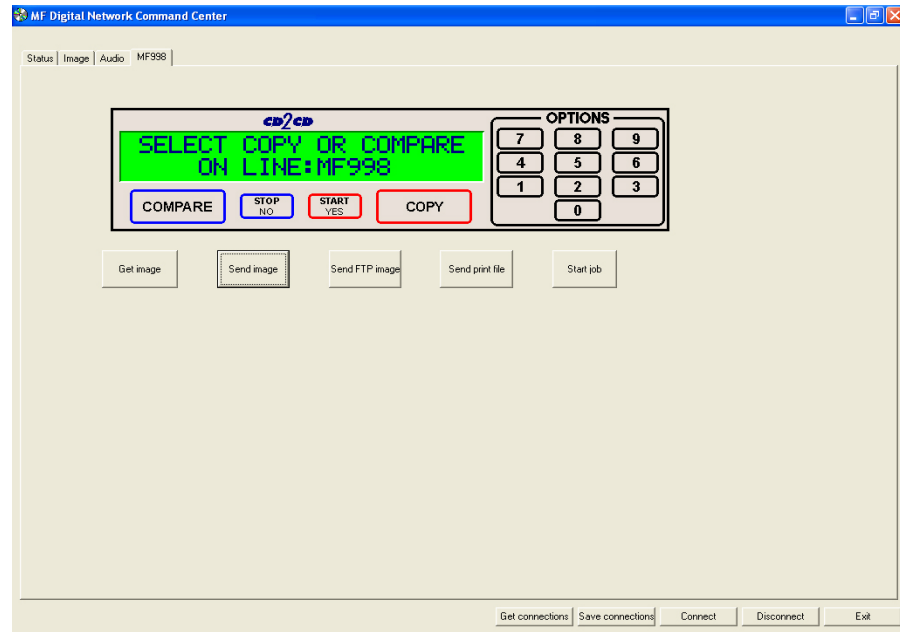
- Press the “START/YES” key and then Restart the system by turning it Off and back On again.

Installing the SA Client Application

- Place the firmware CD into the CD-ROM drive of your PC
- Double click on “Embedded” folder
- Copy the SaClient.EXE to the remote PC
- Once copied, double click on the SaClient.EXE file
- Press “Connect” in the lower right hand corner

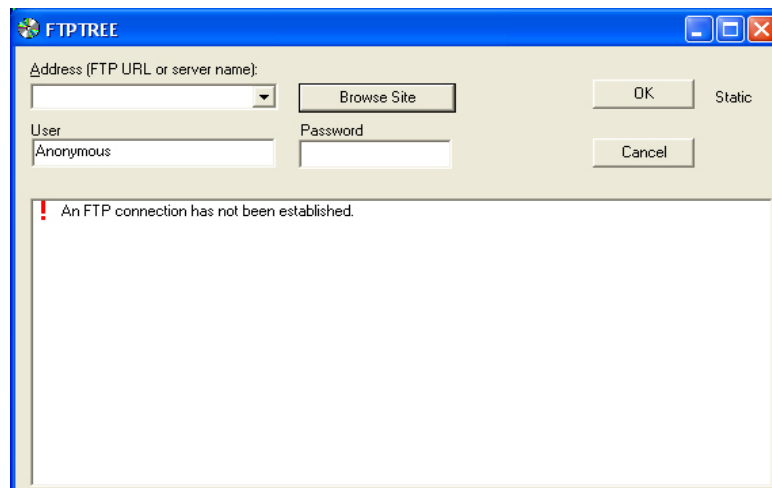


- Click in the Server Name Text Box and enter the name of the Scribe SA Standalone Series on the network.
- Press “OK”
- For this example, a new tab will appear at the top of the screen called “MF998”
- Click the “MF998” tab and you will see:



Utilizing the SA Client Application

- Click “Get image” to pull an image from the Scribe SA Standalone. Give the image a name and location. The image will be saved with a .img file extension.
- Click “Send image” to send an image to the Scribe SA Standalone. The image may be an .img, .iso, .udf, or .isc.
- Click “Send FTP Image” to send a image to the Scribe SA Standalone via FTP.



- Click “Send Print File” to send a PRN or PDF file to the Scribe SA Standalone.

Note: When submitting PDF files for printing via SaClient. The drivers for the printer in which you are submitting to, must be loaded on the client machine or workstation as SaClient.

Immediately following the submission of the PDF document, Adobe Acrobat Reader Print Dialog will appear. Please select the printer you are submitting to and click the Print Button.

- To start a job from the client on the individually connected Scribe SA Standalone, click “Start job”. Click “Browse” to select an image to burn to the Scribe SA Standalone. Select “Copy”, “Verify”, or “Test. Enter a quantity and click “OK”.

The screenshot shows a dialog box titled "Start job". It has a blue title bar with a close button (X) in the top right corner. The dialog contains the following elements:

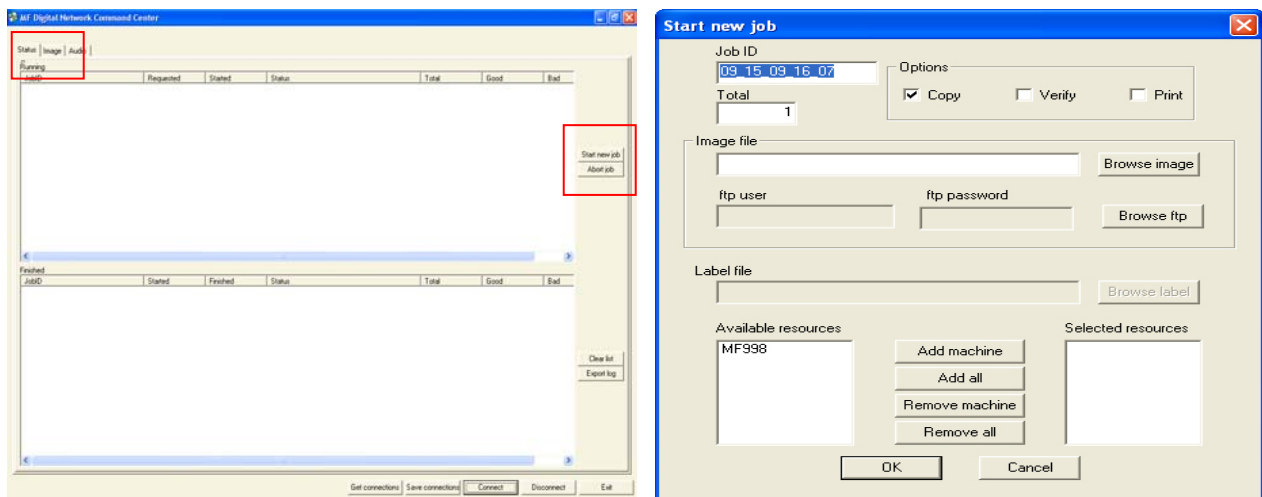
- An "Image file" text box with a "Browse" button to its right.
- "ftp user" and "ftp password" text boxes with a "Browse ftp" button to their right.
- A "Label file" text box with a "Browse" button to its right.
- Four checkboxes: "Copy" (checked), "Verify", "Print", and "Test".
- A "Quantity" text box with the value "1".
- "OK" and "Cancel" buttons at the bottom.



CAUTION

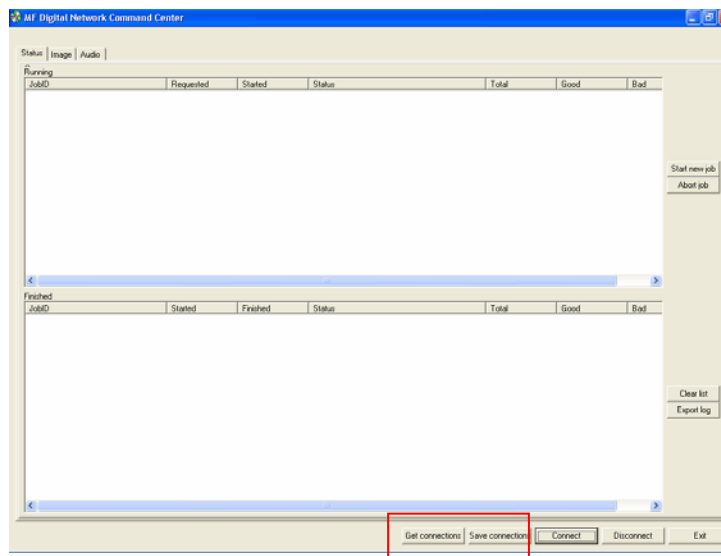
Please ensure the Client Machine or workstation where SaClient is being used, does not have the “full” version of Acrobat loaded. Instead please install Acrobat Reader, v 6.0 or higher.

The Start New Job Dialog can be accessed from the Status Tab, and clicking the Start New Job Button on the right. This dialog is used when the remote user wants to submit a job to multiple machines at once. Individuals who are running a production floor will find this option useful. As you can add/remove resources(SA Units) as needed. You can even specify a Job ID if desired. The default Job ID consists of the Month_Date_Hours_Minutes_Seconds



The SA Client application makes it easier to now connect to many units simultaneously. Once you connect to all your units, simply press the **SAVE CONNECTIONS** button. This will make a registry entry on your Remote PC remembering which units you are connected to.

When you are ready to reconnect to all of your units, simply press the **LOAD CONNECTIONS** button, and all your units will be automatically and simultaneously connect with just click of a button



Tip: *Keep in mind the SAVE and LOAD Connections are saved per Remote PC. If you want to save/load connections on multiple PC's you will need to connect to each Scribe SA Standalone first, then save your connections on that PC.*