



Ripstation v4.4.11.0 Operating Manual

Ripstation
A Division of Formats Unlimited, Inc
155 Sherwood Avenue
Farmingdale, NY 11735

T: +1 631 249 9393
F: +1 631 249 9273

Authors: Robert Warnock & Patrick McGrath
support@ripstation.com
www.ripstation.com/support

Copyright

All rights within this document and related software belong to Formats Unlimited.
Ripstation is a registered trademark of Formats Unlimited.

**BY USING THIS SOFTWARE YOU ARE AGREEING TO THESE TERMS AND
CONDITIONS.**

This software (the SOFTWARE) is prepared as a solution to dealers, systems integrators. This SOFTWARE is provided as is and with warranty only as detailed in the applicable License agreement.

Ripstation specifically disclaim to the fullest extent permitted by law all warranties, expressed or implied, including but not limited to implied warranties of merchantability and fitness for a particular purpose, with respect to this software. Ripstation shall have no liability including without limitation in negligence with respect to this software. Ripstation shall have no liability including without limitation in negligence with respect to any loss or damage directly or indirectly arising out of the use of this software.

Without limiting the foregoing, Ripstation shall not be liable, including without limitation in negligence for any loss of profit, interruption of business, loss or damage to equipment or data, interruption of operations or any other damage, including but not limited to direct, special, incidental or consequential damages. This software must not be used for unauthorised duplication of CD's or any other works protected by copyright unless permitted by law. No license to infringe copyright is granted by the possession, installation and/ or use of this software. Any statutory rights you may have are unaffected.

Software EULA

End User Software License Agreement for Ripstation Software

NOTICE TO ALL USERS: PLEASE CAREFULLY READ THE FOLLOWING LEGAL AGREEMENT ("AGREEMENT") FOR THE LICENSE OF Ripstation ("SOFTWARE") BY Formats Unlimited, Inc. ("FUI"). BY CLICKING THE ACCEPT BUTTON OR INSTALLING THE SOFTWARE, YOU (EITHER AN INDIVIDUAL OR A SINGLE ENTITY) CONSENT TO BE BOUND BY AND BECOME A PARTY TO THIS AGREEMENT. IF YOU DO NOT AGREE TO ALL OF THE TERMS OF THIS AGREEMENT, CLICK THE BUTTON THAT INDICATES THAT YOU DO NOT ACCEPT THE TERMS OF THIS AGREEMENT AND DO NOT INSTALL THE SOFTWARE.

1. License Grant. Subject to the payment of the applicable license fees, and subject to the terms and conditions of this Agreement and a pre agreed License term, FUI hereby grants to you a non-exclusive, non-transferable right to use one copy of the specified version of the Software and the accompanying documentation (the "Documentation") on one computer only unless otherwise agreed.

2. Term. This Agreement is effective for an unlimited duration unless and until earlier terminated as set forth herein. This Agreement will terminate automatically if you fail to comply with any of the limitations or other requirements described herein. Upon any termination or expiration of this Agreement, you must destroy all copies of the Software and the Documentation. You may terminate this Agreement at any point by destroying all copies of the Software and the Documentation.

3. Ownership Rights. The Software is protected by International copyright laws and international treaty provisions. FUI and its suppliers own and retain all right, title and interest in and to the Software, including all copyrights, patents, trade secret rights, trademarks and other intellectual property rights therein. Your possession, installation, or use of the Software does not transfer to you any title to the intellectual property in the Software, and you will not acquire any rights to the Software except as expressly set forth in this Agreement.

4. Restrictions. You may not rent, lease, loan, sublicense or resell the Software. You may not permit third parties to benefit from the use or functionality of the Software via a timesharing, service bureau or other arrangement. You may not transfer any of the rights granted to you under this Agreement. You may not reverse engineer, decompile, or disassemble the Software, except to the extent the foregoing restriction is expressly prohibited by applicable law. You may not modify, or create derivative works based upon, the Software in whole or in part. You may not copy the Software or Documentation. Except that you may either (a) make one copy of the Software solely for backup or archival purposes, or (b) transfer the Software to a single hard disk provided that you keep the original solely for backup or archival purposes. You may not remove any proprietary notices or labels on the Software. All copies must contain the same proprietary notices that appear on and in the Software. All rights not expressly set forth hereunder are reserved by FUI.

5. Warranty and Disclaimer.

a. Limited Warranty. FUI warrants that for sixty (60) days from the date of original purchase the media (e.g., CD-Rom) on which the Software is contained will be free from defects in materials and workmanship.

b. Remedies. FUI and its suppliers' entire liability and your exclusive remedy for any breach of the foregoing warranty shall be, at FUI's option, either (i) return of the purchase price paid for the license, if any, or (ii) replacement of the defective media in which the Software is contained. You must return the defective media to FUI at your expense with a copy of your receipt. This limited warranty is void if the defect has resulted from accident, abuse, or misapplication. Any replacement media will be warranted for the remainder of the original warranty period.

c. Warranty Disclaimer. Except for the limited warranty set forth herein, THE SOFTWARE IS PROVIDED "AS IS." TO THE MAXIMUM EXTENT PERMITTED BY APPLICABLE LAW, FUI DISCLAIMS ALL WARRANTIES, EITHER EXPRESS OR IMPLIED, INCLUDING BUT NOT LIMITED TO IMPLIED WARRANTIES OF MERCHANTABILITY, FITNESS FOR A PARTICULAR PURPOSE, TITLE AND NONINFRINGEMENT WITH RESPECT TO THE SOFTWARE AND THE ACCOMPANYING DOCUMENTATION. YOU ASSUME RESPONSIBILITY FOR SELECTING THE SOFTWARE TO ACHIEVE YOUR INTENDED RESULTS, AND FOR THE INSTALLATION OF, USE OF, AND RESULTS OBTAINED FROM THE SOFTWARE. WITHOUT LIMITING THE FOREGOING PROVISIONS, FUI MAKES NO WARRANTY THAT THE SOFTWARE WILL BE ERROR-FREE OR FREE FROM INTERRUPTIONS OR OTHER FAILURES OR THAT THE SOFTWARE WILL MEET YOUR REQUIREMENTS. SOME STATES AND JURISDICTIONS DO NOT ALLOW LIMITATIONS ON IMPLIED WARRANTIES, SO THE ABOVE LIMITATION MAY NOT APPLY TO YOU. The foregoing provisions shall be enforceable to the maximum extent permitted by applicable law.

6. Limitation of Liability. UNDER NO CIRCUMSTANCES AND UNDER NO LEGAL THEORY, WHETHER IN TORT, CONTRACT, OR OTHERWISE, SHALL FUI OR ITS SUPPLIERS BE LIABLE TO YOU OR TO ANY OTHER PERSON FOR ANY INDIRECT, SPECIAL, INCIDENTAL, OR CONSEQUENTIAL DAMAGES OF ANY CHARACTER INCLUDING, WITHOUT LIMITATION, DAMAGES FOR LOSS OF GOODWILL, COMPUTER FAILURE OR MALFUNCTION, OR FOR ANY AND ALL OTHER DAMAGES OR LOSSES. IN NO EVENT WILL TOPIARY BE LIABLE FOR ANY DAMAGES IN EXCESS OF THE LIST PRICE TOPIARY CHARGES FOR A LICENSE TO THE SOFTWARE, EVEN IF TOPIARY SHALL HAVE BEEN ADVISED OF THE POSSIBILITY OF SUCH DAMAGES. FURTHERMORE, SOME STATES AND JURISDICTIONS DO NOT ALLOW THE EXCLUSION OR LIMITATION OF INCIDENTAL OR CONSEQUENTIAL DAMAGES, SO THIS LIMITATION AND EXCLUSION MAY NOT APPLY TO YOU. The foregoing provisions shall be enforceable to the maximum extent permitted by applicable law.

7. Miscellaneous. This Agreement is governed by the laws of the Ireland, without reference to conflict of laws principles, and the parties agree that the sole location and venue for any litigation which may arise hereunder shall be Ireland. The application of the United Nations Convention of Contracts for the International Sale of Goods is expressly excluded. This Agreement sets forth all rights for the user of the Software and is the entire agreement between the parties. This Agreement supersedes any other communications with respect to the Software and Documentation. This Agreement may not be modified except by a written addendum issued by a duly authorized representative of FUI. No provision hereof shall be deemed waived unless such waiver shall be in writing and signed by FUI or a duly authorized representative of FUI. If any provision of this Agreement is held invalid, the remainder of this Agreement shall continue in full force and effect. The parties confirm that it is their wish that this Agreement has been written in the English language only.

8. The Software and Documentation are provided with Restricted Rights.

9. You agree not to export this software unless previously agreed with FUI

Copyright © 2002-2006 Formats Unlimited, Inc. All Rights Reserved.

Overview

Ripstation v4.4 is a suite of software to allow for batch transfer and encoding of CD material to digital music files utilising MF Digital's 7600 series robotic autoloaders.

The application operates on the Windows XP Platform.

The product is designed for use by individuals, system integrators and service providers and offers flexibility, ease of use and high throughput at the core of its operation.

Ripstation 4.4 is licensed on a seat or site license basis as selected by MF Digital's clients and subject to the conditions laid down in the applicable license agreement.

This document provides a user manual to allow basic and advanced operation as well as customisation of all parameters, set up and use of robotics.

Ripstation generally includes the following:

- Ripstation
- 7600 series Hardware
- AudioView

This document does not detail each of these applications and it is highly recommended that the relevant manuals be consulted for each of the above.

Contents

1.0 SOFTWARE INSTALLATION	8
1.1 PRE-INSTALL CHECKS	8
1.2 RUNNING THE EXECUTABLE	8
1.2.1 REGISTRATION	8
1.2.2 LIMITS ON REGISTRATION	9
2.0 HARDWARE INSTALLATION	10
2.1 ROBOTIC HARDWARE	10
2.2 STEP-BY-STEP GUIDE OF ROBOTIC HARDWARE – 7602/4	10
2.2.1 STEP ONE – REMOVE THE PACKING CONSTRAINTS	10
2.2.2 STEP THREE – PLUG IN THE PERIPHERALS (KVM PC-INSIDE UNITS ONLY)	10
2.2.4 STEP FOUR – PLUGGING IN A USB ROBOT	11
<ul style="list-style-type: none"> • ONCE YOU HAVE INSTALLED THE SOFTWARE, PLUG THE ROBOT INTO THE COMPUTER THEN TURN ON AT THE BACK. 	11
<ul style="list-style-type: none"> • ONCE THE FOUND NEW HARDWARE DIALOG HAS POPPED UP, CHOSE TO INSTALL THE DRIVERS FROM A SPECIFIC LOCATION AND SPECIFY THE DRIVER’S FOLDER OF THE SOFTWARE PROGRAM DIRECTORY. 	11
3.0 RIPSTATION QUICK START GUIDE	15
4.0 MAIN USER GUIDE	17
4.1 KEY FEATURES	17
4.3 SUPPORTED CODECS AND BIT RATES	18
4.3 RIPSTATION v4.4 MAIN SCREEN	19
4.3.1 BUTTON AND SCREEN OPERATIONS	20
4.3.1.1 Group 1: Button Controls	20
4.3.1.2 Group 2: CD-Rom Drive Display Bar	21
4.3.1.3 Group 3: Cover art Preview	21
4.3.1.4 Group 4: Metadata Preview	21
4.3.1.5 Group 5: Batch Status Window	22
4.3.1.6 Group 6: Internet and metadata provider Connection Status Window	22
4.3.1.7 Group 7: Batch Logging Window	23
4.3.2 MAIN SCREEN MENU OPTIONS	23
4.4 PREFERENCE SETTINGS	24
4.4.1 Metadata Tab	24
4.4.2 Data Tab	27
4.4.3 SQL Tab	27
4.4.4 Grooming Tab	28
4.4.5 Logging Tab	29

4.4.6 Ripping Tab	30
4.5 STARTING A NEW BATCH	32
4.5.1 BATCH SETUP	32
4.5.2 CODEC SETTINGS	33
4.5.3 OPERATIONS DURING BATCH RIP	36
4.5.3.1 Operations without Robotic Autoloader	36
4.5.3.2 Operations with Robotic Autoloader (MFD & Pro Series)	37
4.5.3.3 Reported errors	37
4.6 ACTIONS FOR COMPLETED BATCH	39
4.6.1 PODLOAD BUTTON (LOAD AN IPOD)	39
4.6.2 LOADING AN EXTERNAL HARD DRIVE	39
4.7 ERROR DETECTION & CORRECTION	40
4.8 OUTPUT REPORTS	40
<u>5.0 INTEGRATION WITH OTHER RIPSTATION PRODUCTS</u>	<u>41</u>
<u>6.0 HELP AND SUPPORT</u>	<u>42</u>
<u>7.0 UPGRADES</u>	<u>43</u>

1.0 Software Installation

1.1 Pre-install Checks

For Standalone PC Options:

- Windows XP with SP2, Vista or Windows 7
- Microsoft .NET 2.0, download from <http://www.microsoft.com/downloads/details.aspx?FamilyID=0856eacb-4362-4b0d-8edd-aab15c5e04f5&displaylang=en>
- PC platforms as specified in pre-install documentation
- Always on internet connection
- Windows Media Player 11 or above.

1.2 Running the Executable

- Ensure target PC is connected to the internet.
- To install the software, double click the icon '**ripstation44setup.exe**' to run and follow the onscreen prompts.
- It is recommended that the default paths be selected for installation.

1.2.1 Registration

- To activate the software installation, double click the program shortcut on the desktop.
- When prompted, as shown in figure 1.0, please key in the registration code supplied at the time of purchase or upgrade and click ok.

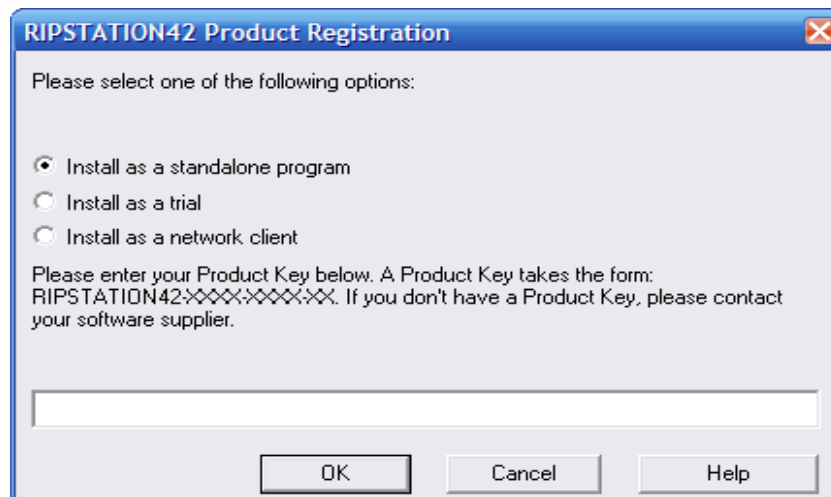


Figure 1.0 – Product Registration Code Screen

- Next, enter in the company details when presented with the screen as shown in figure 1.1 in order to complete the product registration and software installation.

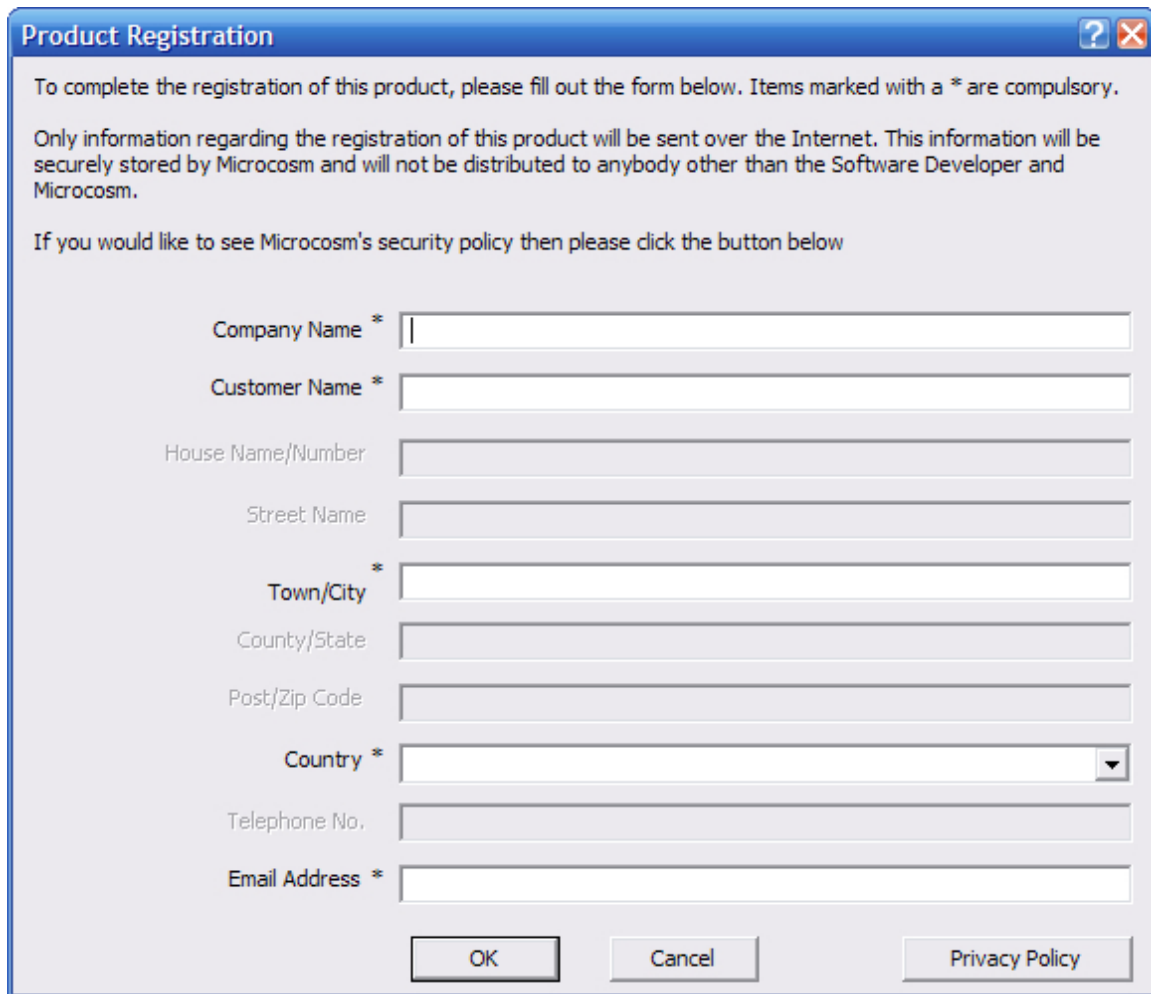
A screenshot of a 'Product Registration' dialog box. The title bar is blue with a question mark icon and a close button. The main area has a light blue background. It contains instructions: 'To complete the registration of this product, please fill out the form below. Items marked with a * are compulsory.' and 'Only information regarding the registration of this product will be sent over the Internet. This information will be securely stored by Microcosm and will not be distributed to anybody other than the Software Developer and Microcosm.' Below this is a link: 'If you would like to see Microcosm's security policy then please click the button below'. The form fields are: 'Company Name *' (text box), 'Customer Name *' (text box), 'House Name/Number' (text box), 'Street Name' (text box), 'Town/City *' (text box), 'County/State' (text box), 'Post/Zip Code' (text box), 'Country *' (dropdown menu), 'Telephone No.' (text box), and 'Email Address *' (text box). At the bottom are three buttons: 'OK', 'Cancel', and 'Privacy Policy'.

Figure 1.1 – Product Registration Details Screen

All details marked as * are required.

- Click OK to proceed and the application will connect to our server and verify your code.

1.2.2 Limits on Registration

In the case of a seat License, **ONE** code for activation is provided. The application may be uninstalled at any time and reinstalled on an alternate machine by following the process above. Please note however, only ONE copy of the software will run at any one time and a second installation of the software with the same code will prevent the first installation from being run.

2.0 Hardware Installation

This section details a set of instructions for correct assembly of the robotic hardware (if purchased). It begins by listing the items contained within the packaging.

2.1 Robotic Hardware

The autoloader box should contain:

1. The robotic hardware system
2. Power cable
3. These Quick Set-up Instructions
4. Warranty & support documents

2.2 Step-by-step guide of Robotic hardware – 7602/4

2.2.1 STEP ONE – Remove the Packing Constraints

- Carefully remove the autoloader from its carton, lifting from the bottom using the hand cut-outs in the foam base.
- DO NOT attempt to lift the machine using the spindles, column tower, or pick arm, as these are delicate pieces and are depended on for proper alignment and functioning of the unit.
- Place the system on a level workspace free of debris, dust, humidity, excessive heat, and electronic or electromagnetic interference.
- Keep out of direct sunlight.
- Allow at least six inches of clearance on all sides of unit for ventilation.
- Remove protective plastic cover from system and save along with the rest of the packaging.

2.2.2 STEP THREE – Plug in the Peripherals (KVM pc-inside units only)

- Plug in a monitor (VGA DSUB), keyboard and mouse (PS2 or USB) to the robot
- Attach the Ethernet cable.
- Using the enclosed 3-prong power cord, plug in the autoloader to a properly grounded AC receptacle. It is highly recommended that a surge protector is used to ensure safety in operation.
- Power on the unit using the main switch at the back
- Windows will now load and you will see the Ripstation Desktop
- Double click the icon for Ripstation MediaGrabber to run the ripper application.

2.2.4 Step Four – Plugging in a USB robot

- Once you have installed the software, plug the robot into the computer then turn on at the back.
- Once the found new hardware dialog has popped up, chose to install the drivers from a specific location and specify the driver's folder of the software program directory.

A small number of test CD's may be placed into input hopper.

All successfully ripped discs will be dropped off onto the accept spindle or appropriate hopper until the system has completed the quantity of discs requested, or runs out of media. Should any discs fail to be ripped due to a blemish or otherwise; they will be placed in the robot reject area, in front of the drive stack.

2.3 Step-by-step guide of Robotic Hardware - 7601XDP

2.3.1 Step One – Remove the Packing Constraints

- Carefully remove the autoloader from its carton.
- Unlock cover with the key and install the plastic rods.
- Place the system on a level workspace free of debris, dust, humidity, excessive heat, and electronic or electromagnetic interference.
- Remove protective plastic cover from system and save along with the rest of the packaging.

2.3.2 Step Two – Plug in the Peripherals

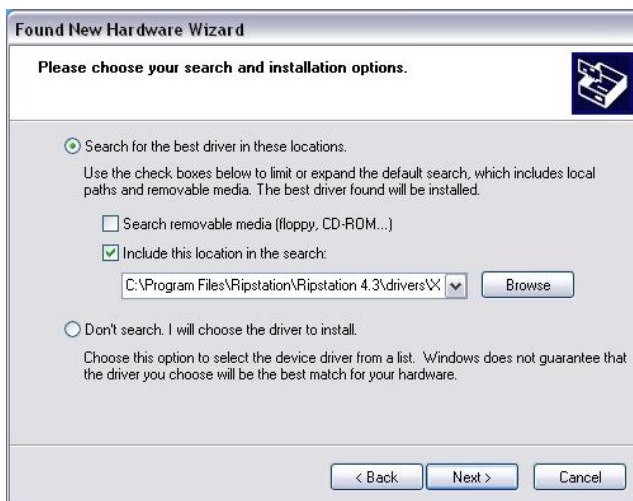
Using the power cord, plug in the autoloader to a properly grounded AC receptacle. It is highly recommended that a surge protector is used to ensure safety in operation. Then connect a USB cable from the 7601XDP to the PC.

2.3.3 Step Three - Installing the drivers

Then power on the unit using the main switch at the back of the autoloader and the "Found New Hardware Wizard" will open.



Select install from a list or specific location and click next and the Search and Installations window will open.



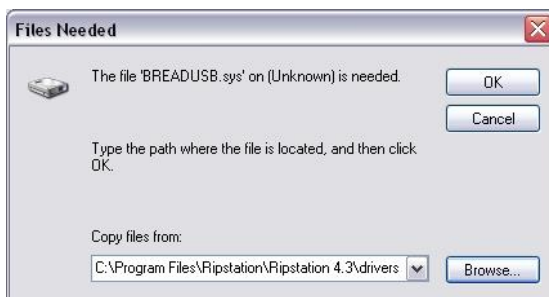
Select "include this location in this search" and browse to the XD Drivers folder which is located in the Ripstation program folder. Then click next.

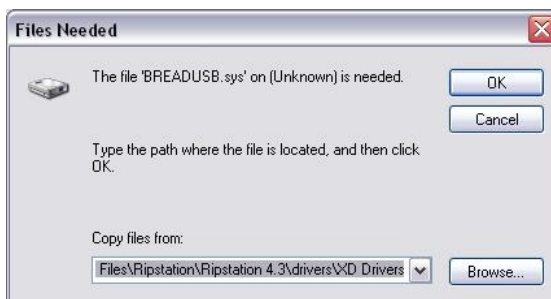
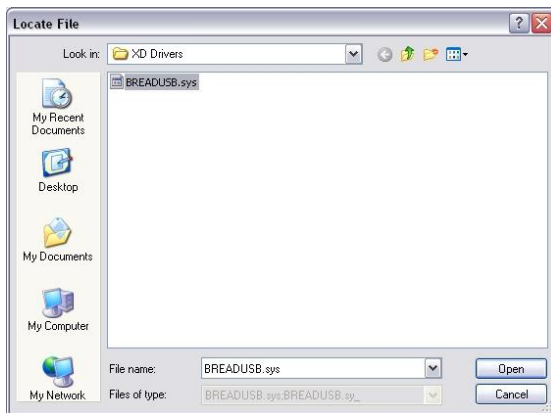


On the next window select the first driver which is mfd_md1.inf and click next.



Then another window will open that says breadusb.sys cannot be found. Browse to and open the XD Drivers folder in the Ripstation program folder. Select the breadusb.sys file and click OK. Then click OK again.





That is the driver installation complete and you can now click finish on the new hardware wizard.



2.3.4 Step Four – Loading Discs

- Discs for ripping are loaded to the top of the unit and the unit can hold 80 discs at one time.
- Completed discs are placed in the tray which can be removed from the bottom of the unit.
- Rejected discs are ejected through the slot in the front of the unit.

3.0 Ripstation Quick Start Guide

Before using the Ripstation software, please use the following steps as a 'quick start' guide to set the initial parameters and perform a simple MP3 batch rip.

1. Open the Ripstation software and on the main screen click the Preferences icon. The dialog box shown in figure 3.0 opens.
2. Select the ordering of lookups as GD3 First and the multiple FreeDB options Second then Click OK. You can open a GD3 account by clicking on the following link:

<http://www.getdigitaldata.com/AppSignUp/MFRipstationSignUp.aspx>

You can add GD3 look ups by clicking on the following link:

<http://www.getdigitaldata.com/Login.aspx?ReturnUrl=/Secure/AccountManager/GD3AccountManager.aspx>

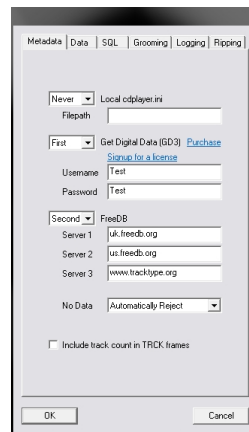



Figure 3.0 – Preferences Dialog Box

3. In the main screen click the new batch icon  and the batch properties dialog opens.
4. If using a 7602/4 device, you will need to configure the side what drive is on, and choose the correct COM port. To do this from the Source device pull down box, select 7602/4, the click the edit button beside it:

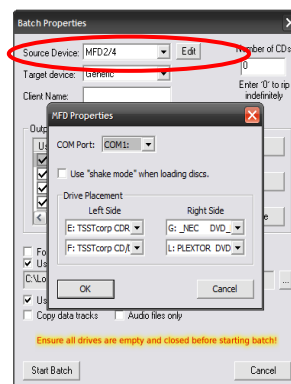
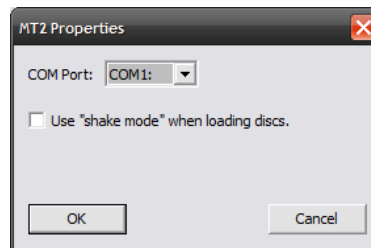


Figure 3.1 – MFD2/4 Properties Dialog

You then select which drives are left of the robotic arm, and which are right of it. You can also enable shake mode¹

5. If using a legacy MT2/4 device, select it from the dropdown box, then click edit. You have the option to choose the COM port that the robotic autoloader is connected to, and to use shake mode¹.

**Figure 3.2 – MT2/4 Properties Dialog**

¹Shake mode was introduced to address sticking discs being double loaded into drive tray. It is not supported by the MT1 robotic loader.

6. Enter your name, 'testrip' or 'myfirstrip' into the Client Name box. A folder of the same name will be created. This is where the audio files will be saved.
7. In the output formats section, highlight the MP3 codec and tick the 'Use' box on the left.
8. Stack some CDs onto any input spindle and click 'Start Batch' to commence the first batch rip!

NOTE: Ripping will continue until all CDs are ripped. Click the 'Open Client Folder' button to view the digitally encoded audio files.

4.0 Main User Guide

4.1 Key Features

- Batch encoding
- Batch reporting on successful & failed CDs
- Live batch process logging window
- Metadata lookup logging & reporting
- MFD series robotic autoloader and USB2.0 drive support
- Batch setup wizard
- Simultaneous multiple codec encoding
- Client detail entry
- SQL connectivity
- Support for GD3, FreeDB and CD Player.ini localised metadata services
- Full metadata & cover art preview
- Full metadata cover art support and embedding
- Web based lookup and embedding for missing cover art during batch process
- Automatic grooming of tag data during encode process
- Embedded company information
- UID client watermark embedding
- Switchable Unicode support
- ID3> 2.4 inc. 1.1
- Batch preview window – discs ripped/to go/no cover art/codecs/client name
- Single touch start and drive control
- Drive stop control
- Full C2 error checking
- Error output on the fly and post rip
- Metadata testing service
- Full target device support
- Post encode facility
- Fully scalable output masks
- Fully automatically updated
- Amazon cover art support
- Rip multi track discs to a single file
- Run third party exe after completed successful batch

4.3 Supported Codecs and bit rates

Installed as standard are the following codecs

<i>Codec</i>	<i>Supported options</i>
FLAC	Lossless
MP3	VBR/CBR 64/128/192/256/320 kbps
WMA	VBR/CBR 64/96/128/160/192/256/320 kbps Lossless
WAV	Embedded ID3 wav Request WAV Sonos RIFF WAV
AAC	VBR/CBR 96/128/160/192/224/320 kbps
OGG	45/64/80/96/112/128/160/192/224/256/320/499 kbps
AIFF	Lossless
APE	Lossless
WAVPACK	Lossless

4.3 Ripstation v4.4 Main Screen

The Ripstation main user interface is shown in figure 4.1 below. Operations are carried out using the button controls at the top of the screen and information is displayed throughout the rest of the screen. Figure 4.1 shows the interface split into groups from 1-7, Section 4.3.1 of the manual details each of these groups in turn.

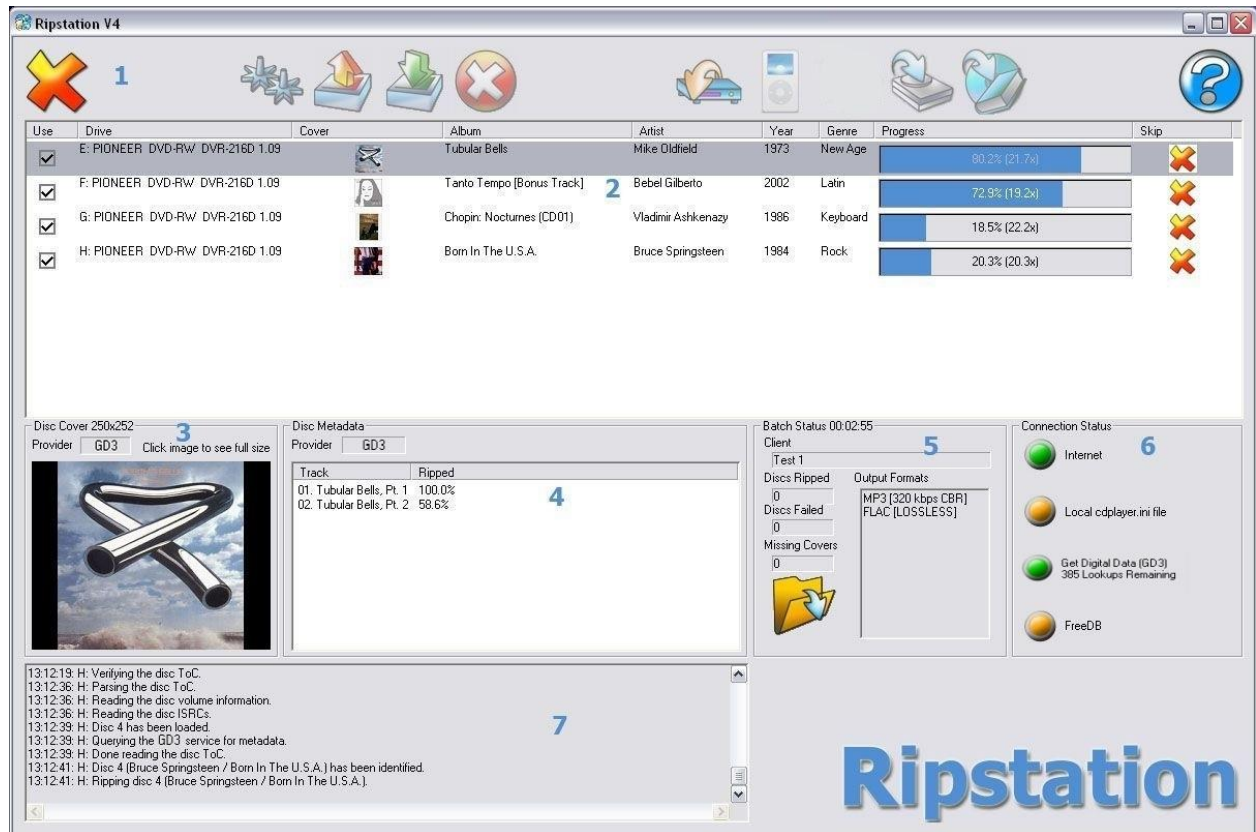


Figure 4.1 – Ripstation Main User Interface

4.3.1 Button and Screen Operations

4.3.1.1 Group 1: Button Controls

Figure 4.2 below shows a closer version of the button controls in the main user interface. They are labelled 1 –11 and are explained below.

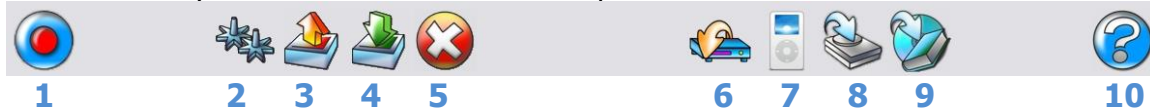


Figure 4.2 – Ripstation Button Controls

Button 1: New Batch / Cancel Batch

Opens the Start a New Batch dialog. If a batch is currently running, this button will change to the Cancel Batch button as shown in figure 4.1 and will cancel the batch if pressed.

Button 2: Preferences

Opens the preferences dialog.

Button 3: Load

Opens a browser dialog to load previously saved batch settings (.rsf file). Settings file contains Client Name, folder masks and configurations of all codecs, codec selection

Button 4: Save

Opens a browser dialog to save the current batch settings into a .rsf file.

Button 5: Delete Client Files

Deletes the last client folder that was ripped. Will display a confirmation dialog showing the name of the folder about to be deleted. **NOTE: If no client folder loaded – deletes all files ripped from the top level folder down.**

Button 6: Server Loading Module

Opens the MF Digital 'Audioload' module for server loading– please refer to this product's user manual.

Button 7: Podload Module

Opens iTunes for add to library function and iPod loading

Button 8: Send to Disk

Opens the MF Digital 'Send to HD' module for loading client audio to removable storage. Please refer to this product's user manual.

Button 9: AudioFile

Opens the optional MF Digital 'AudioFile' module HTML/PDF batch cataloguing. Please refer to this product's user manual.

Button 10: Help

Opens the Ripstation v4.4 help dialog.

4.3.1.2 Group 2: CD-Rom Drive Display Bar

The CD-Rom drive display bar shows the status of each CD-Rom device in the system. For the selected check box, the following information is displayed when a drive is ripping a disc:

- Thumbnail image of the current album cover art
- Album name
- Artist name
- Album year
- Genre
- (all above as provided by the metadata provider)
- Drive and firmware details
- Percentage complete progress bar (also shows drive read speed)

The Stop button (Disc Skip) to the right of each drive display will eject the current disc and place it onto the reject pile, before moving onto the next disc. Clicking anywhere on the display bar for a drive will change the information displayed on the cover art, metadata and batch status windows.

4.3.1.3 Group 3: Cover art Preview

The cover art preview window displays album cover art as shown in figure 4.3 for example. Disc Cover dimensions are displayed at the top of the window and the 'Provider' box shows the source of cover art - "Web" indicates a web retrieved cover art source (e.g. amazon). Clicking on the preview image will show a full resolution version of the cover art (actual pixel size). Click on the full resolution image to close it.



Figure 4.3 – Example of Cover Art Preview

4.3.1.4 Group 4: Metadata Preview

The metadata preview window displays a track listing for the disc in the currently selected drive, and indicates the metadata provider used as a source for this metadata. A percentage complete figure is displayed and updated in real time as each track is synchronously read from the disc and encoded.

4.3.1.5 Group 5: Batch Status Window

The batch status window as shown in figure 4.4 is designed to give a dynamic preview of the current batch job.

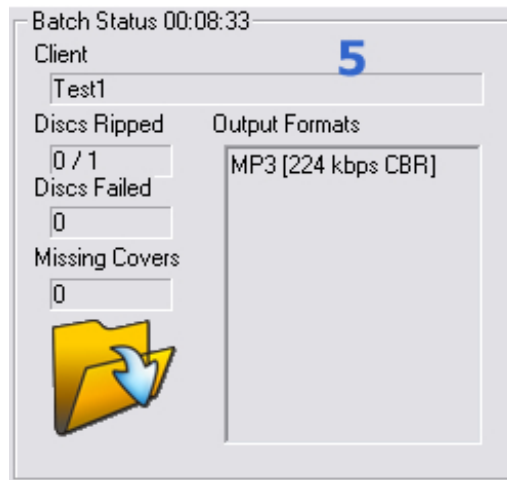


Figure 4.4 – Batch Status Box

The window provides the following information:

- Client name - as entered into the New Batch dialog
- Discs ripped - displayed in the form N/NN where N is the total ripped to date and NN is the total size of the batch. A wildcard * is used to denote when no maximum number of discs has been entered.
- Discs failed - number of discs rejected due to failing error correction
- Missing Covers - number of discs in current batch for which album art was not obtained from metadata services or the integrated web search.
- Elapsed Time - time elapsed since the start of the batch.
- Open Client Folder button - opens the client folder for the current batch in Windows Explorer. This is useful for checking that folders and files are being created as expected. This can be clicked safely during the batch process and will not affect operation.
- The settings for each codec that was selected for the current batch - the bit rate and VBR/CBR settings will be highlighted within the active codec.

4.3.1.6 Group 6: Internet and metadata provider Connection Status Window

The key for the connection status of the internet and the metadata providers is shown below.



Connectivity not tested



Connectivity tested and status OK



Connectivity tested and no response received

Internet connectivity is tested every 12 seconds. Metadata provider connectivity is tested when each database lookup request is sent to the provider. Metadata connectivity indicators remain amber until a lookup request is sent, a successful response from the provider will turn the indicator green while no response from the provider will turn the indicator red.

4.3.1.7 Group 7: Batch Logging Window

Real time logging of robotic operation, disc loading, metadata lookup, ripping and encoding process and failed CDs. Each log entry is time stamped.

4.3.2 Main Screen Menu Options

Right clicking in the top left corner of the main screen, over the 'Ripstation V4' heading opens the menu shown in figure 4.5.

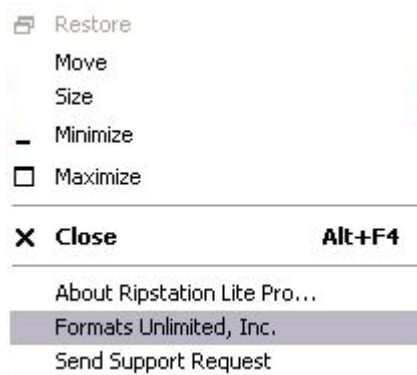


Figure 4.5 – Ripstation V4 Menu Options

- **About Ripstation V4** - Opens the about dialog showing program detail
- **Formats Unlimited, Inc.** - Opens the Ripstation homepage in your browser
- **Send Support Request** - Opens the Ripstation Support homepage in your browser

4.4 Preference Settings

Clicking on the preferences button opens the dialog box as shown in figure 4.6.



Figure 4.6 – Preferences Dialog Box (Metadata Tab)

4.4.1 Metadata Tab

The metadata tab selected in figure 4.6 allows for the following settings to be selected:

- **Local cdplayer.ini** - For metadata retrieval from a local cache, check the 'Local cdplayer.ini' checkbox and key in the full file path to the cdplayer.ini file (e.g. C:\Windows\cdplayer.ini).
- **GD3** – GD3 access is activated by entering a “Username” and “Password” key in the spaces provided. To get a “Username” and “Password”, you can open a GD3 account by clicking on the following link:

<http://www.getdigitaldata.com/AppSignUp/MFRipstationSignUp.aspx>

You can add GD3 look ups by clicking on the following link:

<http://www.getdigitaldata.com/Login.aspx?ReturnUrl=/Secure/AccountManager/GD3AccountManager.aspx>

- **FreeDB** – This is the web's main free metadata database. You can key in the web address of freedb.freedb.org or one of the local regional mirrors (shown in figure 4.7). FreeDB does not provide cover art.



Figure 4.7 – FreeDB Regional Mirrors

- **Tracktype** – This is another free metadata service like FreeDB. Key the web address www.tracktype.org into the FreeDB options in the metadata preferences as shown in figure 4.6. Tracktype does not provide cover art.
- **Metadata drop down boxes** – The boxes beside each metadata service provider allow the user to choose the order that Ripstation v4.4 queries each metadata provider. Click the drop down menu to the left of each provider and set to Never, First, Second or Third.
- **No Data Setting** - Four options exist for dealing with albums with no metadata.
 - **Automatically Rip** - Discs will be ripped using "Unknown Artist" for artist tag and artist folder name. The album name will be generated using a unique ID. All albums ripped in this way will be placed into an artist folder called 'Unknown Artist' for later tagging and naming. There are several added options to automatically rip. The second new option is to have a cddbld text file placed in the album folder for unknown discs.
 - **Automatically Reject** - Discs will be rejected and placed in the reject pile.
 - **Rip and Reject** - This option is the same as Automatically Rip except the unknown discs will be placed on the reject stack.
 - **Query User** - User will immediately be prompted to enter album information manually during the batch process, as shown in figure 4.8.
 - Select the genre from the dropdown list

- Key in the year of release
- Key in the artist name
- Key in the album name
- Click on each track to rename it
- Click the OK button to save and continue
- **Or** Click Skip to reject this CD and continue

The disc you have placed in this drive could not be identified.
Please enter the disc information or <Skip> this disc.

Genre: Year: Label:

Artist: Composer:

Album: Conductor:

Tracks:

01.	Track 01
02.	Track 02
03.	Track 03
04.	Track 04
05.	Track 05
06.	Track 06
07.	Track 07
08.	Track 08
09.	Track 09
10.	Track 10

Cover Art (click to browse):

OK Skip

Figure 4.8 – Metadata Manual Entry

NOTE: This facility cannot always provide 100% accurate cover art particularly for Various artists discs

- **Include track count in TRCK frames** - Check this option when ripping for iPod or iTunes.

4.4.2 Data Tab

In the preferences dialog box, select the data tab as shown in figure 4.9.



Figure 4.9 – Preferences Dialog Box – Data Tab

The company URL may be keyed in here such that it becomes embedded in the 'encoded by' field in the ID3 tag. Alternatively the box may be left blank.

4.4.3 SQL Tab

In the preferences dialog box, select the SQL tab as shown in figure 4.10.



Figure 4.10 – Preferences Dialog Box – SQL Tab

SQL enabled allows Ripstation v4.4 to write ALL information from metadata and client detail to a local SQL server. Simply check the box and key in the server details to enable this.

Please consult MF Digital detailed documentation for set up details.

4.4.4 Grooming Tab

In the preferences dialog box, select the Grooming tab as shown in figure 4.11.

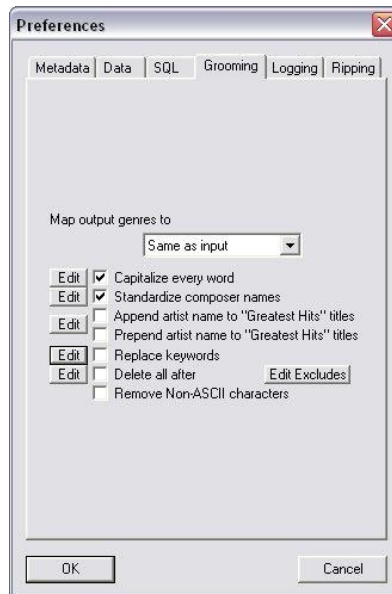


Figure 4.11 – Preferences Dialog Box – Grooming Tab

- **Map output genres to** - Using the drop down box, select the manufacturer to groom for and the genres will be mapped to the target list. These are supplied as standard with Ripstation v4.4 and are updated by MF Digital on a regular basis.
- **Capitalize every word** - Check this box to capitalise every new word of a phrase (e.g. *'a new day'* becomes *'A New Day'*). Click the edit list to edit the exceptions for this rule (e.g. of, a , the)
- **Standardise composer names** – Ensures consistent composer naming e.g. J S Bach, Johann Sebastian Bach, J Bach all become 'Bach'. Click edit to add a composer.
- **Append artist name** - Adds the artist name to the album 'Greatest Hits' e.g. 'Greatest Hits' by Madonna becomes 'Greatest Hits, Madonna'. Click edit to add to the list of album titles to perform this function on – e.g. best of, very best of etc.
- **Prepend artist name** - Adds the artist name to the album 'Greatest Hits' e.g. 'Greatest Hits' by Madonna becomes 'Madonna, Greatest Hits'. Click edit to add

to the list of album titles to perform this function on – e.g. best of, very best of etc.

- **Replace keywords** – Primarily for consistency of box sets, we can instruct the application to, for example search for 'disc1' and make it 'CD 1'. Click edit to add to the list of keywords to perform this function on.
- **Delete all after** – This function removes all words after specific keywords in the track title e.g. "Under Pressure Feat. David Bowie" would become "Under Pressure". Click edit to add to the list of keywords to perform this function on.
- **Remove Non-ASCII Characters** - Non ASCII characters will be replaced with the closest ASCII character equivalent. For example, "(Götterdämmerung) Funeral March" will become "(Gotterdammerung) Funeral March".

NOTE: These options may be selected or unselected.

4.4.5 Logging Tab

In the preferences dialog box, select the Logging tab as shown in figure 4.12.



Figure 4.12 – Preferences Dialog Box – Logging Tab

- **Log all metadata** - When checked, this creates a text log file in the client folder detailing all metadata lookups for the entire batch. Please use this for debug purposes only when requested by MF Digital Staff.
- **Log cddbinfo.txt** – When ripping for a DigiFi server use this option. This file is required when loading an album to a DigiFi server.

- **Log batch summary** - When checked, this creates a text log file in the client folder detailing failed/rejected CDs and successfully ripped CD's in order they were ripped.
- **Log genre in folder.dat** – this will place a folder.dat file in the album folder which contains the genre of the disc. As an example the contents of the file would look like "genre=latin".
- **View provider log** - Click this to display a running total of metadata lookups broken down by month and by provider.
- **E-mail alerts** – In this section enter in the details for your email account and you will receive email alerts connected with your batch when any error condition occurs

4.4.6 Ripping Tab

In the preferences dialog box, select the Ripping tab as shown in figure 4.13.

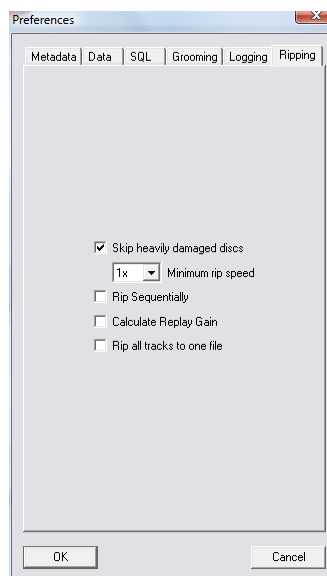


Figure 4.13 – Preferences Dialog Box – Ripping Tab


- **Skip Heavily Damaged Discs** - This allows the software to skip discs that are badly damaged and or unreadable. This will allow ripping to continue without, the software continually trying to read the disc and slowing down the process. The software will reject a disc if it rips below a ripping speed of 5x over a sustained period of time, using the drop down box you can lower this default threshold to a ripping speed of 1x.
- **Rip Sequentially** – This option enables the software to load, rip and eject discs in a sequential order.

- **Calculate Replay Gain** – This will switch on the option to calculate the replay gain value and embed it in the file.
- **Rip all tracks to one file** – This will rip all tracks on the disc to a single file and will also write out a cue file for the ripped track.

NOTE: These options may be selected or unselected.

4.5 Starting a New Batch

4.5.1 Batch Setup

In the main Ripstation screen, click the 'New Batch' button  and the Start a New Batch dialog box shown in figure 4.14 appears.

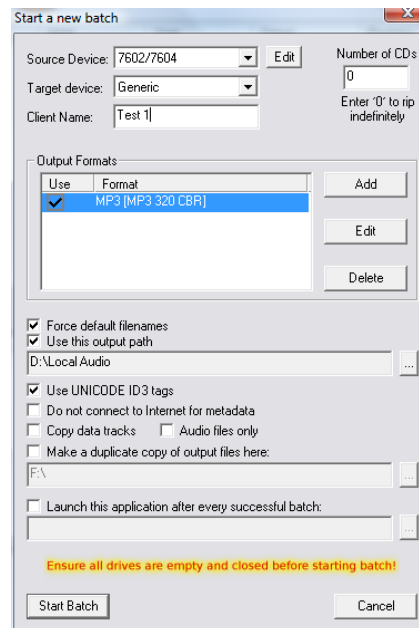


Figure 4.14– Batch Properties Dialog Box

- **Source Device** – select the model of robotic device you are using, or IDE/USB Drives to use internal or external CD/DVD Rom drives with no robotics.
- **Edit** – additional edits can be made such as COM port, Shake mode (on/off) and for MFD 7602/7604 devices, the option to select which side the drives are on. Shake mode was introduced to address sticking discs being double loaded into drive tray. It is not supported by the 7601 robotic loader.

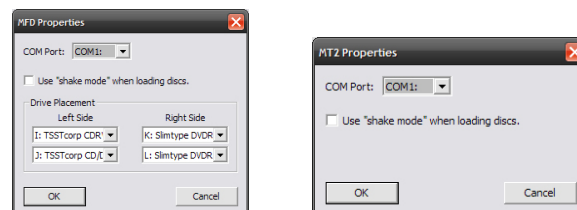


Figure 4.15 – Source Device Edit Dialog Box

- **Number of CDs** - key in the number of CDs in the batch, or 0 to rip indefinitely.
- **Target device** – Use Generic for any portable devices, or select from the manufacturer list to enable file format and grooming. Added direct support for Vantage Media servers with cddbinfo.txt file output.

- **Client Name** - Key in the client name (required) and a folder will be created of the same name inside the default output path folder where all encoded audio files will be placed.
- **Output Formats** – Displays the CODECs to be used for ripping. To enable a CODEC to be used, highlight (by the blue bar) the CODEC in the display and check the 'Use' tick box on the left.
- **[ADD]** Click Add to add an output codec to the output list.
- **[EDIT]** Click Edit to edit this Codec's settings. This will open a dialog in order to configure the codec settings including bit rates and VBR/CBR options (see section 4.5.2).
- **[DELETE]** Click Delete to remove the codec from the output list. Only codecs that are checked will be used.
- **Force default filenames** should only be checked if multiple formats are being encoded to. This will prefix the codec name above the album name – e.g. C:\Root\clientname\MP3\
- **Use this output path** - when checked will force the program to use this path as the root location for all files and will override the setting within each codec.
- **Unicode ID3 tags** is defaulted to 'on' as standard.
- **Copy Data Tracks** - Copy data tracks option introduced to copy data CDs as part of the batch process.
- **Audiofiles only** - Audio files only option filters out non-audio files by only copying the following:
 - *.mp3
 - *.wav
 - *.flac
 - *.aac
 - *.wma
- **Make a duplicate copy of output files here** – This will place a copy of the ripped files to the specified location
- **Launch this application after every successful batch** – This allows the user to select an application that will be launched by Ripstation after every successful batch that is completed.
- **[Start Batch]** closes this screen and starts the batch process.

NOTE: Codec and path settings will be stored from session to session, for a quick batch simply key in number of CDs and check the codec.

4.5.2 Codec Settings

Ripstation v4.4 ships with a number of standard CODEC options pre-configured. However CODECs may be added or deleted and the settings for the MP3, WMA, AAC and OGG CODECs may be modified.

- To add a new codec, click the **[Add]** button in the Batch Properties dialog box. The New Output dialog will appear as in figure 4.16

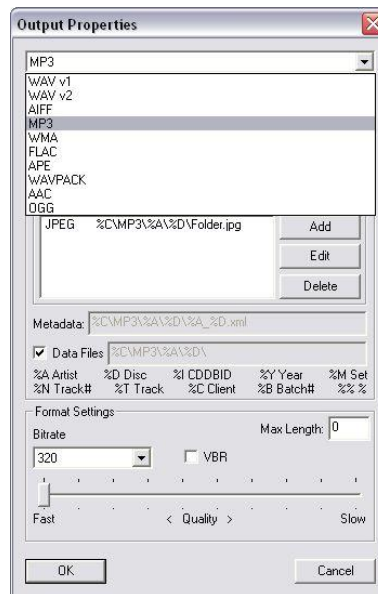


Figure 4.16– New Output Dialog

- Choose the CODEC you wish to add to the display from the drop down box at the top and press OK.
- In the same way, if you would like to delete a CODEC from the display, select the CODEC to be removed (highlighted by the blue bar) and press **[Delete]**.
- To modify a CODEC's settings, select the codec you wish to modify and click the **[Edit]** button. For the MP3 CODEC, the box in figure 4.17 appears.

List of variables used in the output paths:

```
%A AlbumArtistName
%B BatchClientUID
%C BatchClientName
%D AlbumName
%E AlbumCreditName (If CreditTitle is "Narrator")
%F AlbumCreditName (If CreditTitle is "Co-Author")
%G TrackArtistName
%H ISRC
%I CDDbID
%J Date in YYYYMMDD format
%K Genre
%M AlbumDiscNumber (if nonzero)
%N TrackNumber
%P FirstReleaseLabel
%Q AMG ID
%S FirstReleaseISBN
%T TrackName
%U FirstReleaseUPC
%V AlbumDiscNumber
```

%W AlbumDiscCount
 %X BatchIndex
 %Y AlbumDate
 0-9 BatchUserData (0-9)

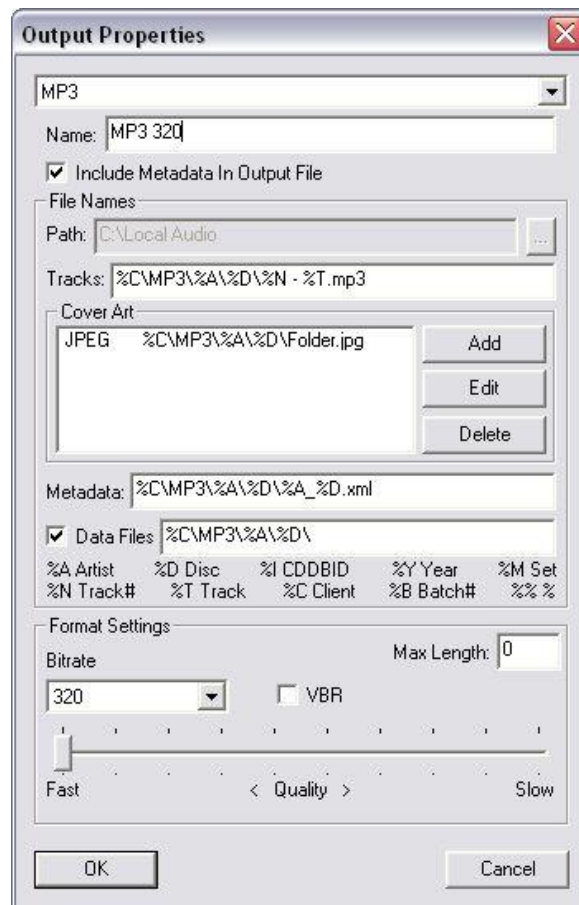


Figure 4.17- MP3 CODEC Settings

- **Include Metadata In Output files** – If this is checked Ripstation will write out and embed metadata in the file. If this is unchecked no metadata will be written into the output.
- **Path** - This represents the path the codec's output will use as a root folder. This may be overridden however in the batch properties screen (figure 4.14) by checking the 'Use this output path' option.
- **Tracks** - This is the full track path and name under the root folder. These settings are configured for each codec and MF Digital recommends that the same convention be used for all.
- **Cover art** – The location and name used for cover art. The recommended setting is set to album folder and named folder.jpg for maximum compatibility.

- **Metadata** – If log all metadata is selected this will be the pathway for the location of the xml file which is written out for this option. The user has the ability to customise the xml file path and name.
- **Data Files** – If this is selected any compatible data files will be written out to this location.
- **Max Length** – This gives the user the ability to create clips of the tracks. The duration of the track is written into this box as seconds. For example if the value of 30 is entered in the box then Ripstation will rip a 30 second clip of each track on the disc.

NOTE : Each server as selected in the drop down box in the main batch screen will dynamically set its own cover art and path naming convention and will highlight the available codec types.

- **Quality slider (L.A.M.E. MP3 & Windows Media VBR codecs only)** - The quality slider determines how rigorous the codec will be during the audio encoding phase. Higher quality settings will slow down the encoding process very slightly. Challenging audio, for example classical music or heavy metal, generally requires that the slider be moved toward the **Slow** setting.

The resulting increase in quality is somewhat subjective; a slower speed, higher quality setting of the quality slider is generally only recommended for challenging and very dynamic audio, with playback on high end audio equipment. For the vast majority of MP3 encoding with playback on low to mid-range audio equipment and portable music players, the default setting (shown above) is recommended.

4.5.3 Operations During Batch Rip

4.5.3.1 Operations without Robotic Autoloader

- At the start of a batch process, all selected drives will eject. Place CDs in the drives and click 'close all drives'. The batch process will now progress.
- As each CD is completed, it will be ejected. Replace with another when ready.

At the end of the batch the screen in figure 4.18 will be presented.

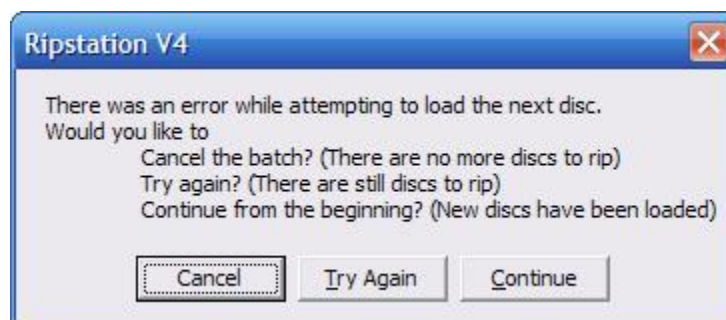


Figure 4.18 – Batch Complete Dialog

When Ripstation can find no more discs to load, the user is now presented with 3 options:

- Cancel the batch (No more discs to rip)
This will end the batch after any discs still being ripped have finished ripping. All drives will now be closed.
- Try again (There are still discs to rip)
This will instruct the bot to retry the last attempted spindle. The bot will not retry a spindle which has been used as an output spindle.
- Continue from beginning (New discs have been loaded)
This continues the current batch, and will restart from the first spindle.

4.5.3.2 Operations with Robotic Autoloader (MFD & Pro Series)

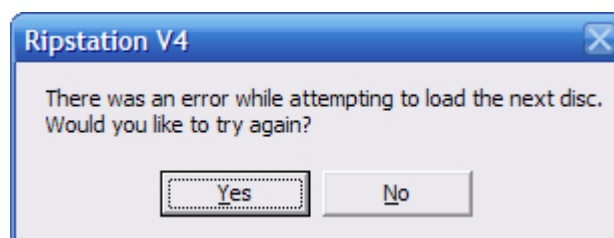
- Before clicking the Start Batch button, load the input spindle with CDs. At the start of the batch process, each drive on the MFD series will open and will be checked for the presence of a CD – in the case of none found, the drive will be loaded with a CD from the input spindle, closed and read. This step is followed for each CD in turn.

When each CD is completed it is collected and either placed on the 'Accept' spindle as a good CD or the small 'Reject' pile as a failed CD.

- At the end of the batch, the dialog box shown in figure 4.18 will appear, either click the 'No, I'm Done!' button to complete the process or add more CDs to the spindle, key in the number and press the 'Yes, Add More!' button, at which point ripping will recommence.

4.5.3.3 Reported errors

If the robotic autoloader experiences a problem collecting a CD during a batch rip, one of two error dialog boxes will appear. These dialog boxes are shown in figure 4.19a & b.

**Figure 4.19a – Error While Accepting Dialog Box**

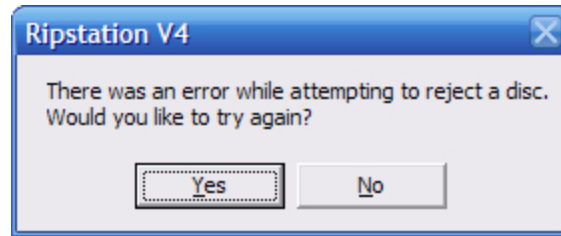


Figure 4.19b – Error While Rejecting Dialog Box

Figure 4.18a displays the error while accepting dialog box which occurs when the robotic autoloader experiences a problem while trying to collect a CD from the input spindle.

- When this occurs either click 'yes' to allow the autoloader to retry the collection or click 'no' and remove the CD from the stack.

Figure 4.18b shows the error while rejecting dialog box which occurs when the robotic autoloader experiences a problem while trying to collect a CD from the drive.

- When this occurs either click yes to allow the autoloader to retry the collection or click no and remove the CD from the drive manually.

4.6 Actions for Completed Batch

4.6.1 Podload button (load an iPod)



When you click the Podload button it opens iTunes and adds the rip files to the library. Then the user can add the music files to the iPod using the iTunes interface.

4.6.2 Loading an external Hard Drive



Clicking the 'Send to HD' button loads the client folder to a hard drive. The standard Windows explorer dialog appears.

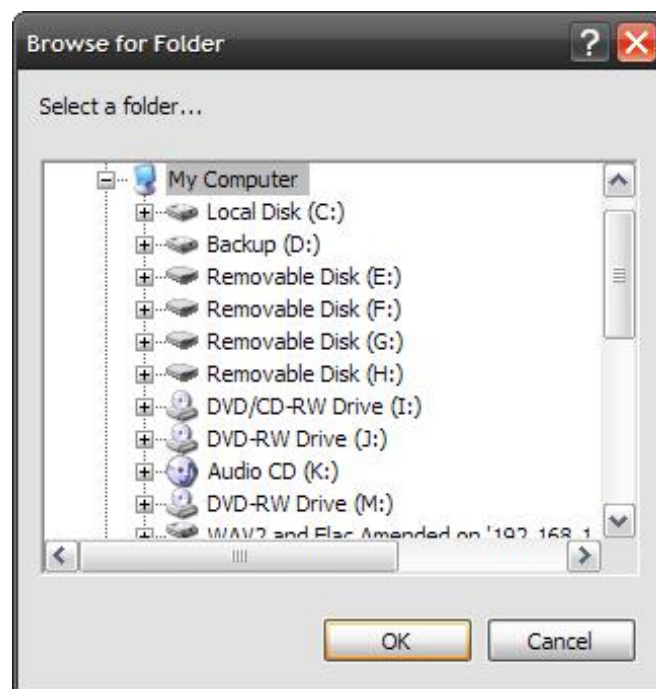


Figure 4.26 – Selecting a folder to load to Hard Drive (HD)

- Select the Location of the external USB hard drive unit, network hard drive or USB device and click OK.

The files will then be loaded to the device chosen and the file copy dialog appears to show its progress.

4.7 Error detection & correction

Ripstation's error handling consists of:

- Auto C2 Check
- Burst mode check
- Jitter check

4.8 Output Reports

In addition to the live logging window, Ripstation generates a key report automatically at the end of a batch as follows:

A flat text file detailing the following, saved into the client folder.

(Clientname_log).txt

```
Ripstation v4.4
Client: Test1  UID: 29378975
MP3: 224 kbps CBR
```

```
Started: 07/29/2009 11:25
```

```
A total of:
16 albums were ripped
2 albums were not ripped
0 albums had no cover
0 albums had no data
```

```
Albums Not Ripped
```

```
-----
Pet Shop Boys - Discography
```

The clientname_log.txt file will be appended to for batches with the same client name, so they will not be overwritten. The log window shows a running transaction trail of all functions of each part of the process detailing and time stamping each error for trapping and monitoring purposes. Another feature is real-time writing of the log window to a log file in the batch output folder called "log.txt".

5.0 Integration with Other Ripstation Products

Audiofile may be added to Ripstation as an additional module to support automatic generation of the client output catalogue in PDF or HTML.

Ripstation AudioFile

Generates fully customisable and printable HTML album catalogue using cover art and customisable logo and colours

Please contact Ripstation for further information, or visit

www.ripstation.com

6.0 Help and Support

Support terms are detailed in client specific contracts, but at minimum shall include 24 hour support via our online helpdesk. In addition we offer an extended warranty package which includes remote access to your site from our headquarters and extended hardware warranty coverage.

Support response is guaranteed within 24 hours.

Contact details:

Ripstation
A Division of Formats Unlimited, Inc
155 Sherwood Avenue
Farmingdale, NY 11735

US Support:
T: +1 631 249 9393
F: +1 631 249 9273

EU Support:
T: +44 2890 022342

Email: support@ripstation.com
Support Helpdesk: www.ripstation.com/support

7.0 Upgrades

Ripstation 4.4 includes an autoupdate push client. This client will sit in your system tray and poll our servers for the latest updates. When an update is found, it will notify you with a pop up message and allow you to ignore or download the upgrade.