

Generating a PRN file for Prism PLUS printer.

(Prism Plus Driver Must Be Installed On The PC That is Being Used To Generate The PRN File)

- 1) Open up CD Designer software.
- 2) Create a design. You should save all projects as a CD designer file for future implementation. Go to File => Save As... type in a file name.

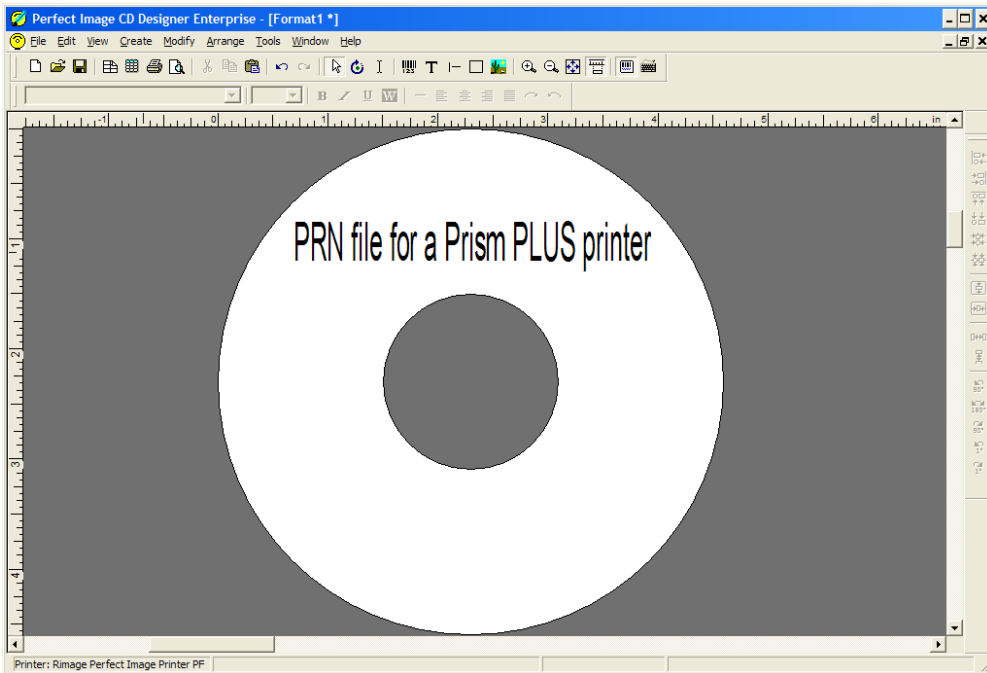


fig.1 CD Designer software.

- 3) To generate a PRN file go to File => Print...
- 4) Highlight the Rimage Perfect Image Printer PF as shown on fig.2

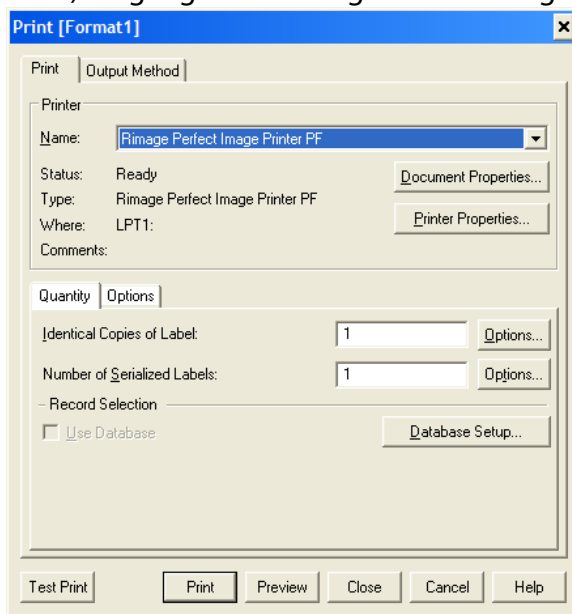


fig.2 Select the Prism PLUS printer

5) Go to Option tab then check the Print to File box then press Print button as shown on a fig.3

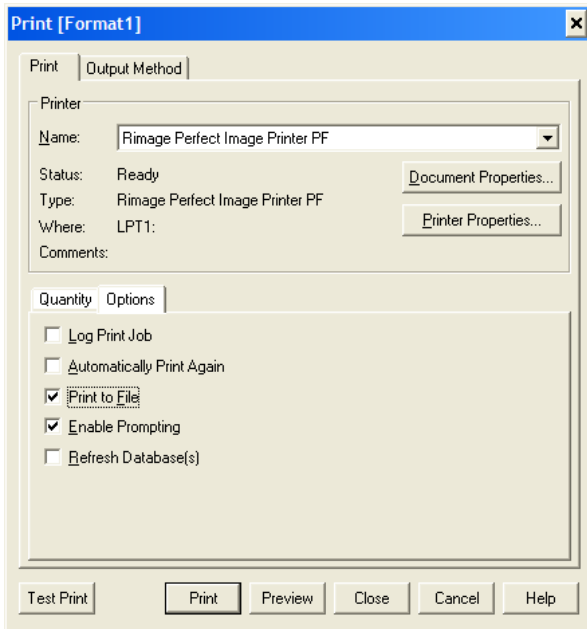


fig. 3 Check the Print to file box under Options tab.

6) Click OK to generate Print to File Dialog box. Fig 4

Type the name* and location of the output PRN file. You MUST use the .PRN extension to successfully generate a PRN file. Fig 4

*** Note - To submit the .prn, The file must be named 1.prn for Scribe SA and Scribe EC Standalone units.**

When using Relay Mode, Simply name the print files 1.prn, 2.prn, 3.prn etc. to correspond to your masters.

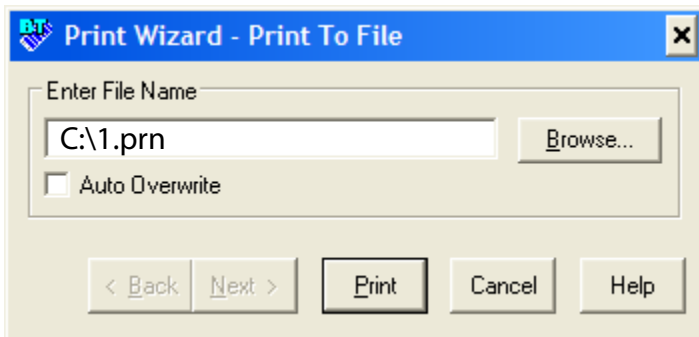


fig. 4 Naming and saving a PRN file.

7) You have successfully generated a PRN file.