

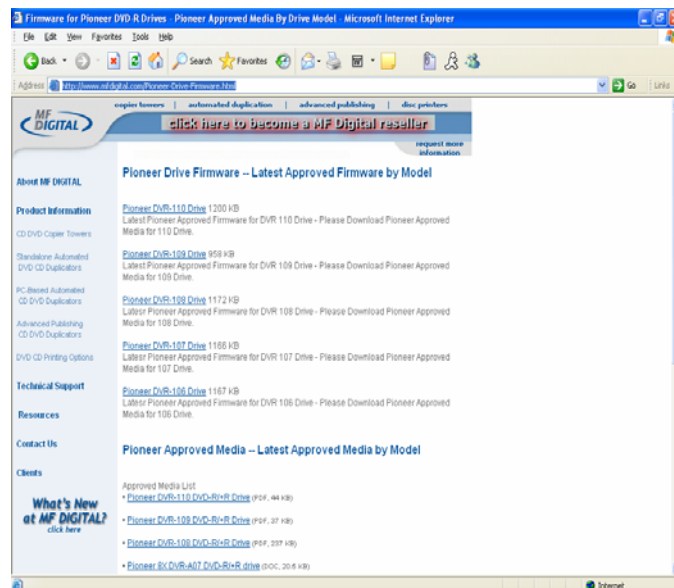
How to upgrade the Pioneer Drive Firmware – All Models

Scribe PC & Director/Director Pro: Be sure to terminate all MF Digital Software prior to performing this procedure.

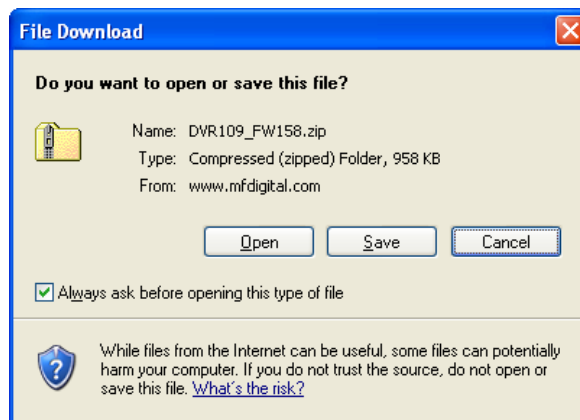
3000 & 5000 Series Users Only: Users will need to use a Monitor, Keyboard, and Mouse to perform the procedure below. Additionally, the Embedded Application will need to be disabled. Right click on your taskbar, choose Task Manager, then select the Processes Tab, scroll through the list, click on the Embedded.exe file and choose End Process. Then perform the procedure below. Once completed, reboot your system.

1. First download the latest drive firmware from MF Digital's Website.
<http://www.mfdigital.com/Pioneer-Drive-Firmware.html>

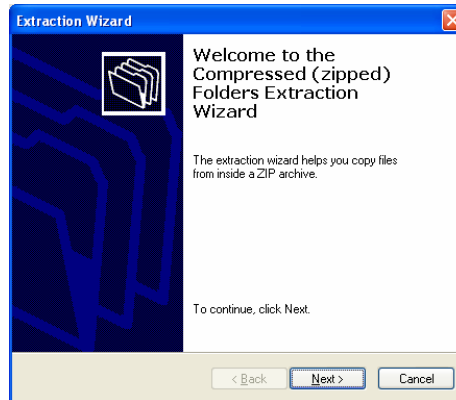
Please see the section below, *How to determine which Model Drive is installed and it's Revision Level* to determine which drives you have in your system.



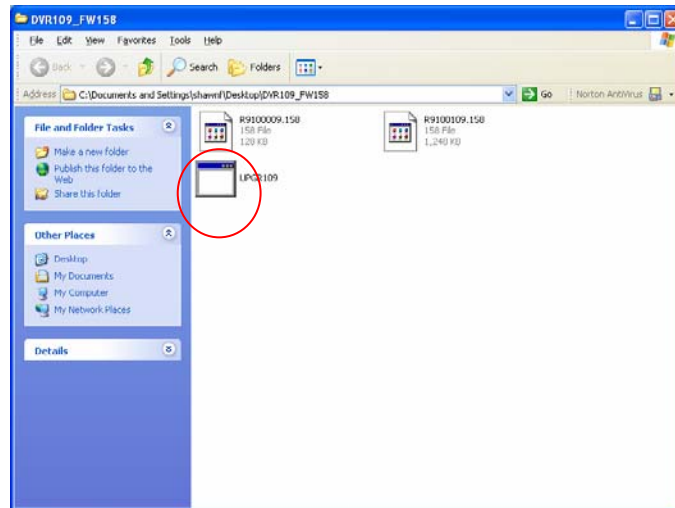
2. Click the link that corresponds to the drives that are installed in your system. Choose SAVE and download the file to your Desktop.



The file is in ZIP format and will need to be extracted. You can use Windows XP extraction wizard if you do not have an extraction application by right clicking on the zip file and choosing EXTRACT ALL. You will get the Extraction Wizard Dialog as indicated to the right.



3. Once extracted, click the folder to open it. You will see the following files. For this example, these files are for the DVR-109 Drive.

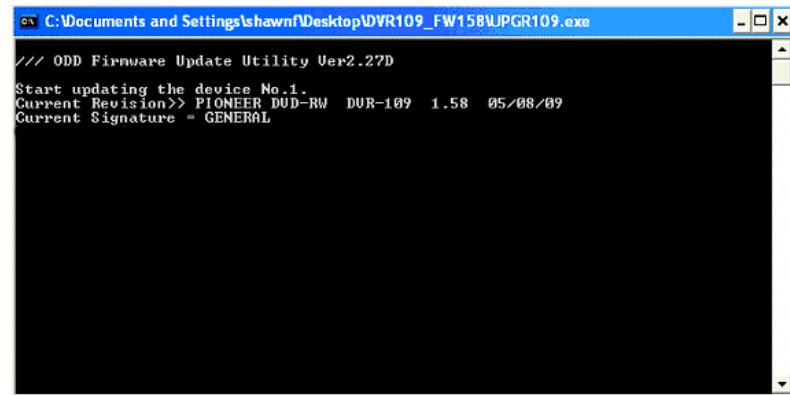


4. Double click on the batch file. The batch file's icon is blue and white. As indicated by the red circle in the above illustration. You will be prompted with the following dialog...click the RUN button.

Note: Be sure there are no discs in the drives prior to running this upgrade.



5. The following DOS window will appear, and you will receive a dialog indicating a number of target devices found. Click OK and this will start the firmware upgrade to your drives. This process will take a few minutes depending on the number of drives in your system.



```
/// ODD Firmware Update Utility Ver2.27D
Start updating the device No.1.
Current Revision>> PIONEER DUD-RW DUR-109 1.58 05/08/09
Current Signature = GENERAL
```

The batch file will update the Drive's Firmware for each drive found. **During this process it is IMPORTANT not to turn off the system as this will cause damage to the drives.**

6. When the flashing of the firmware is complete, a dialog indicating the operation has completed successfully will appear. You can now click the OK button and the DOS window will disappear.

7. If you choose, you can verify the Drive's Firmware has been updated by following the instructions in the next section.

How to determine which Model Drive is installed and it's Revision Level

9000 Series - Scribe PC users can go to the settings tab, click the Hardware Features, a dialog will display the Model of the drive and it's revision level.

3000 & 5000 Series – Standalone Users can determine the Firmware Revision Level by pressing #6 on the Keypad, and noting the revision level on the second line, left corner of the LCD display. The Model number is displayed on the top line.

Director and Director Pro Users – Click on the Resources Info Tab. The Model number is displayed for each drive installed. Note the numbers that follow after REV. This will indicate the current Drive Revision Level.